

ARG10109 anti-HLA G antibody [MEM-G/2]

Package: 100 µg
Store at: -20°C

Summary

Product Description	Mouse Monoclonal antibody [MEM-G/2] recognizes HLA G
Tested Reactivity	Hu
Tested Application	IHC-Fr, IHC-P, WB
Specificity	The clone MEM-G/2 recognizes the free heavy chain of all the HLA-G isoforms. HLA-G belongs to the MHC Class I molecules (MHC Class Ib; nonclassical) and it is expressed on the surface of trophoblast cells.
Host	Mouse
Clonality	Monoclonal
Clone	MEM-G/2
Isotype	IgG1
Target Name	HLA G
Immunogen	Bacterially expressed recombinant HLA-G heavy chain (denatured).
Conjugation	Un-conjugated
Alternate Names	HLA G antigen; MHC class I antigen G; HLA class I histocompatibility antigen, alpha chain G; MHC-G

Application Instructions

Application table	Application	Dilution
	IHC-Fr	Assay-dependent
	IHC-P	Assay-dependent
	WB	Assay-dependent
Application Note	* The dilutions indicate recommended starting dilutions and the optimal dilutions or concentrations should be determined by the scientist.	

Properties

Form	Liquid
Purification	Purified from ascites by hydrophobic charge induction chromatography.
Purity	> 95% (by SDS-PAGE)
Buffer	PBS (pH 7.4) and 15 mM Sodium azide
Preservative	15 mM Sodium azide
Concentration	1 mg/ml
Storage instruction	For continuous use, store undiluted antibody at 2-8°C for up to a week. For long-term storage, aliquot and store at -20°C or below. Storage in frost free freezers is not recommended. Avoid repeated freeze/thaw cycles. Suggest spin the vial prior to opening. The antibody solution should be gently mixed

before use.

Note

For laboratory research only, not for drug, diagnostic or other use.

Bioinformation

Database links

[GeneID: 3135 Human](#)

[Swiss-port # P17693 Human](#)

Gene Symbol

HLA-G

Gene Full Name

major histocompatibility complex, class I, G

Background

HLA-G belongs to the HLA class I heavy chain paralogues. This class I molecule is a heterodimer consisting of a heavy chain and a light chain (beta-2 microglobulin). The heavy chain is anchored in the membrane. HLA-G is expressed on fetal derived placental cells. The heavy chain is approximately 45 kDa and its gene contains 8 exons. Exon one encodes the leader peptide, exons 2 and 3 encode the alpha1 and alpha2 domain, which both bind the peptide, exon 4 encodes the alpha3 domain, exon 5 encodes the transmembrane region, and exon 6 encodes the cytoplasmic tail. [provided by RefSeq, Jul 2008]

Function

Involved in the presentation of foreign antigens to the immune system. Plays a role in maternal tolerance of the fetus by mediating protection from the deleterious effects of natural killer cells, cytotoxic T-lymphocytes, macrophages and mononuclear cells. [UniProt]

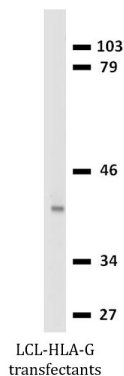
Research Area

Immune System antibody

Calculated Mw

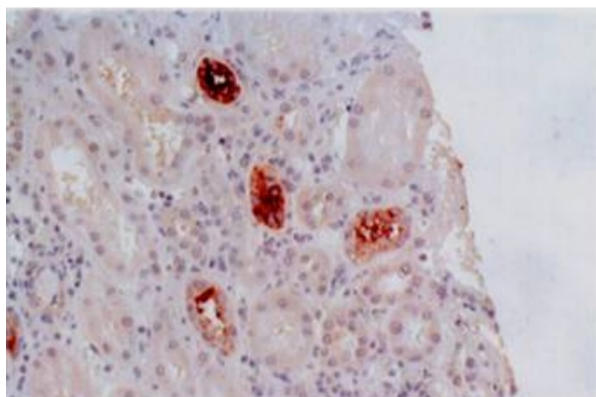
38 kDa

Images



ARG10109 anti-HLA G antibody [MEM-G/2] WB image

Western blot: LCL-HLA-G transfectants stained with ARG10109 anti-HLA G antibody [MEM-G/2].



ARG10109 anti-HLA G antibody [MEM-G/2] IHC-P image

Immunohistochemistry: Paraffin-embedded kidney allograft biopsy stained with ARG10109 anti-HLA G antibody [MEM-G/2].