

ARG10152 anti-Procalcitonin antibody [42]

Package: 100 µg, 50 µg
Store at: -20°C

Summary

Product Description	Mouse Monoclonal antibody [42] recognizes Procalcitonin
Tested Reactivity	Hu
Tested Application	ELISA, WB
Host	Mouse
Clonality	Monoclonal
Clone	42
Isotype	IgG2a
Target Name	Procalcitonin
Species	Human
Immunogen	Fragments of human PCT conjugated with carrier protein.
Conjugation	Un-conjugated
Alternate Names	CALC1; Calcitonin carboxyl-terminal peptide; CCP; PDN-21; CT

Application Instructions

Application Note	Sandwich ELISA: Recommended antibody pairs in sandwich immunoassay for procalcitonin (capture - detection): ARG10509 - ARG10152 * The dilutions indicate recommended starting dilutions and the optimal dilutions or concentrations should be determined by the scientist.
------------------	---

Properties

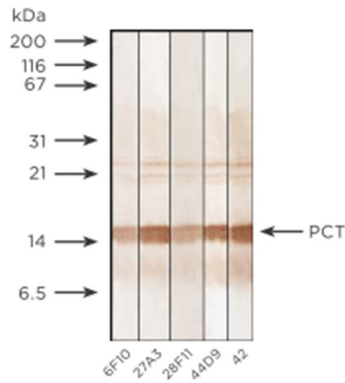
Form	Liquid
Purification	Protein A affinity purified.
Buffer	PBS (pH 7.4) and 0.1% Sodium azide
Preservative	0.1% Sodium azide
Concentration	1.0-2.0 mg/ml
Storage instruction	For continuous use, store undiluted antibody at 2-8°C for up to a week. For long-term storage, aliquot and store at -20°C or below. Storage in frost free freezers is not recommended. Avoid repeated freeze/thaw cycles. Suggest spin the vial prior to opening. The antibody solution should be gently mixed before use.
Note	For laboratory research only, not for drug, diagnostic or other use.

Bioinformation

Database links	GeneID: 796 Human
----------------	-----------------------------------

Gene Symbol	CALCA
Gene Full Name	Calcitonin
Background	This gene encodes the peptide hormones calcitonin, calcitonin gene-related peptide and katecalcine by tissue-specific alternative RNA splicing of the gene transcripts and cleavage of inactive precursor proteins. Calcitonin is involved in calcium regulation and acts to regulate phosphorus metabolism. Calcitonin gene-related peptide functions as a vasodilator and as an antimicrobial peptide while katecalcine is a calcium-lowering peptide. Multiple transcript variants encoding different isoforms have been found for this gene. [provided by RefSeq, Aug 2014]
Function	Calcitonin causes a rapid but short-lived drop in the level of calcium and phosphate in blood by promoting the incorporation of those ions in the bones. Katecalcine is a potent plasma calcium-lowering peptide. [UniProt]
Research Area	Cancer antibody; Cell Biology and Cellular Response antibody; Neuroscience antibody; Signaling Transduction antibody
Calculated Mw	14 kDa

Images



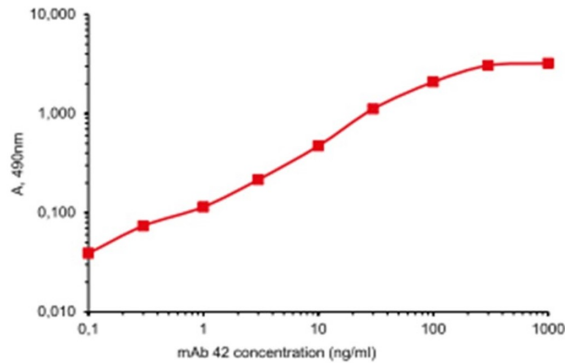
ARG10152 anti-Procalcitonin antibody [42] WB image

Western Blot: 100ng/lane Human recombinant procalcitonin stained with 1) ARG10165 anti-Procalcitonin antibody [6F10]; 2) ARG10436 anti-Procalcitonin antibody [27A3]; 3) ARG10136 anti-Procalcitonin antibody [38F11]; 4) ARG10118 anti-Procalcitonin antibody [44D9]; 5) ARG10152 anti-Procalcitonin antibody [42].



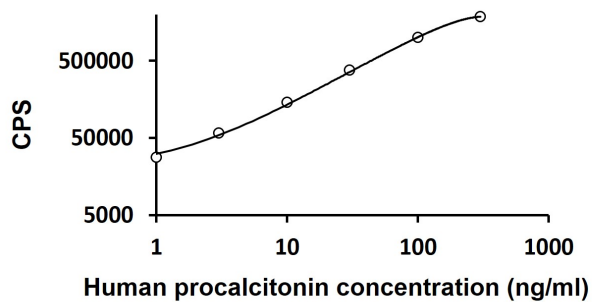
ARG10152 anti-Procalcitonin antibody [42] Immunogen location image

The epitope of ARG10152 anti-Procalcitonin antibody [42] is located at a.a. 21-40 of Procalcitonin.



ARG10152 anti-Procalcitonin antibody [42] ELISA image

ELISA: Titration curve of ARG10152 in direct ELISA with N-terminal PCT conjugated with BSA - 0.02 µg/well.



ARG10152 anti-Procalcitonin antibody [42] sELISA image

Sandwich ELISA: Calibration curves for MAb combinations clone 16B5 - 42. The immunoassay was pre-coated with 1 µg/well of [ARG10152](#) anti-Procalcitonin antibody [42] as the capture antibody. Recombinant human procalcitonin was added to the wells and incubated for 30 min at RT. After wash away unbonded reagents. A Eu3+-labeled detection antibody, [ARG10509](#) anti-Calcitonin antibody [16B5] (0.1 µg/wel) was added and incubated.