

ARG10351 anti-MUC16 / CA125 antibody [X325]

Package: 100 µg, 50 µg
Store at: -20°C

Summary

Product Description	Mouse Monoclonal antibody [X325] recognizes MUC16 / CA125
Tested Reactivity	Hu
Tested Application	ELISA, IHC-P, WB
Host	Mouse
Clonality	Monoclonal
Clone	X325
Isotype	IgG1
Target Name	MUC16 / CA125
Species	Human
Immunogen	MUC16 / CA125 antigen purified from human ovarian carcinoma
Conjugation	Un-conjugated
Alternate Names	Mucin-16; MUC-16; Ovarian carcinoma antigen CA125; CA125; Ovarian cancer-related tumor marker CA125; CA-125

Application Instructions

Application table	Application	Dilution
	ELISA	Assay-dependent
	IHC-P	Assay-dependent
	WB	1:300
Application Note	Sandwich ELISA (Capture antibody - Detection antibody): ARG10156 - ARG10351 ARG10351 - ARG10156 ARG10534 - ARG10351 * The dilutions indicate recommended starting dilutions and the optimal dilutions or concentrations should be determined by the scientist.	

Properties

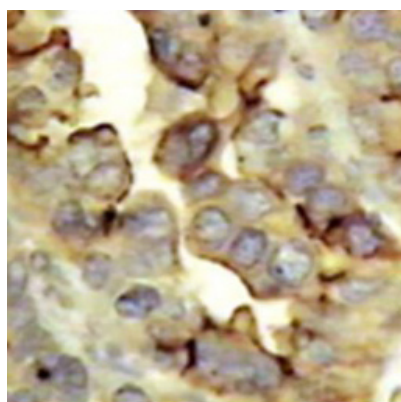
Form	Liquid
Purification	Ion exchange chromatography.
Buffer	10 mM Tris (pH 7.5), 0.15 M NaCl and 0.05% Sodium azide
Preservative	0.05% Sodium azide
Concentration	1.0-2.0 mg/ml

Storage instruction	For continuous use, store undiluted antibody at 2-8°C for up to a week. For long-term storage, aliquot and store at -20°C or below. Storage in frost free freezers is not recommended. Avoid repeated freeze/thaw cycles. Suggest spin the vial prior to opening. The antibody solution should be gently mixed before use.
Note	For laboratory research only, not for drug, diagnostic or other use.

Bioinformation

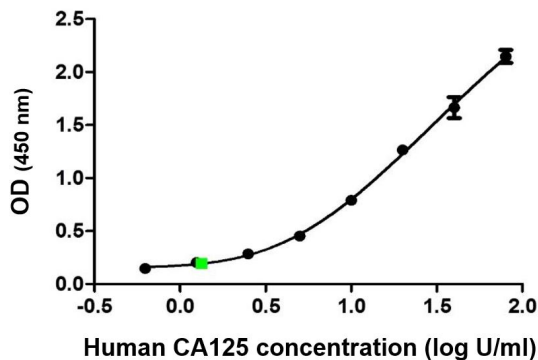
Database links	GeneID: 94025 Human Swiss-port # Q8WXI7 Human
Gene Symbol	MUC16
Gene Full Name	muin 16, cell surface associated
Background	CA125 is a tumor antigen widely used in monitoring ovarian cancer. Using a rabbit polyclonal antibody produced to purified CA125 antigen to screen cells from an ovarian cancer cell (OVCAR-3) cDNA library in E. coli, Yin and Lloyd (2001) cloned a long partial cDNA, which they designated MUC16, corresponding to the CA125 antigen. The deduced 1,890-amino acid protein contains characteristic features of a mucin-type molecule, including a high serine, threonine, and proline content in an N-terminal region of 9 partially conserved tandem repeats and a C-terminal region nontandem repeat sequence containing a possible transmembrane region and a potential tyrosine phosphorylation site. MUC16 also has a high leucine content. Northern blot analysis showed that the level of MUC16 mRNA correlated with the expression of CA125 in a panel of cell lines. [Provide by OMIN]
Function	Thought to provide a protective, lubricating barrier against particles and infectious agents at mucosal surfaces. [UniProt]
Research Area	Cancer antibody; Controls and Markers antibody; Signaling Transduction antibody
Calculated Mw	1519 kDa
PTM	Heavily O-glycosylated; expresses both type 1 and type 2 core glycans. Heavily N-glycosylated; expresses primarily high mannose and complex bisecting type N-linked glycans. May be phosphorylated. Phosphorylation of the intracellular C-terminal domain may induce proteolytic cleavage and the liberation of the extracellular domain into the extracellular space. May contain numerous disulfide bridges. Association of several molecules of the secreted form may occur through interchain disulfide bridges providing an extraordinarily large gel-like matrix in the extracellular space or in the lumen of secretory ducts.

Images



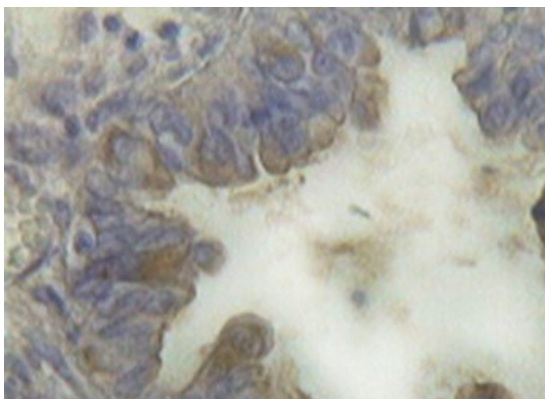
ARG10351 anti-MUC16 / CA125 antibody [X325] IHC-P image

Immunohistochemistry: Paraffin-embedded Human lung adenocarcinoma tissue stained with ARG10351 anti-MUC16 / CA125 antibody [X325].



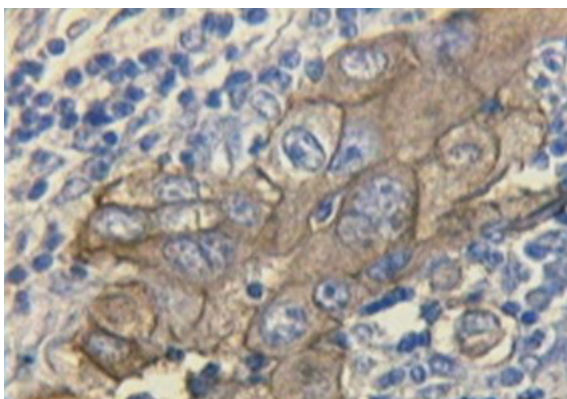
ARG10351 anti-MUC16 / CA125 antibody [X325] standard curve image

ELISA: Analysis of Human CA125 expression using [ARG10156](#) anti-MUC16 / CA125 antibody [X75] as a capture antibody and biotinylated ARG10351 anti-MUC16 / CA125 antibody [X325] as a detection antibody with purified Human CA125 as antigen to generate the standard curve. Detection is by HRP conjugated streptavidin and substrate. Plasma (green) sample at 1:2 is shown.



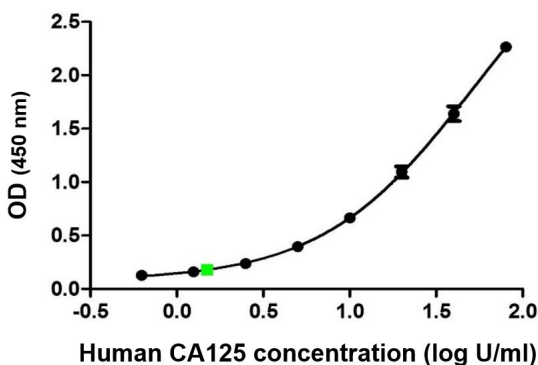
ARG10351 anti-MUC16 / CA125 antibody [X325] IHC-P image

Immunohistochemistry: Paraffin-embedded Human serosal ovarian adenocarcinoma tissue stained with ARG10351 anti-MUC16 / CA125 antibody [X325].



ARG10351 anti-MUC16 / CA125 antibody [X325] IHC-P image

Immunohistochemistry: Paraffin-embedded Human urinary bladder adenocarcinoma tissue stained with ARG10351 anti-MUC16 / CA125 antibody [X325].



ARG10351 anti-MUC16 / CA125 antibody [X325] standard curve image

ELISA: Analysis of Human CA125 expression using ARG10351 anti-MUC16 / CA125 antibody [X325] as a capture antibody and biotinylated [ARG10156](#) anti-MUC16 / CA125 antibody [X75] as a detection antibody with purified Human CA125 as antigen to generate the standard curve. Detection is by HRP conjugated streptavidin and substrate. Plasma (green) sample at 1:2 is shown.