

## ARG10406 anti-NT-proBNP antibody [11D1]

Package: 200 µg  
Store at: -20°C

### Summary

Product Description	Mouse Monoclonal antibody [11D1] recognizes NT-proBNP
Tested Reactivity	Hu
Tested Application	WB
Host	Mouse
Clonality	Monoclonal
Clone	11D1
Isotype	IgG1
Target Name	NT-proBNP
Species	Human
Immunogen	Synthetic N-terminal pro brain natriuretic peptide (NT-proBNP), corresponding to aa. 28-45
Conjugation	Un-conjugated
Alternate Names	4-27; Natriuretic peptides B; 1-28; 1-29; 5-32; BNP; 1-32; 1-30; BNP-32; 5-29; 2-31; 4-30; 4-31; 4-32; 3-29; Gamma-brain natriuretic peptide; 3-30; 5-31; 3-32; 4-29

### Application Instructions

Application Note	* The dilutions indicate recommended starting dilutions and the optimal dilutions or concentrations should be determined by the scientist.
------------------	--

### Properties

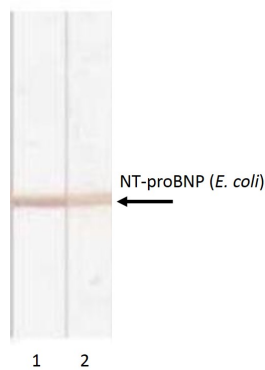
Form	Liquid
Purification	Protein A affinity purified.
Buffer	PBS (pH 7.4) and 0.1% Sodium azide
Preservative	0.1% Sodium azide
Concentration	1.0-2.0 mg/ml
Storage instruction	For continuous use, store undiluted antibody at 2-8°C for up to a week. For long-term storage, aliquot and store at -20°C or below. Storage in frost free freezers is not recommended. Avoid repeated freeze/thaw cycles. Suggest spin the vial prior to opening. The antibody solution should be gently mixed before use.
Note	For laboratory research only, not for drug, diagnostic or other use.

### Bioinformation

Database links	<a href="#">GeneID: 4879 Human</a>
----------------	------------------------------------

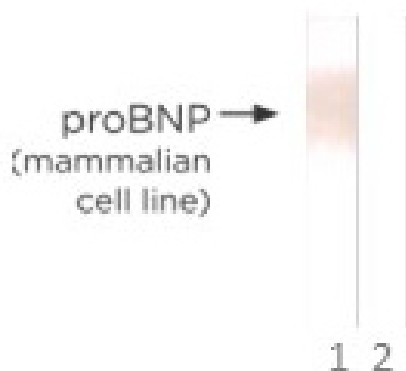
Gene Symbol	NPPB
Gene Full Name	natriuretic peptide B
Background	This gene is a member of the natriuretic peptide family and encodes a secreted protein which functions as a cardiac hormone. The protein undergoes two cleavage events, one within the cell and a second after secretion into the blood. The protein's biological actions include natriuresis, diuresis, vasorelaxation, inhibition of renin and aldosterone secretion, and a key role in cardiovascular homeostasis. A high concentration of this protein in the bloodstream is indicative of heart failure. The protein also acts as an antimicrobial peptide with antibacterial and antifungal activity. Mutations in this gene have been associated with postmenopausal osteoporosis. [provided by RefSeq, Nov 2014]
Function	Cardiac hormone which may function as a paracrine antifibrotic factor in the heart. Also plays a key role in cardiovascular homeostasis through natriuresis, diuresis, vasorelaxation, and inhibition of renin and aldosterone secretion. Specifically binds and stimulates the cGMP production of the NPR1 receptor. Binds the clearance receptor NPR3. [UniProt]
Research Area	Cell Biology and Cellular Response antibody; Signaling Transduction antibody
Calculated Mw	15 kDa
PTM	The brain natriuretic peptide 32 form is cleaved at Pro-104 by the prolyl endopeptidase FAP (seprase) activity (in vitro).

## Images



ARG10406 anti-NT-proBNP antibody [11D1] WB image

Western blot: Human recombinant NT-proBNP expressed in *E. coli* stained with 1) [ARG10408](#) anti-NT-proBNP antibody [15F11] and 2) ARG10406 anti-NT-proBNP antibody [11D1], after Tricine-SDS gel electrophoresis.



ARG10406 anti-NT-proBNP antibody [11D1] WB image

Western blot: Human recombinant proBNP expressed in mammalian cells stained with 1) [ARG10408](#) anti-NT-proBNP antibody [15F11] and 2) ARG10406 anti-NT-proBNP antibody [11D1], after Tricine-SDS gel electrophoresis. ARG10406 does not recognize glycosylated proBNP expressed in the mammalian cell line.