

## ARG10521 anti-IL6 antibody [1B6]

Package: 100 µg  
Store at: -20°C

### Summary

Product Description	Mouse Monoclonal antibody [1B6] recognizes IL6
Tested Reactivity	Hu
Tested Application	ELISA, FACS, WB
Host	Mouse
Clonality	Monoclonal
Clone	1B6
Isotype	IgG1, kappa
Target Name	IL6
Species	Human
Immunogen	Purified recombinant Human IL-6 (NP_000591.1)
Conjugation	Un-conjugated
Alternate Names	B-cell stimulatory factor 2; CDF; HSF; BSF-2; Interferon beta-2; IL-6; IFNB2; CTL differentiation factor; Interleukin-6; HGF; Hybridoma growth factor; BSF2; IFN-beta-2

### Application Instructions

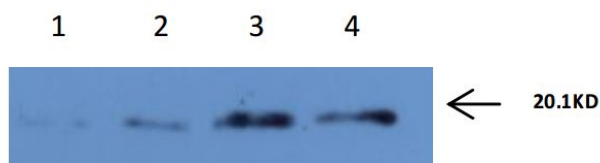
Application table	Application	Dilution
	ELISA	Assay-dependent
	FACS	10 µg/ml
	WB	200 ng/ml, can recognize 25ng/lane antigen
Application Note	* The dilutions indicate recommended starting dilutions and the optimal dilutions or concentrations should be determined by the scientist.	

### Properties

Form	Liquid
Purification	Purification with Protein G.
Buffer	0.01M PBS (pH 7.0)
Storage instruction	For continuous use, store undiluted antibody at 2-8°C for up to a week. For long-term storage, aliquot and store at -20°C or below. Storage in frost free freezers is not recommended. Avoid repeated freeze/thaw cycles. Suggest spin the vial prior to opening. The antibody solution should be gently mixed before use.
Note	For laboratory research only, not for drug, diagnostic or other use.

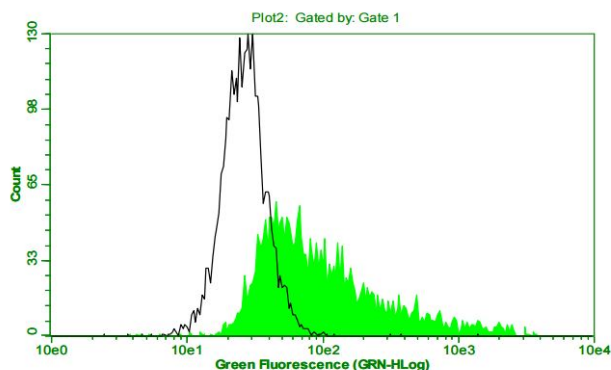
Database links	<a href="#">GeneID: 3569 Human</a> <a href="#">Swiss-port # P05231 Human</a>
Gene Symbol	IL6
Gene Full Name	interleukin 6
Background	<p>This gene encodes a cytokine that functions in inflammation and the maturation of B cells. In addition, the encoded protein has been shown to be an endogenous pyrogen capable of inducing fever in people with autoimmune diseases or infections. The protein is primarily produced at sites of acute and chronic inflammation, where it is secreted into the serum and induces a transcriptional inflammatory response through interleukin 6 receptor, alpha. The functioning of this gene is implicated in a wide variety of inflammation-associated disease states, including susceptibility to diabetes mellitus and systemic juvenile rheumatoid arthritis. [provided by RefSeq, Jun 2011]</p>
Function	<p>Cytokine with a wide variety of biological functions. It is a potent inducer of the acute phase response. Plays an essential role in the final differentiation of B-cells into Ig-secreting cells Involved in lymphocyte and monocyte differentiation. Acts on B-cells, T-cells, hepatocytes, hematopoietic progenitor cells and cells of the CNS. Required for the generation of T(H)17 cells. Also acts as a myokine. It is discharged into the bloodstream after muscle contraction and acts to increase the breakdown of fats and to improve insulin resistance. It induces myeloma and plasmacytoma growth and induces nerve cells differentiation. [UniProt]</p>
Highlight	<p>Related products:  <a href="#">IL6 antibodies</a>; <a href="#">IL6 ELISA Kits</a>; <a href="#">IL6 recombinant proteins</a>; <a href="#">Anti-Mouse IgG secondary antibodies</a>;            Related news:  <a href="#">HMGB1 in inflammation</a>  <a href="#">Inflammatory Cytokines</a></p>
Research Area	Cancer antibody; Immune System antibody; Metabolism antibody; Neuroscience antibody
Calculated Mw	24 kDa
PTM	N- and O-glycosylated.

## Images



ARG10521 anti-IL6 antibody [1B6] WB image

Western blot: (Lane 1, 2) 25 ng of recombinant human IL-6 and (Lane 3, 4) 50 ng of recombinant human IL-6 stained with ARG10521 anti-IL6 antibody [1B6] at 200 ng/ml dilution.



ARG10521 anti-IL6 antibody [1B6] FACS image

Flow Cytometry: IL-6 transfected 293T cells stained with ARG10521 anti-IL6 antibody [1B6] at 10 ug/ml dilution. Black line: stained with isotype control.