

ARG10554 anti-B Raf antibody [G11-G]

Package: 50 µl
Store at: -20°C

Summary

Product Description	Rabbit Monoclonal antibody [G11-G] recognizes B Raf
Tested Reactivity	Hu, Ms, Rat
Tested Application	IHC-P
Host	Rabbit
Clonality	Monoclonal
Clone	G11-G
Isotype	IgG
Target Name	B Raf
Species	Human
Immunogen	Synthetic peptide around Val600 of Human B-raf. (corresponds to Val637 of Mouse or Rat B-raf).
Conjugation	Un-conjugated
Alternate Names	BRAF1; v-Raf murine sarcoma viral oncogene homolog B1; Proto-oncogene B-Raf; p94; Serine/threonine-protein kinase B-raf; RAFB1; EC 2.7.11.1; B-RAF1; NS7

Application Instructions

Application table	Application	Dilution
	IHC-P	1:100 - 1:200
Application Note	* The dilutions indicate recommended starting dilutions and the optimal dilutions or concentrations should be determined by the scientist.	

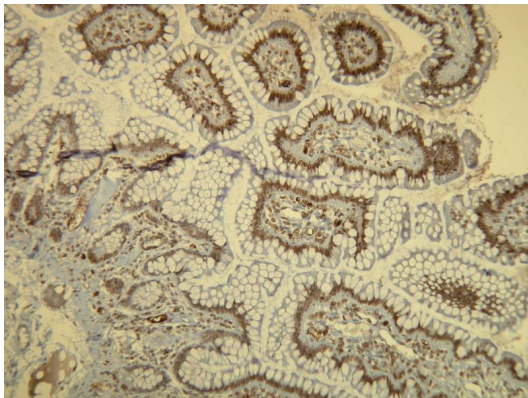
Properties

Form	Liquid
Buffer	20 mM Tris-HCl (pH 8.0), 0.05% Sodium azide and 20 mg/ml BSA
Preservative	0.05% Sodium azide
Stabilizer	20 mg/ml BSA
Storage instruction	For continuous use, store undiluted antibody at 2-8°C for up to a week. For long-term storage, aliquot and store at -20°C or below. Storage in frost free freezers is not recommended. Avoid repeated freeze/thaw cycles. Suggest spin the vial prior to opening. The antibody solution should be gently mixed before use.
Note	For laboratory research only, not for drug, diagnostic or other use.

Bioinformation

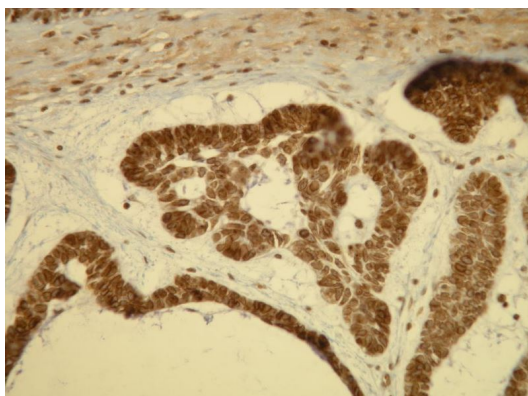
Database links	GeneID: 109880 Mouse GeneID: 673 Human Swiss-port # P15056 Human Swiss-port # P28028 Mouse
Gene Symbol	BRAF
Gene Full Name	B-Raf proto-oncogene, serine/threonine kinase
Background	This gene encodes a protein belonging to the raf/mil family of serine/threonine protein kinases. This protein plays a role in regulating the MAP kinase/ERKs signaling pathway, which affects cell division, differentiation, and secretion. Mutations in this gene are associated with cardiofaciocutaneous syndrome, a disease characterized by heart defects, mental retardation and a distinctive facial appearance. Mutations in this gene have also been associated with various cancers, including non-Hodgkin lymphoma, colorectal cancer, malignant melanoma, thyroid carcinoma, non-small cell lung carcinoma, and adenocarcinoma of lung. A pseudogene, which is located on chromosome X, has been identified for this gene. [provided by RefSeq, Jul 2008]
Function	Protein kinase involved in the transduction of mitogenic signals from the cell membrane to the nucleus. May play a role in the postsynaptic responses of hippocampal neuron. Phosphorylates MAP2K1, and thereby contributes to the MAP kinase signal transduction pathway. [UniProt]
Calculated Mw	84 kDa
PTM	Phosphorylation at Ser-365 by SGK1 inhibits its activity. Methylation at Arg-671 decreases stability and kinase activity. Ubiquitinated by RNF149; which leads to proteasomal degradation. Polyubiquitinated at Lys-578 in response to EGF.

Images



ARG10554 anti-B Raf antibody [G11-G] IHC-P image

Immunohistochemistry: Formalin-fixed and paraffin-embedded Human epithelium and stromal cells in normal bowel mucosa tissue (4 µm sections) stained with ARG10554 anti-B Raf antibody [G11-G].



ARG10554 anti-B Raf antibody [G11-G] IHC-P image

Immunohistochemistry: Formalin-fixed and paraffin-embedded Human nuclei of basal cell carcinoma of the skin and dermal fibroblasts tissue (4 µm sections) stained with ARG10554 anti-B Raf antibody [G11-G].