

## ARG10562 anti-CTRP5 antibody [A14-A]

Package: 50 µl  
Store at: -20°C

### Summary

|                     |   |
|---------------------|---|
| Product Description | Rabbit Monoclonal antibody [A14-A] recognizes CTRP5           |
| Tested Reactivity   | Hu, Ms  |
| Tested Application  | WB  |
| Host                | Rabbit  |
| Clonality           | Monoclonal  |
| Clone               | A14-A   |
| Isotype             | IgG   |
| Target Name         | CTRP5   |
| Species             | Human   |
| Immunogen           | Synthetic peptide around the N-terminus of Human CTRP5        |
| Conjugation         | Un-conjugated   |
| Alternate Names     | CTRP5; Complement C1q tumor necrosis factor-related protein 5 |

### Application Instructions

|                   |  |                 |
|-------------------|--|-----------------|
| Application table | Application  | Dilution        |
|                   | WB   | Assay-dependent |
| Application Note  | * The dilutions indicate recommended starting dilutions and the optimal dilutions or concentrations should be determined by the scientist. |                 |

### Properties

|                     |  |
|---------------------|--|
| Form                | Liquid   |
| Buffer              | 20 mM Tris-HCl (pH 8.0), 0.05% Sodium azide and 10 mg/ml BSA   |
| Preservative        | 0.05% Sodium azide   |
| Stabilizer          | 10 mg/ml BSA   |
| Storage instruction | For continuous use, store undiluted antibody at 2-8°C for up to a week. For long-term storage, aliquot and store at -20°C or below. Storage in frost free freezers is not recommended. Avoid repeated freeze/thaw cycles. Suggest spin the vial prior to opening. The antibody solution should be gently mixed before use. |
| Note                | For laboratory research only, not for drug, diagnostic or other use.   |

### Bioinformation

|                |                                      |
|----------------|--------------------------------------|
| Database links | <a href="#">GeneID: 114902 Human</a> |
|----------------|--------------------------------------|

[GeneID: 235312 Mouse](#)

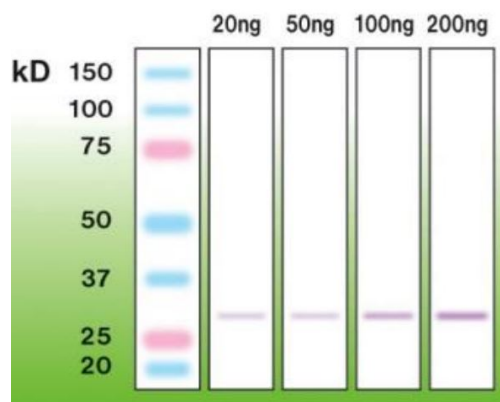
[Swiss-port # Q8K479 Mouse](#)

[Swiss-port # Q9BXJ0 Human](#)

|                |   |
|----------------|---|
| Gene Symbol    | C1QTNF5   |
| Gene Full Name | C1q and tumor necrosis factor related protein 5   |
| Background     | This gene encodes a member of a family of proteins that function as components of basement membranes and may play a role in cell adhesion. Mutations in this gene have been associated with late-onset retinal degeneration. The protein may be encoded by either a bicistronic transcript including sequence from the upstream membrane frizzled-related protein gene (MFRP), or by a monocistronic transcript expressed from an internal promoter. [provided by RefSeq, Jun 2013] |
| Calculated Mw  | 25 kDa  |

## Images

---



ARG10562 anti-CTRP5 antibody [A14-A] WB image

Western blot: 20, 50, 100, and 200 ng of Mouse recombinant CTRP5 stained with ARG10562 anti-CTRP5 antibody [A14-A].