

ARG10569 anti-Human IgG antibody [E20-V]

Package: 100 µl
Store at: -20°C

Summary

Product Description	Rabbit Monoclonal antibody [E20-V] recognizes Human IgG
Tested Reactivity	Hu
Tested Application	IHC-P
Host	Rabbit
Clonality	Monoclonal
Clone	E20-V
Isotype	IgG
Target Name	Human IgG
Antigen Species	Human
Immunogen	Synthetic peptide around the internal domain of Human IgG-1 chain C region
Conjugation	Un-conjugated
Alternate Names	Ig gamma-1 chain C region

Application Instructions

Application table	Application	Dilution
	IHC-P	1:100 - 1:300
Application Note	* The dilutions indicate recommended starting dilutions and the optimal dilutions or concentrations should be determined by the scientist.	

Properties

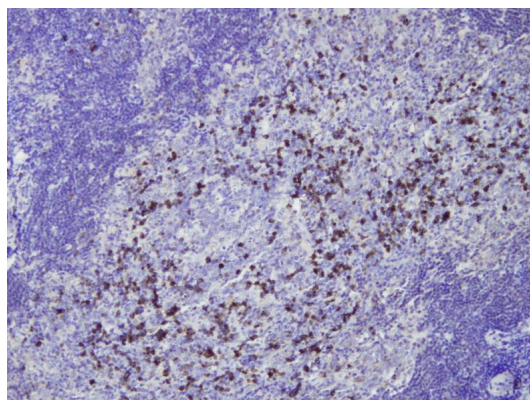
Form	Liquid
Buffer	20 mM Tris-HCl (pH 8.0), 0.05% Sodium azide and 20 mg/ml BSA
Preservative	0.05% Sodium azide
Stabilizer	20 mg/ml BSA
Storage instruction	For continuous use, store undiluted antibody at 2-8°C for up to a week. For long-term storage, aliquot and store at -20°C or below. Storage in frost free freezers is not recommended. Avoid repeated freeze/thaw cycles. Suggest spin the vial prior to opening. The antibody solution should be gently mixed before use.
Note	For laboratory research only, not for drug, diagnostic or other use.

Bioinformation

Database links	GeneID: 3500 Human
----------------	------------------------------------

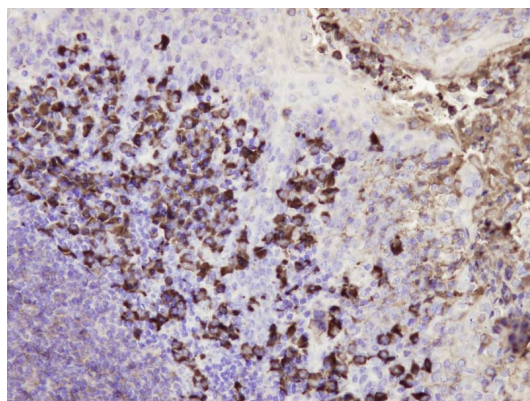
Gene Symbol	IGHG1
Gene Full Name	immunoglobulin heavy constant gamma 1 (G1m marker)

Images



ARG10569 anti-Human IgG antibody [E20-V] IHC-P image

Immunohistochemistry: Formalin fixed, paraffin embedded Human plasma cells in the case of IgG4-related chronic sclerosing sialoadenitis tissues (4 μ m sections) stained with ARG10569 anti-Human IgG antibody [E20-V].



ARG10569 anti-Human IgG antibody [E20-V] IHC-P image

Immunohistochemistry: Formalin fixed, paraffin embedded Human plasma cells in tonsillar tissue (4 μ m sections) stained with ARG10569 anti-Human IgG antibody [E20-V].