

ARG10579 anti-Nephrin antibody [Y17-R]

Package: 50 µl
Store at: -20°C

Summary

Product Description	Rabbit Monoclonal antibody [Y17-R] recognizes Nephrin
Tested Reactivity	Hu, Ms, Rat
Tested Application	ICC/IF, WB
Host	Rabbit
Clonality	Monoclonal
Clone	Y17-R
Isotype	IgG
Target Name	Nephrin
Species	Human
Immunogen	Synthetic peptide around the center of the fifth Ig-like domain of Human nephrin (between residues Cys465-Cys528)
Conjugation	Un-conjugated
Alternate Names	CNF; NPHN; Renal glomerulus-specific cell adhesion receptor; nephrin; Nephrin

Application Instructions

Application table	Application	Dilution
	ICC/IF	Assay-dependent
	WB	1:1000 - 1:5000
Application Note	* The dilutions indicate recommended starting dilutions and the optimal dilutions or concentrations should be determined by the scientist.	

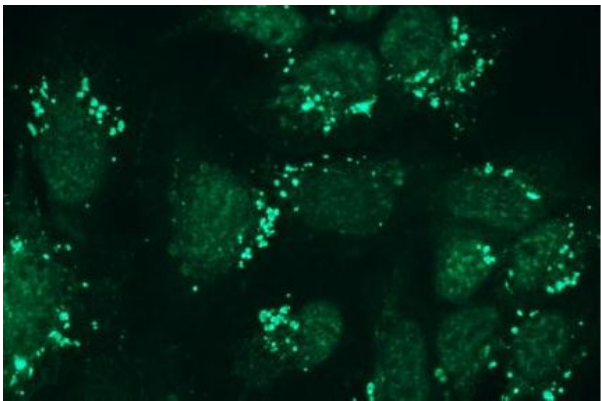
Properties

Form	Liquid
Buffer	20 mM Tris-HCl (pH 8.0), 0.05% Sodium azide and 10 mg/ml BSA
Preservative	0.05% Sodium azide
Stabilizer	10 mg/ml BSA
Storage instruction	For continuous use, store undiluted antibody at 2-8°C for up to a week. For long-term storage, aliquot and store at -20°C or below. Storage in frost free freezers is not recommended. Avoid repeated freeze/thaw cycles. Suggest spin the vial prior to opening. The antibody solution should be gently mixed before use.
Note	For laboratory research only, not for drug, diagnostic or other use.

Bioinformation

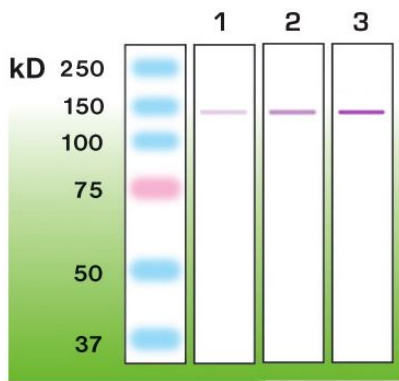
Gene Symbol	NPHS1
Gene Full Name	nephrosis 1, congenital, Finnish type (nephrin)
Background	This gene encodes a member of the immunoglobulin family of cell adhesion molecules that functions in the glomerular filtration barrier in the kidney. The gene is primarily expressed in renal tissues, and the protein is a type-1 transmembrane protein found at the slit diaphragm of glomerular podocytes. The slit diaphragm is thought to function as an ultrafilter to exclude albumin and other plasma macromolecules in the formation of urine. Mutations in this gene result in Finnish-type congenital nephrosis 1, characterized by severe proteinuria and loss of the slit diaphragm and foot processes.[provided by RefSeq, Oct 2009]
Function	Seems to play a role in the development or function of the kidney glomerular filtration barrier. Regulates glomerular vascular permeability. May anchor the podocyte slit diaphragm to the actin cytoskeleton. Plays a role in skeletal muscle formation through regulation of myoblast fusion (By similarity). [UniProt]
Calculated Mw	135 kDa
PTM	Phosphorylated at Tyr-1193 by FYN, leading to the recruitment and activation of phospholipase C-gamma-1/PLCG1.

Images



ARG10579 anti-Nephrin antibody [Y17-R] ICC/IF image

Immunocytochemistry: HEK293 cells stained with ARG10579 anti-Nephrin antibody [Y17-R] at 1:700 dilution.



ARG10579 anti-Nephrin antibody [Y17-R] WB image

Western blot: 1) 50 ng, 2) 100 ng, and 3) 200 ng of recombinant Mouse nephrin (extracellular domain, Gln37 - Thr1049) stained with ARG10579 anti-Nephrin antibody [Y17-R].