

## ARG10598 anti-ABCB11 antibody

Package: 50 µg  
Store at: -20°C

### Summary

Product Description	Rabbit Polyclonal antibody recognizes ABCB11
Tested Reactivity	Hu, Ms, Rat
Tested Application	FACS, IHC-P, WB
Host	Rabbit
Clonality	Polyclonal
Target Name	ABCB11
Species	Human
Immunogen	aa. KYGDNTKEIPMERVIAAAKQQLHD of Human ABCB11.
Conjugation	Un-conjugated
Alternate Names	SPGP; ABC16; BRIC2; PGY4; Bile salt export pump; PFIC2; PFIC-2; ATP-binding cassette sub-family B member 11; BSEP

### Application Instructions

Application table	Application	Dilution
	FACS	1 - 3 µg/10 <sup>6</sup> cells
	IHC-P	0.5 - 2 µg/ml
	WB	0.1 - 0.5 µg/ml

**Application Note**

IHC-P: Antigen Retrieval: Boil the tissue sections in 10 mM Citrate buffer (pH 6.0) for 20 min and allow to cool prior to staining.

\* The dilutions indicate recommended starting dilutions and the optimal dilutions or concentrations should be determined by the scientist.

### Properties

Form	Liquid
Purification	Affinity purification with immunogen.
Buffer	PBS, 0.025% Sodium azide and 2.5% BSA.
Preservative	0.025% Sodium azide
Stabilizer	2.5% BSA
Concentration	0.5 mg/ml
Storage instruction	For continuous use, store undiluted antibody at 2-8°C for up to a week. For long-term storage, aliquot and store at -20°C or below. Storage in frost free freezers is not recommended. Avoid repeated freeze/thaw cycles. Suggest spin the vial prior to opening. The antibody solution should be gently mixed before use.

Note

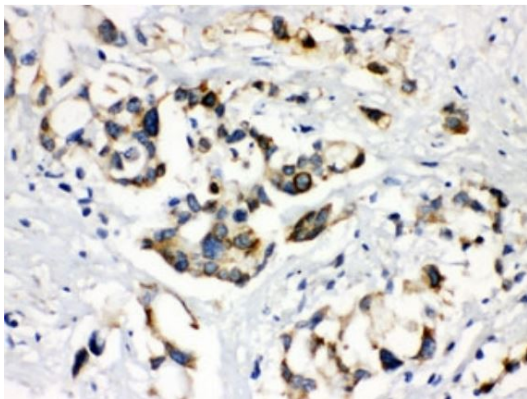
For laboratory research only, not for drug, diagnostic or other use.

## Bioinformation

Gene Symbol	ABCB11
Gene Full Name	ATP-binding cassette, sub-family B (MDR/TAP), member 11
Background	The membrane-associated protein encoded by this gene is a member of the superfamily of ATP-binding cassette (ABC) transporters. ABC proteins transport various molecules across extra- and intra-cellular membranes. ABC genes are divided into seven distinct subfamilies (ABC1, MDR/TAP, MRP, ALD, OABP, GCN20, White). This protein is a member of the MDR/TAP subfamily. Members of the MDR/TAP subfamily are involved in multidrug resistance. The protein encoded by this gene is the major canalicular bile salt export pump in man. Mutations in this gene cause a form of progressive familial intrahepatic cholestases which are a group of inherited disorders with severe cholestatic liver disease from early infancy. [provided by RefSeq, Jul 2008]
Function	Involved in the ATP-dependent secretion of bile salts into the canalculus of hepatocytes. [UniProt]
Calculated Mw	146 kDa

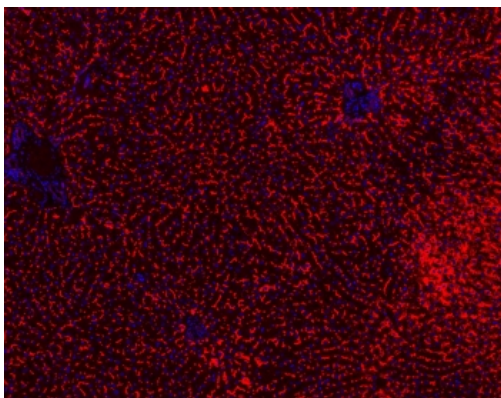
## Images

---



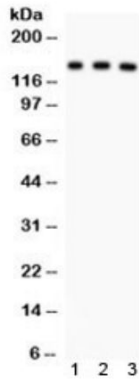
ARG10598 anti-ABCB11 antibody IHC-P image

Immunohistochemistry: Formalin-fixed and Paraffin-embedded Human liver cancer stained with ARG10598 anti-ABCB11 antibody.



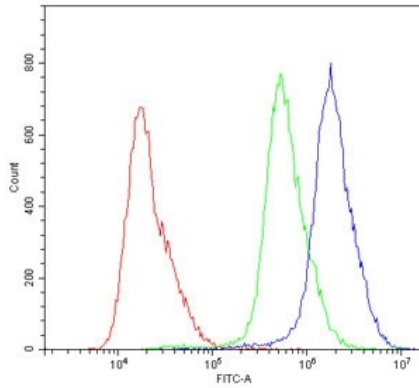
ARG10598 anti-ABCB11 antibody IHC image

Immunohistochemistry: Mouse liver tissue stained with ARG10598 anti-ABCB11 antibody (red). DAPI (blue) for nuclear staining.



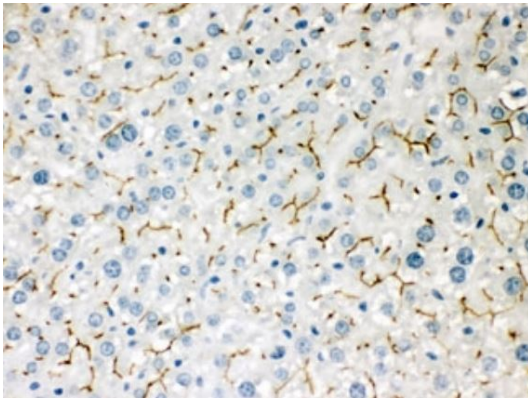
ARG10598 anti-ABCB11 antibody WB image

Western blot: 1) Rat liver, 2) Mouse liver and 3) Human SMMC lysate stained with ARG10598 anti-ABCB11 antibody.



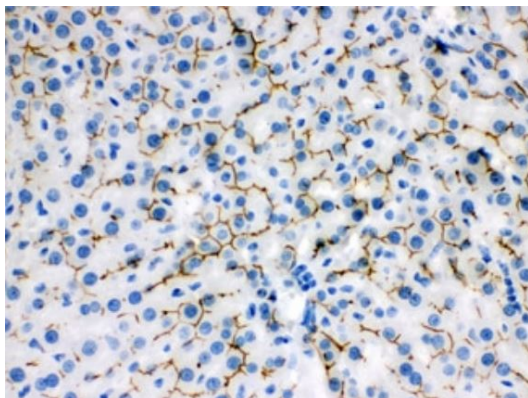
ARG10598 anti-ABCB11 antibody FACS image

Flow Cytometry: A431 cells were blocked with goat sera and stained with ARG10598 anti-ABCB11 antibody at  $1 \mu\text{g}/10^6$  cells (blue); Cells alone (red); Isotype control (green).



ARG10598 anti-ABCB11 antibody IHC-P image

Immunohistochemistry: Formalin-fixed and Paraffin-embedded Mouse liver stained with ARG10598 anti-ABCB11 antibody.



ARG10598 anti-ABCB11 antibody IHC-P image

Immunohistochemistry: Formalin-fixed and Paraffin-embedded Rat liver stained with ARG10598 anti-ABCB11 antibody.