

ARG10599 anti-SLC10A1 antibody

Package: 50 µg
Store at: -20°C

Summary

Product Description	Rabbit Polyclonal antibody recognizes SLC10A1
Tested Reactivity	Hu, Ms, Rat
Tested Application	IHC-P, WB
Host	Rabbit
Clonality	Polyclonal
Target Name	SLC10A1
Antigen Species	Human
Immunogen	aa. 141-154 (YSRGIYDGLKDKV) of Human SLC10A1.
Conjugation	Un-conjugated
Alternate Names	Sodium/bile acid cotransporter; Cell growth-inhibiting gene 29 protein; Na; Sodium/taurocholate cotransporting polypeptide; Solute carrier family 10 member 1; NTC1

Application Instructions

Application table	Application	Dilution
	IHC-P	0.5 - 1 µg/ml
	WB	0.5 - 1 µg/ml
Application Note	Antigen Retrieval for IHC-P: steamed with pH 6 citrate buffer. * The dilutions indicate recommended starting dilutions and the optimal dilutions or concentrations should be determined by the scientist.	
Calculated Mw	38 kDa	

Properties

Form	Liquid
Purification	Affinity purification with immunogen.
Buffer	PBS, 0.025% Sodium azide and 2.5% BSA.
Preservative	0.025% Sodium azide
Stabilizer	2.5% BSA
Concentration	0.5 mg/ml
Storage instruction	For continuous use, store undiluted antibody at 2-8°C for up to a week. For long-term storage, aliquot and store at -20°C or below. Storage in frost free freezers is not recommended. Avoid repeated freeze/thaw cycles. Suggest spin the vial prior to opening. The antibody solution should be gently mixed before use.

Note

For laboratory research only, not for drug, diagnostic or other use.

Bioinformation

Gene Symbol

SLC10A1

Gene Full Name

solute carrier family 10 (sodium/bile acid cotransporter), member 1

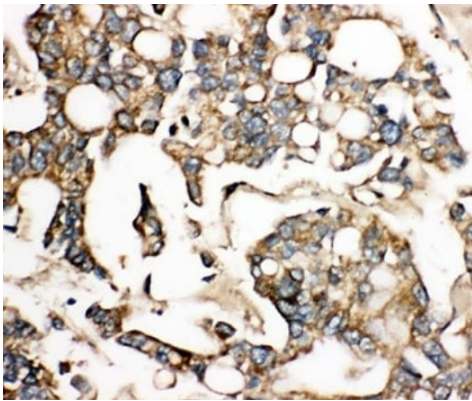
Background

The protein encoded by this gene belongs to the sodium/bile acid cotransporter family, which are integral membrane glycoproteins that participate in the enterohepatic circulation of bile acids. Two homologous transporters are involved in the reabsorption of bile acids; the ileal sodium/bile acid cotransporter with an apical cell localization that absorbs bile acids from the intestinal lumen, bile duct and kidney, and the liver-specific sodium/bile acid cotransporter, represented by this protein, that is found in the basolateral membranes of hepatocytes. Bile acids are the catabolic product of cholesterol metabolism, hence this protein is important for cholesterol homeostasis. [provided by RefSeq, Oct 2011]

Function

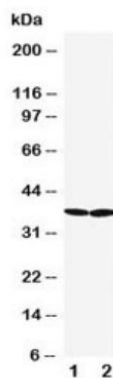
The hepatic sodium/bile acid uptake system exhibits broad substrate specificity and transports various non-bile acid organic compounds as well. It is strictly dependent on the extracellular presence of sodium. [UniProt]

Images



ARG10599 anti-SLC10A1 antibody IHC-P image

Immunohistochemistry: Human liver cancer tissue stained with ARG10599 anti-SLC10A1 antibody.



ARG10599 anti-SLC10A1 antibody WB image

Western blot: 1) Rat liver and 2) Rat brain lysate stained with ARG10599 anti-SLC10A1 antibody.