

ARG10603
anti-ABCC1 / MRP1 antibodyPackage: 50 µg
Store at: -20°C

Summary

Product Description	Rabbit Polyclonal antibody recognizes ABCC1 / MRP1
Tested Reactivity	Hu, Ms, Rat
Tested Application	IHC-P, WB
Host	Rabbit
Clonality	Polyclonal
Isotype	IgG
Target Name	ABCC1 / MRP1
Antigen Species	Human
Immunogen	Synthetic peptide from Human MRP1 protein. (LLQQRGLFYSMADAGLV)
Conjugation	Un-conjugated
Alternate Names	GS-X; ATP-binding cassette sub-family C member 1; ABCC; Leukotriene C; ABC29; MRP; 4; LTC4 transporter; MRP1; Multidrug resistance-associated protein 1

Application Instructions

Application table	Application	Dilution
	IHC-P	0.5 - 1 µg/ml
	WB	0.5 - 1 µg/ml
Application Note	* The dilutions indicate recommended starting dilutions and the optimal dilutions or concentrations should be determined by the scientist.	
Calculated Mw	172 kDa	

Properties

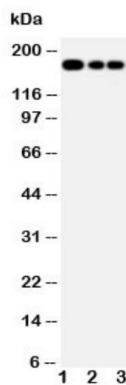
Form	Liquid
Purification	Affinity purification with immunogen.
Buffer	PBS, 0.025% Sodium azide and 2.5% BSA
Preservative	0.025% Sodium azide
Stabilizer	2.5% BSA
Concentration	0.5 mg/ml
Storage instruction	For continuous use, store undiluted antibody at 2-8°C for up to a week. For long-term storage, aliquot and store at -20°C or below. Storage in frost free freezers is not recommended. Avoid repeated freeze/thaw cycles. Suggest spin the vial prior to opening. The antibody solution should be gently mixed before use.

Note For laboratory research only, not for drug, diagnostic or other use.

Bioinformation

Database links	GeneID: 17250 Mouse GeneID: 4363 Human Swiss-port # O35379 Mouse Swiss-port # P33527 Human
Gene Symbol	ABCC1
Gene Full Name	ATP-binding cassette, sub-family C (CFTR/MRP), member 1
Background	The protein encoded by this gene is a member of the superfamily of ATP-binding cassette (ABC) transporters. ABC proteins transport various molecules across extra-and intra-cellular membranes. ABC genes are divided into seven distinct subfamilies (ABC1, MDR/TAP, MRP, ALD, OABP, GCN20, White). This full transporter is a member of the MRP subfamily which is involved in multi-drug resistance. This protein functions as a multispecific organic anion transporter, with oxidized glutathione, cysteinyl leukotrienes, and activated aflatoxin B1 as substrates. This protein also transports glucuronides and sulfate conjugates of steroid hormones and bile salts. Alternatively spliced variants of this gene have been described but their full-length nature is unknown. [provided by RefSeq, Apr 2012]
Function	Mediates export of organic anions and drugs from the cytoplasm. Mediates ATP-dependent transport of glutathione and glutathione conjugates, leukotriene C4, estradiol-17-beta-o-glucuronide, methotrexate, antiviral drugs and other xenobiotics. Confers resistance to anticancer drugs. Hydrolyzes ATP with low efficiency. [UniProt]
Cellular Localization	Cell membrane

Images



ARG10603 anti-ABCC1 / MRP1 antibody WB image

Western blot: 1) Jurkat, 2) CEM, and 3) A549 cell lysates stained with ARG10603 anti-ABCC1 / MRP1 antibody.