

ARG10653 anti-SERCA2 ATPase antibody

Package: 50 µg
Store at: -20°C

Summary

Product Description	Rabbit Polyclonal antibody recognizes SERCA2 ATPase
Tested Reactivity	Hu, Ms, Rat
Tested Application	IHC-P, WB
Host	Rabbit
Clonality	Polyclonal
Isotype	IgG
Target Name	SERCA2 ATPase
Antigen Species	Human
Immunogen	Synthetic peptide around the center region of Human SERCA2 ATPase. 100% homologous in Human, Mouse and Rat. (QRDACLNARCFARVE)
Conjugation	Un-conjugated
Alternate Names	ATP2B; Endoplasmic reticulum class 1/2 Ca; SERCA2; SR Ca; DD; Sarcoplasmic/endoplasmic reticulum calcium ATPase 2; EC 3.6.3.8; Calcium pump 2; DAR; Calcium-transporting ATPase sarcoplasmic reticulum type, slow twitch skeletal muscle isoform; 2+

Application Instructions

Application table	Application	Dilution
	IHC-P	0.5 - 1 µg/ml
	WB	0.5 - 1 µg/ml
Application Note	* The dilutions indicate recommended starting dilutions and the optimal dilutions or concentrations should be determined by the scientist.	
Calculated Mw	115 kDa	

Properties

Form	Liquid
Purification	Affinity purification with immunogen.
Buffer	PBS, 0.025% Sodium azide and 2.5% BSA.
Preservative	0.025% Sodium azide
Stabilizer	2.5% BSA
Concentration	0.5 mg/ml
Storage instruction	For continuous use, store undiluted antibody at 2-8°C for up to a week. For long-term storage, aliquot and store at -20°C or below. Storage in frost free freezers is not recommended. Avoid repeated freeze/thaw cycles. Suggest spin the vial prior to opening. The antibody solution should be gently mixed

before use.

Note

For laboratory research only, not for drug, diagnostic or other use.

Bioinformation

Gene Symbol

ATP2A2

Gene Full Name

ATPase, Ca⁺⁺ transporting, cardiac muscle, slow twitch 2

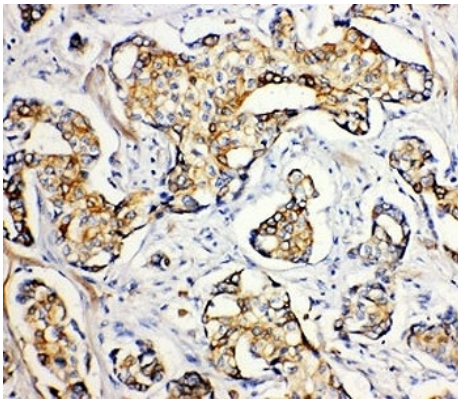
Background

This gene encodes one of the SERCA Ca(2+)-ATPases, which are intracellular pumps located in the sarcoplasmic or endoplasmic reticula of muscle cells. This enzyme catalyzes the hydrolysis of ATP coupled with the translocation of calcium from the cytosol into the sarcoplasmic reticulum lumen, and is involved in regulation of the contraction/relaxation cycle. Mutations in this gene cause Darier-White disease, also known as keratosis follicularis, an autosomal dominant skin disorder characterized by loss of adhesion between epidermal cells and abnormal keratinization. Alternative splicing results in multiple transcript variants encoding different isoforms. [provided by RefSeq, Oct 2008]

Function

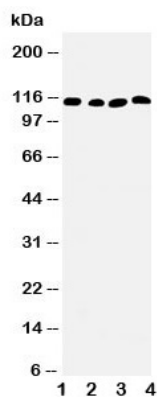
This magnesium-dependent enzyme catalyzes the hydrolysis of ATP coupled with the translocation of calcium from the cytosol to the sarcoplasmic reticulum lumen. Isoform 2 is involved in the regulation of the contraction/relaxation cycle. [UniProt]

Images



ARG10653 anti-SERCA2 ATPase antibody IHC-P image

Immunohistochemistry: Paraffin-embedded Human breast cancer tissue stained with ARG10653 anti-SERCA2 ATPase antibody.



ARG10653 anti-SERCA2 ATPase antibody WB image

Western blot: 1) Rat skeletal muscle, 2) Rat kidney, 3) Human PANC, and 4) SMMC-7721 cell lysates stained with ARG10653 anti-SERCA2 ATPase antibody.