

ARG10664 anti-Cathepsin B antibody

Package: 50 µg
Store at: -20°C

Summary

Product Description	Rabbit Polyclonal antibody recognizes Cathepsin B
Tested Reactivity	Hu
Tested Application	WB
Host	Rabbit
Clonality	Polyclonal
Isotype	IgG
Target Name	Cathepsin B
Antigen Species	Human
Immunogen	Partial recombinant protein around aa. 80-333 of Human Cathepsin B.
Conjugation	Un-conjugated
Alternate Names	EC 3.4.22.1; Cathepsin B; APPS; CPSB; APP secretase; Cathepsin B1

Application Instructions

Application table	Application	Dilution
	WB	1:500 - 1:2000
Application Note	* The dilutions indicate recommended starting dilutions and the optimal dilutions or concentrations should be determined by the scientist.	
Calculated Mw	38 kDa	

Properties

Form	Liquid
Purification	Affinity purification with immunogen.
Buffer	PBS, 0.025% Sodium azide and 2.5% BSA.
Preservative	0.025% Sodium azide
Stabilizer	2.5% BSA
Concentration	0.5 mg/ml
Storage instruction	For continuous use, store undiluted antibody at 2-8°C for up to a week. For long-term storage, aliquot and store at -20°C or below. Storage in frost free freezers is not recommended. Avoid repeated freeze/thaw cycles. Suggest spin the vial prior to opening. The antibody solution should be gently mixed before use.
Note	For laboratory research only, not for drug, diagnostic or other use.

Bioinformation

Database links

[GeneID: 1508 Human](#)

[Swiss-port # P07858 Human](#)

Gene Symbol

CTSB

Gene Full Name

cathepsin B

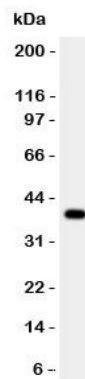
Background

The protein encoded by this gene is a lysosomal cysteine proteinase composed of a dimer of disulfide-linked heavy and light chains, both produced from a single protein precursor. It is also known as amyloid precursor protein secretase and is involved in the proteolytic processing of amyloid precursor protein (APP). Incomplete proteolytic processing of APP has been suggested to be a causative factor in Alzheimer disease, the most common cause of dementia. Overexpression of the encoded protein, which is a member of the peptidase C1 family, has been associated with esophageal adenocarcinoma and other tumors. At least five transcript variants encoding the same protein have been found for this gene. [provided by RefSeq, Jul 2008]

Function

Thiol protease which is believed to participate in intracellular degradation and turnover of proteins. Has also been implicated in tumor invasion and metastasis. [UniProt]

Images



ARG10664 anti-Cathepsin B antibody WB image

Western blot: HepG2 cell lysate stained with ARG10664 anti-Cathepsin B antibody.