

## ARG10674 anti-IGFBP2 antibody

Package: 50 µg  
Store at: -20°C

### Summary

Product Description	Rabbit Polyclonal antibody recognizes IGFBP2
Tested Reactivity	Hu, Rat
Tested Application	WB
Host	Rabbit
Clonality	Polyclonal
Isotype	IgG
Target Name	IGFBP2
Species	Human
Immunogen	Synthetic peptide corresponding to the sequence at a.a 228-257 (QQELDQVLERISTMRLPDERGPLEHLYSLH) around the C-terminus of human IGFBP2 protein.
Conjugation	Un-conjugated
Alternate Names	IBP2; IGF-BP53; IGF-binding protein 2; IGFBP-2

### Application Instructions

Application table	Application	Dilution
	WB	0.1 - 0.5 µg/ml
Application Note	* The dilutions indicate recommended starting dilutions and the optimal dilutions or concentrations should be determined by the scientist.	

### Properties

Form	Liquid
Purification	Affinity purification with immunogen.
Buffer	1X PBS, 0.025% Sodium azide and 2.6% BSA
Preservative	0.026% Sodium azide
Stabilizer	2.6% BSA
Concentration	0.5 mg/ml
Storage instruction	For continuous use, store undiluted antibody at 2-8°C for up to a week. For long-term storage, aliquot and store at -20°C or below. Storage in frost free freezers is not recommended. Avoid repeated freeze/thaw cycles. Suggest spin the vial prior to opening. The antibody solution should be gently mixed before use.
Note	For laboratory research only, not for drug, diagnostic or other use.

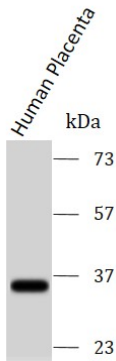
Database links	<a href="#">GeneID: 25662 Rat</a> <a href="#">GeneID: 3485 Human</a> <a href="#">Swiss-port # P12843 Rat</a> <a href="#">Swiss-port # P18065 Human</a>
Gene Symbol	IGFBP2
Gene Full Name	Insulin Like Growth Factor Binding Protein 2
Background	The protein encoded by this gene is one of six similar proteins that bind insulin-like growth factors I and II (IGF-I and IGF-II). The encoded protein can be secreted into the bloodstream, where it binds IGF-I and IGF-II with high affinity, or it can remain intracellular, interacting with many different ligands. High expression levels of this protein promote the growth of several types of tumors and may be predictive of the chances of recovery of the patient. Several transcript variants, one encoding a secreted isoform and the others encoding nonsecreted isoforms, have been found for this gene. [provided by RefSeq, Sep 2015]
Function	Inhibits IGF-mediated growth and developmental rates. IGF-binding proteins prolong the half-life of the IGFs and have been shown to either inhibit or stimulate the growth promoting effects of the IGFs on cell culture. They alter the interaction of IGFs with their cell surface receptors. [UniProt]
Calculated Mw	35 kDa
PTM	O-glycosylated.

Images



ARG10674 anti-IGFBP2 antibody WB image

Western blot: Rat Brain and Rat Liver stained with ARG10674 anti-IGFBP2 antibody at 0.5 µg/mL dilution.



ARG10674 anti-IGFBP2 antibody WB image

Western blot: Human Placenta stained with ARG10674 anti-IGFBP2 antibody at 0.5 µg/mL dilution.