

## ARG10691 anti-ALDH1L1 antibody [2E7]

Package: 50 µl  
Store at: -20°C

### Summary

Product Description	Mouse Monoclonal antibody [2E7] recognizes ALDH1L1
Tested Reactivity	Hu, Ms, Rat, Cow, Hrs, Pig
Predict Reactivity	Chk
Tested Application	ICC/IF, IHC-Fr, WB
Host	Mouse
Clonality	Monoclonal
Clone	2E7
Isotype	IgG1
Target Name	ALDH1L1
Antigen Species	Human
Immunogen	Synthetic peptide around aa. 402-902 of Human ALDH1L1.
Conjugation	Un-conjugated
Alternate Names	10-fTHF; EC 1.5.1.6; FDH; Aldehyde dehydrogenase family 1 member L1; FTHFD; 10-FTHFDH; Cytosolic 10-formyltetrahydrofolate dehydrogenase

### Application Instructions

Application table	Application	Dilution
	ICC/IF	1:2000
	IHC-Fr	1:2000
	WB	1:5000 - 1:10000
Application Note	* The dilutions indicate recommended starting dilutions and the optimal dilutions or concentrations should be determined by the scientist.	
Calculated Mw	99 kDa	

### Properties

Form	Liquid
Purification	Affinity purification.
Buffer	PBS and 50% Glycerol.
Stabilizer	50% Glycerol
Concentration	1 mg/ml
Storage instruction	For continuous use, store undiluted antibody at 2-8°C for up to a week. For long-term storage, aliquot and store at -20°C. Storage in frost free freezers is not recommended. Avoid repeated freeze/thaw

cycles. Suggest spin the vial prior to opening. The antibody solution should be gently mixed before use.

#### Note

For laboratory research only, not for drug, diagnostic or other use.

## Bioinformation

Gene Symbol

ALDH1L1

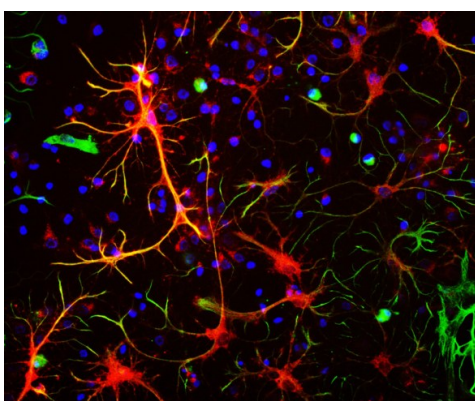
Gene Full Name

aldehyde dehydrogenase 1 family, member L1

Background

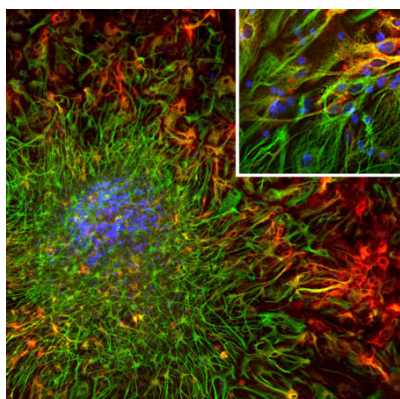
The protein encoded by this gene catalyzes the conversion of 10-formyltetrahydrofolate, nicotinamide adenine dinucleotide phosphate (NADP+), and water to tetrahydrofolate, NADPH, and carbon dioxide. The encoded protein belongs to the aldehyde dehydrogenase family. Loss of function or expression of this gene is associated with decreased apoptosis, increased cell motility, and cancer progression. There is an antisense transcript that overlaps on the opposite strand with this gene locus. Alternative splicing results in multiple transcript variants. [provided by RefSeq, Jun 2012]

## Images



ARG10691 anti-ALDH1L1 antibody [2E7] ICC/IF image

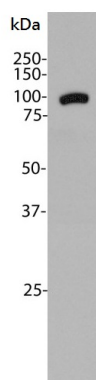
Immunocytochemistry: Rat Neuron-glia cell mixed cultures stained with ARG10691 anti-ALDH1L1 antibody [2E7] (red) and co-stained with chicken polyclonal antibody against vimentin (green). Blue is a DNA stain. ARG10691 anti-ALDH1L1 antibody [2E7] stains astrocytic cell bodies and processes. The fibroblastic cells contain only vimentin and so are green, while astrocytes contain either vimentin and ALDH1L1, so appearing golden, or predominantly ALDH1L1, in which case they appear red.



ARG10691 anti-ALDH1L1 antibody [2E7] ICC/IF image

Immunofluorescence: Cortical neuron-glia cells from E20 Rat stained with ARG10691 anti-ALDH1L1 antibody [2E7] (red) at 1:1000 dilution and costained with [ARG52313](#) anti-GFAP antibody (green) at 1:5000 dilution. Hoechst (blue) for nuclear staining.

Clone 2E7 produces cytoplasmic staining of glial cells, while the GFAP antibody labels the intermediate filament cytoskeleton in astrocytes and other glial cells. Some astrocytic cells express both ALDH1L1 and GFAP and therefore appear yellow.



ARG10691 anti-ALDH1L1 antibody [2E7] WB image

Western blot: Rat liver tissue homogenates stained with ARG10691 anti-ALDH1L1 antibody [2E7].

### ARG10691 anti-ALDH1L1 antibody [2E7] WB image

Western blot: Rat heart, Rat liver, Rat kidney, Rat lung, Rat brain, Rat spinal cord, Mouse brain, Mouse spinal cord, NIH/3T3 and HEK293 cell lysates stained with ARG10691 anti-ALDH1L1 antibody [2E7] (green) at 1:5000 dilution.

