

ARG10696 anti-Arrestin 1 / S-Arrestin antibody [S128]

Package: 50 µl
Store at: -20°C

Summary

Product Description	Mouse Monoclonal antibody [S128] recognizes Arrestin 1 / S-Arrestin
Tested Reactivity	Bov, Pig
Tested Application	ICC/IF, IHC-Fr, WB
Host	Mouse
Clonality	Monoclonal
Clone	S128
Isotype	IgG1
Target Name	Arrestin 1 / S-Arrestin
Antigen Species	Bovine
Immunogen	Recombinant Bovine Arrestin-1 with the first 20 aa of the C-terminus truncated.
Conjugation	Un-conjugated
Alternate Names	RP47; 48 kDa protein; S-arrestin; Rod photoreceptor arrestin; S-AG; Retinal S-antigen

Application Instructions

Application table	Application	Dilution
	ICC/IF	1:1000
	IHC-Fr	1:1000
	WB	1:5000
Application Note	* The dilutions indicate recommended starting dilutions and the optimal dilutions or concentrations should be determined by the scientist.	
Calculated Mw	45 kDa	

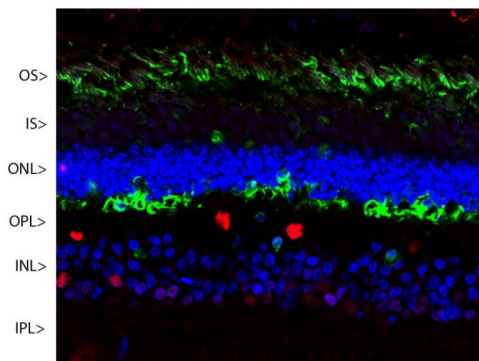
Properties

Form	Liquid
Purification	Affinity purification.
Buffer	PBS and 50% Glycerol.
Stabilizer	50% Glycerol
Concentration	1 mg/ml
Storage instruction	For continuous use, store undiluted antibody at 2-8°C for up to a week. For long-term storage, aliquot and store at -20°C. Storage in frost free freezers is not recommended. Avoid repeated freeze/thaw cycles. Suggest spin the vial prior to opening. The antibody solution should be gently mixed before use.

Bioinformation

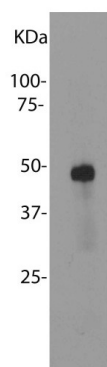
Database links	GeneID: 280922 Bovine GeneID: 397151 Pig Swiss-port # P08168 Bovine Swiss-port # P79260 Pig
Gene Symbol	SAG
Gene Full Name	S-antigen; retina and pineal gland (arrestin)
Background	Members of arrestin/beta-arrestin protein family are thought to participate in agonist-mediated desensitization of G-protein-coupled receptors and cause specific dampening of cellular responses to stimuli such as hormones, neurotransmitters, or sensory signals. S-arrestin, also known as S-antigen, is a major soluble photoreceptor protein that is involved in desensitization of the photoactivated transduction cascade. It is expressed in the retina and the pineal gland and inhibits coupling of rhodopsin to transducin in vitro. Additionally, S-arrestin is highly antigenic, and is capable of inducing experimental autoimmune uveoretinitis. Mutations in this gene have been associated with Oguchi disease, a rare autosomal recessive form of night blindness. [provided by RefSeq, Jul 2008]
Function	Arrestin is one of the major proteins of the ros (retinal rod outer segments); it binds to photoactivated-phosphorylated rhodopsin, thereby apparently preventing the transducin-mediated activation of phosphodiesterase. [UniProt]

Images



ARG10696 anti-Arrestin 1 / S-Arrestin antibody [S128] IHC-Fr image

Immunohistochemistry: Confocal image of a pig retina frozen section stained with ARG10696 anti-Arrestin 1 / S-Arrestin antibody [S128] (green). Visual arrestin is most abundant in the outer segments (OS) and inner surface of the outer nuclear layer (ONL), and can be used to identify components of rod photoreceptor cells. (Cone photoreceptors have a different arrestin isotype). Other retinal layers are inner segments (IS), outer plexiform layer (OPL), inner nuclear layer (INL) and inner plexiform layer (IPL). The red stain is Fox2, an RNA binding nuclear protein related to Fox3 / NeuN, which stains nuclei of horizontal neurons and some other neurons in the INL and IPL. Nuclear DNA was revealed with DAPI (blue).



ARG10696 anti-Arrestin 1 / S-Arrestin antibody [S128] WB image

Western blot: Bovine retinal extracts stained with ARG10696 anti-Arrestin 1 / S-Arrestin antibody [S128].