

ARG10711 anti-Coronin 1 / TACO antibody

Package: 50 µl
Store at: -20°C

Summary

Product Description	Rabbit Polyclonal antibody recognizes Coronin 1 / TACO
Tested Reactivity	Hu, Ms, Rat, Cow, Hrs, Pig
Predict Reactivity	Chk
Tested Application	ICC/IF, WB
Host	Rabbit
Clonality	Polyclonal
Isotype	IgG
Target Name	Coronin 1 / TACO
Immunogen	Full length recombinant protein.
Conjugation	Un-conjugated
Alternate Names	Clipin-A; Coronin-1A; Coronin-like protein A; CLABP; IMD8; CLIPINA; Tryptophan aspartate-containing coat protein; HCORO1; Coronin-like protein p57; TACO; p57

Application Instructions

Application table	Application	Dilution
	ICC/IF	1:500 - 1:1000
	WB	1:20000
Application Note	* The dilutions indicate recommended starting dilutions and the optimal dilutions or concentrations should be determined by the scientist.	

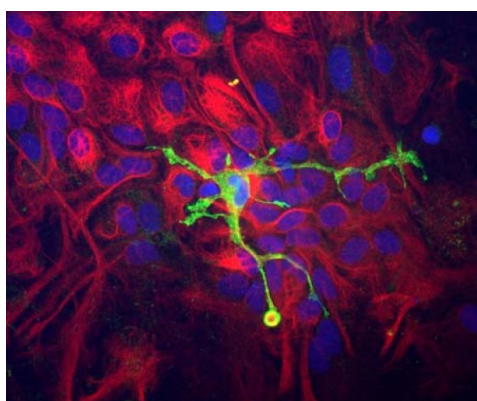
Properties

Form	Liquid
Purification	Affinity purification.
Buffer	PBS and 50% Glycerol.
Stabilizer	50% Glycerol
Concentration	1 mg/ml
Storage instruction	For continuous use, store undiluted antibody at 2-8°C for up to a week. For long-term storage, aliquot and store at -20°C. Storage in frost free freezers is not recommended. Avoid repeated freeze/thaw cycles. Suggest spin the vial prior to opening. The antibody solution should be gently mixed before use.
Note	For laboratory research only, not for drug, diagnostic or other use.

Bioinformation

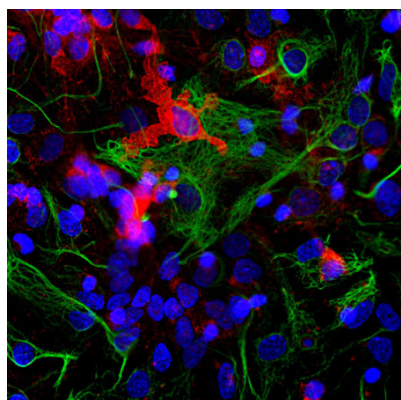
Gene Symbol	CORO1A
Gene Full Name	coronin, actin binding protein, 1A
Background	This gene encodes a member of the WD repeat protein family. WD repeats are minimally conserved regions of approximately 40 amino acids typically bracketed by gly-his and trp-asn (GH-WD), which may facilitate formation of heterotrimeric or multiprotein complexes. Members of this family are involved in a variety of cellular processes, including cell cycle progression, signal transduction, apoptosis, and gene regulation. Alternative splicing results in multiple transcript variants. A related pseudogene has been defined on chromosome 16. [provided by RefSeq, Sep 2010]
Function	May be a crucial component of the cytoskeleton of highly motile cells, functioning both in the invagination of large pieces of plasma membrane, as well as in forming protrusions of the plasma membrane involved in cell locomotion. In mycobacteria-infected cells, its retention on the phagosomal membrane prevents fusion between phagosomes and lysosomes. [UniProt]
Calculated Mw	51 kDa
PTM	phosphorylation at Thr-412 by PKC strongly down-regulates the association with actin. Polyubiquitinated by RNF128 with 'Lys-48'-linked chains, leading to proteasomal degradation.

Images



ARG10711 anti-Coronin 1 / TACO antibody ICC/IF image

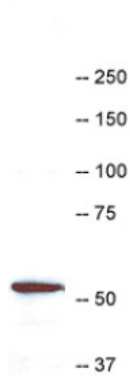
Immunocytochemistry: A mixed neuron / glial culture from newborn Rat brain stained with ARG10711 anti-Coronin 1 / TACO antibody (green) at 1:10000 and co-stained with chicken antibody to vimentin at 1:5000. Blue is nuclear DNA counter stain. Glial cells and fibroblasts stain with vimentin, while microglia alone stain strongly and specifically for Coronin 1a, which can therefore be used as a robust marker of this important cell type.



ARG10711 anti-Coronin 1 / TACO antibody ICC/IF image

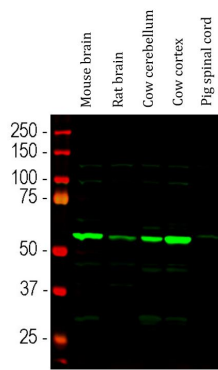
Immunofluorescence: Cortical neuron-glial cells from E20 Rat stained with ARG10711 anti-Coronin 1 / TACO antibody (red) at 1:1000 dilution and costained with Mouse mAb to GFAP (green) at 1:1000 dilution. Hoechst (blue) for nuclear staining.

The Coronin 1 antibody labels protein expressed in the cytoplasm of microglia cells, while GFAP antibody stains intermediate filaments in astrocytic cells.



ARG10711 anti-Coronin 1 / TACO antibody WB image

Western blot: HL60 cell extract stained with ARG10711 anti-Coronin 1 / TACO antibody at 1:10000 dilution. A prominent band running with an apparent SDS-PAGE molecular weight of ~57 kDa corresponds to Coronin 1a.



ARG10711 anti-Coronin 1 / TACO antibody WB image

Western blot: Mouse brain, Rat brain, Cow cerebellum, Cow cortex and Pig spinal cord lysates stained with ARG10711 anti-Coronin 1 / TACO antibody (green) at 1:5000 dilution.