

ARG10719 anti-MAP2ab antibody [4H5]

Package: 50 µl
Store at: -20°C

Summary

Product Description	Mouse Monoclonal antibody [4H5] recognizes MAP2ab
Tested Reactivity	Hu, Ms, Rat, Bov
Tested Application	ICC/IF, IHC-Fr, WB
Specificity	This antibody was raised against purified full length bovine brain MAP2 and the epitope was mapped to aa. 631-1056 of the human MAP2 sequence, so it reacts to MAP2a and MAP2b proteins.
Host	Mouse
Clonality	Monoclonal
Clone	4H5
Isotype	IgG1
Target Name	MAP2ab
Species	Human
Immunogen	Full length purified Bovine protein.
Epitope	Epitope mapped to projection domain of Human sequence, between aa. 631-1056.
Conjugation	Un-conjugated
Alternate Names	MAP2A; Microtubule-associated protein 2; MAP2C; MAP2B; MAP-2

Application Instructions

Application table	Application	Dilution
	ICC/IF	1:1000
	IHC-Fr	1:1000
	WB	1:10000
Application Note	* The dilutions indicate recommended starting dilutions and the optimal dilutions or concentrations should be determined by the scientist.	

Properties

Form	Liquid
Purification	Affinity purification.
Buffer	PBS and 50% Glycerol.
Stabilizer	50% Glycerol
Concentration	1 mg/ml
Storage instruction	For continuous use, store undiluted antibody at 2-8°C for up to a week. For long-term storage, aliquot and store at -20°C. Storage in frost free freezers is not recommended. Avoid repeated freeze/thaw

cycles. Suggest spin the vial prior to opening. The antibody solution should be gently mixed before use.

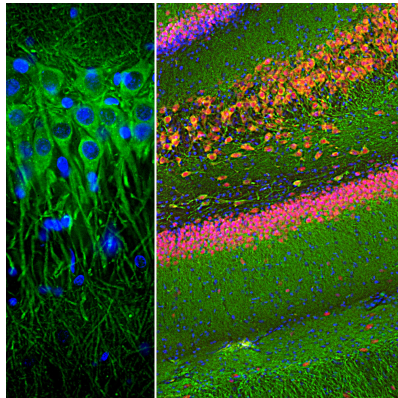
Note

For laboratory research only, not for drug, diagnostic or other use.

Bioinformation

Gene Symbol	MAP2
Gene Full Name	microtubule-associated protein 2
Background	This gene encodes a protein that belongs to the microtubule-associated protein family. The proteins of this family are thought to be involved in microtubule assembly, which is an essential step in neurogenesis. The products of similar genes in rat and mouse are neuron-specific cytoskeletal proteins that are enriched in dendrites, implicating a role in determining and stabilizing dendritic shape during neuron development. A number of alternatively spliced variants encoding distinct isoforms have been described. [provided by RefSeq, Jan 2010]
Function	The exact function of MAP2 is unknown but MAPs may stabilize the microtubules against depolymerization. They also seem to have a stiffening effect on microtubules. [UniProt]
Highlight	Related products: MAP2 antibodies ; MAP2 Duos / Panels ; Anti-Mouse IgG secondary antibodies ; Related news: Astrocyte-to-neuron conversion for Parkinson's disease treatment
Research Area	Controls and Markers antibody; Neuroscience antibody; Signaling Transduction antibody; Neuron Marker antibody; Mature Neuron Marker antibody; Neurite Marker antibody
Calculated Mw PTM	200 kDa Phosphorylated at serine residues in K-X-G-S motifs by MAP/microtubule affinity-regulating kinase (MARK1 or MARK2), causing detachment from microtubules, and their disassembly (By similarity). Isoform 2 is probably phosphorylated by PKA at Ser-323, Ser-354 and Ser-386 and by FYN at Tyr-67. The interaction with KNDC1 enhances MAP2 threonine phosphorylation (By similarity).

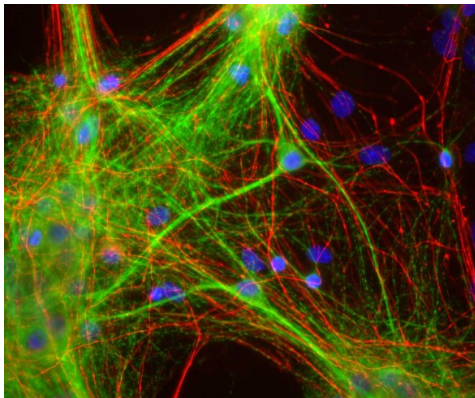
Images



ARG10719 anti-MAP2ab antibody [4H5] IHC-Fr image

Immunohistochemistry: Free-floating section of mouse cortex stained with ARG10719 anti-MAP2ab antibody [4H5] (green), and co-stained with [ARG10712](#) anti-FOX3 / NeuN antibody at 1:2000 dilution. DAPI (blue) used for nuclear staining.

This antibody labels MAP2 protein in the perikarya and dendrites of most neurons while the FOX3/NeuN antibody selectively stains nuclei and proximal soma of neuronal cells.



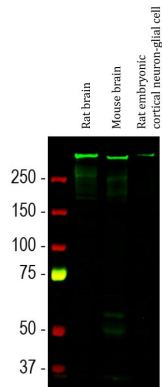
ARG10719 anti-MAP2ab antibody [4H5] ICC/IF image

Immunocytochemistry: Rat mixed neuron and glia cultures stained with ARG10719 anti-MAP2ab antibody [4H5] (green) and co-stained with rabbit antibody to neurofilament NF-H (red); DNA (blue). ARG10719 anti-MAP2ab antibody [4H5] reveals strong cytoplasmic staining for of dendrites and perikarya, which does not overlap with the NF-H antibody, which primarily binds to axons.



ARG10719 anti-MAP2ab antibody [4H5] WB image

Western blot: Rat brain extract stained with ARG10719 anti-MAP2ab antibody [4H5].



ARG10719 anti-MAP2ab antibody [4H5] WB image

Western blot: Rat brain, Mouse brain and Rat embryonic cortical neuron-glia cell lysates stained with ARG10719 anti-MAP2ab antibody [4H5] (green) at 1:10000 dilution.