

ARG10726 anti-Peripherin antibody

Package: 50 µl
Store at: -20°C

Summary

Product Description	Rabbit Polyclonal antibody recognizes Peripherin
Tested Reactivity	Hu, Ms, Rat, Cow, Pig
Tested Application	ICC/IF, IHC-Fr, WB
Host	Rabbit
Clonality	Polyclonal
Isotype	IgG
Target Name	Peripherin
Antigen Species	Human
Immunogen	Recombinant Human peripherin expressed in and purified from E. coli.
Conjugation	Un-conjugated
Alternate Names	Peripherin; NEF4; PRPH1; Neurofilament 4

Application Instructions

Application table	Application	Dilution
	ICC/IF	1:2000
	IHC-Fr	1:2000
	WB	1:1000 - 1:2000
Application Note	* The dilutions indicate recommended starting dilutions and the optimal dilutions or concentrations should be determined by the scientist.	
Calculated Mw	54 kDa	

Properties

Form	Liquid
Purification	Unpurified.
Buffer	Serum.
Storage instruction	For continuous use, store undiluted antibody at 2-8°C for up to a week. For long-term storage, aliquot and store at -20°C or below. Storage in frost free freezers is not recommended. Avoid repeated freeze/thaw cycles. Suggest spin the vial prior to opening. The antibody solution should be gently mixed before use.
Note	For laboratory research only, not for drug, diagnostic or other use.

Bioinformation

Database links [GeneID: 24688 Rat](#)
[GeneID: 5630 Human](#)
[Swiss-port # P41219 Human](#)

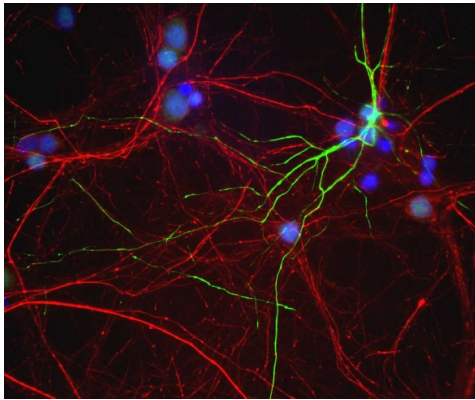
Gene Symbol PRPH

Gene Full Name peripherin

Background This gene encodes a cytoskeletal protein found in neurons of the peripheral nervous system. The encoded protein is a type III intermediate filament protein with homology to other cytoskeletal proteins such as desmin, and is a different protein that the peripherin found in photoreceptors. Mutations in this gene have been associated with susceptibility to amyotrophic lateral sclerosis. [provided by RefSeq, Jul 2008]

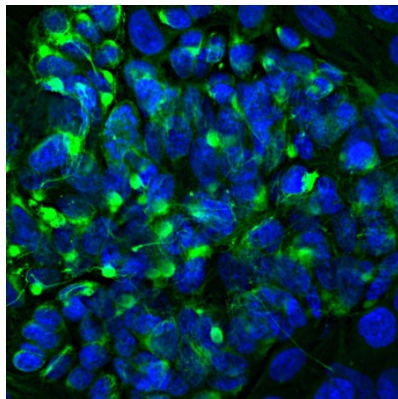
Function Class-III neuronal intermediate filament protein. [UniProt]

Images



ARG10726 anti-Peripherin antibody ICC/IF image

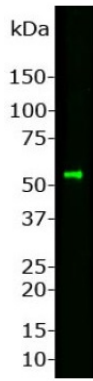
Immunocytochemistry: Mixed neuron / glia cultures from newborn Rat brain stained with ARG10726 anti-Peripherin antibody (green) and co-stained with chicken polyclonal antibody to NF-H (red). A class of large neurons, like the one at the top right of this image, contain peripherin, while the majority of neurons and their processes contain NF-H and not peripherin. The blue channel reveals the localization of DNA.



ARG10726 anti-Peripherin antibody ICC/IF image

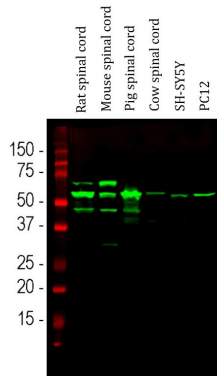
Immunofluorescence: PC-12 cells stained with ARG10726 anti-Peripherin antibody (green) at 1:2000 dilution. Hoechst (blue) for nuclear staining.

Peripherin, one of the Class III family of intermediate filament subunit proteins, is a major component of the PC-12 cell forming a perinuclear cap, with some filaments visible in the cytoplasm.



ARG10726 anti-Peripherin antibody WB image

Western blot: Whole Rat spinal cord homogenate stained with ARG10726 anti-Peripherin antibody at 1:1000 dilution. A prominent band running with an apparent SDS-PAGE molecular weight of ~57 kDa corresponds to Peripherin.



ARG10726 anti-Peripherin antibody WB image

Western blot: Rat spinal cord, Mouse spinal cord, Pig spinal cord, Cow spinal cord, SH-SY5Y and PC12 cell lysates stained with ARG10726 anti-Peripherin antibody (green) at 1:10000 dilution.

The major band at ~ 57 kDa corresponds to the major peripherin protein isoform, while other bands presumably represent protein products of alternate transcripts of the peripherin gene.