

ARG10741 anti-Lys20 / Lys21 antibody [31F5]

Package: 100 µl
Store at: -20°C

Summary

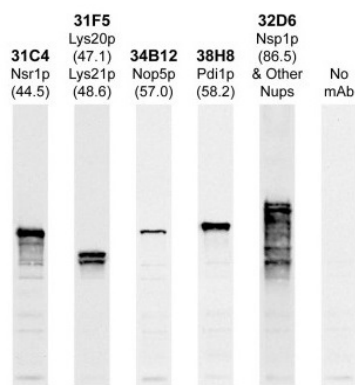
Product Description	Mouse Monoclonal antibody [31F5] recognizes Lys20 / Lys21
Tested Reactivity	Yeast
Tested Application	ICC/IF, IHC-Fr, WB
Host	Mouse
Clonality	Monoclonal
Clone	31F5
Isotype	IgG1
Target Name	Lys20 / Lys21
Species	Yeast
Immunogen	Generated from sequences of yeast Lys20 and Lys21.
Conjugation	Un-conjugated

Application Instructions

Application table	Application	Dilution
	ICC/IF	1:1000 - 1:10000
	IHC-Fr	1:1000 - 1:10000
	WB	1:10000 - 1:50000
Application Note	* The dilutions indicate recommended starting dilutions and the optimal dilutions or concentrations should be determined by the scientist.	

Properties

Form	Liquid
Purification	Unpurified.
Buffer	Tissue culture supernatant.
Storage instruction	For continuous use, store undiluted antibody at 2-8°C for up to a week. For long-term storage, aliquot and store at -20°C or below. Storage in frost free freezers is not recommended. Avoid repeated freeze/thaw cycles. Suggest spin the vial prior to opening. The antibody solution should be gently mixed before use.
Note	For laboratory research only, not for drug, diagnostic or other use.



ARG10741 anti-Lys20 / Lys21 antibody [31F5] WB image

Western blot: Whole yeast protein extracts with a collection of arigo's antibodies. The blot for ARG10741 anti-Lys20 / Lys21 antibody [31F5] is in the indicated lane (clone name), and the number indicates the SDS-PAGE molecular weight in kDa.