

ARG10751 anti-TAF15 antibody [4D71]

Package: 50 µl
Store at: -20°C

Summary

Product Description	Mouse Monoclonal antibody [4D71] recognizes TAF15
Tested Reactivity	Hu, Ms
Tested Application	ICC/IF, IHC-Fr, WB
Host	Mouse
Clonality	Monoclonal
Clone	4D71
Isotype	IgG1
Target Name	TAF15
Antigen Species	Human
Immunogen	Full length recombinant Human TAF15 expressed in and purified from E. coli.
Conjugation	Un-conjugated
Alternate Names	RBP56; TATA-binding protein-associated factor 2N; RNA-binding protein 56; TAF2N; II; Npl3; TAF; TAFII68; 68 kDa TATA-binding protein-associated factor

Application Instructions

Application table	Application	Dilution
	ICC/IF	1:500 - 1:1000
	IHC-Fr	1:500 - 1:1000
	WB	1:1000
Application Note	* The dilutions indicate recommended starting dilutions and the optimal dilutions or concentrations should be determined by the scientist.	
Calculated Mw	62 kDa	

Properties

Form	Liquid
Purification	Affinity purification.
Buffer	PBS and 50% Glycerol.
Stabilizer	50% Glycerol
Concentration	1 mg/ml
Storage instruction	For continuous use, store undiluted antibody at 2-8°C for up to a week. For long-term storage, aliquot and store at -20°C. Storage in frost free freezers is not recommended. Avoid repeated freeze/thaw cycles. Suggest spin the vial prior to opening. The antibody solution should be gently mixed before use.

Note

For laboratory research only, not for drug, diagnostic or other use.

Bioinformation

Database links

[GeneID: 8148 Human](#)

[Swiss-port # Q92804 Human](#)

Gene Symbol

TAF15

Gene Full Name

TAF15 RNA polymerase II, TATA box binding protein (TBP)-associated factor, 68kDa

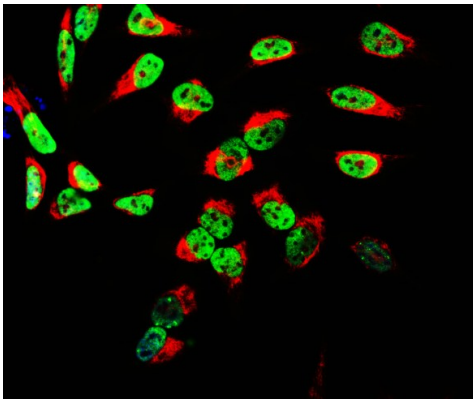
Background

This gene encodes a member of the TET family of RNA-binding proteins. The encoded protein plays a role in RNA polymerase II gene transcription as a component of a distinct subset of multi-subunit transcription initiation factor TFIID complexes. Translocations involving this gene play a role in acute leukemia and extraskeletal myxoid chondrosarcoma, and mutations in this gene may play a role in amyotrophic lateral sclerosis. Alternatively spliced transcript variants encoding multiple isoforms have been observed for this gene. [provided by RefSeq, May 2012]

Function

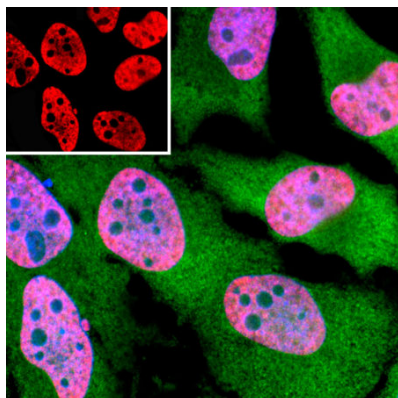
RNA and ssDNA-binding protein that may play specific roles during transcription initiation at distinct promoters. Can enter the preinitiation complex together with the RNA polymerase II (Pol II). [UniProt]

Images



ARG10751 anti-TAF15 antibody [4D71] ICC/IF image

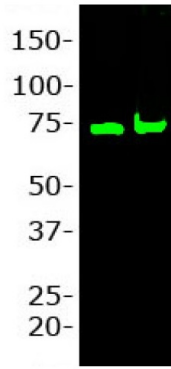
Immunocytochemistry: HeLa cell cultures stained with ARG10751 anti-TAF15 antibody [4D71] (green) and co-stained with chicken antibody to vimentin (red). ARG10751 anti-TAF15 antibody [4D71] reveals a granular nuclear localization typical of many RNA associated proteins. Blue is a DNA stain.



ARG10751 anti-TAF15 antibody [4D71] ICC/IF image

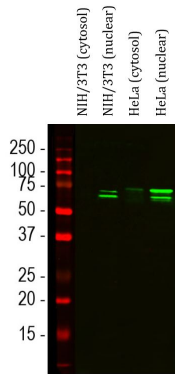
Immunofluorescence: HeLa cells stained with ARG10751 anti-TAF15 antibody [4D71] (red) at 1:500 dilution and costained with Rabbit pAb to GAPDH (green) at 1:1000 dilution. Hoechst (blue) for nuclear staining.

Clone 4D71 reveals TAF15 protein expressed exclusively in the nuclei of the cells, while GAPDH antibody produces strong cytoplasmic staining.



ARG10751 anti-TAF15 antibody [4D71] WB image

Western blot: 20 µg of 1) HeLa, and 2) Hek293 cell lysates stained with ARG10751 anti-TAF15 antibody [4D71] at 1: 1000 dilution.



ARG10751 anti-TAF15 antibody [4D71] WB image

Western blot: NIH/3T3 (cytosol), NIH/3T3 (nuclear), HeLa (cytosol) and HeLa (nuclear). The blots were stained with ARG10751 anti-TAF15 antibody [4D71] (green) at 1:1000 dilution.