

**ARG10755**  
anti-GFP antibodyPackage: 50 µl  
Store at: -20°C

### Summary

Product Description	Chicken Polyclonal Antibody to GFP
Tested Reactivity	Other
Tested Application	ICC/IF, IHC-Fr, WB
Host	Chicken
Clonality	Polyclonal
Isotype	IgY
Target Name	GFP
Antigen Species	Others
Immunogen	Prot-aceGFP recombinant protein.
Conjugation	Un-conjugated

### Application Instructions

Application table	Application	Dilution
	ICC/IF	1:1000 - 1:5000
	IHC-Fr	1:1000 - 1:5000
	WB	1:1000 - 1:5000
Application Note	* The dilutions indicate recommended starting dilutions and the optimal dilutions or concentrations should be determined by the scientist.	

### Properties

Form	Liquid
Purification	Affinity purification.
Buffer	PBS and 50% Glycerol.
Stabilizer	50% Glycerol
Concentration	1 mg/ml
Storage instruction	For continuous use, store undiluted antibody at 2-8°C for up to a week. For long-term storage, aliquot and store at -20°C. Storage in frost free freezers is not recommended. Avoid repeated freeze/thaw cycles. Suggest spin the vial prior to opening. The antibody solution should be gently mixed before use.
Note	For laboratory research only, not for drug, diagnostic or other use.

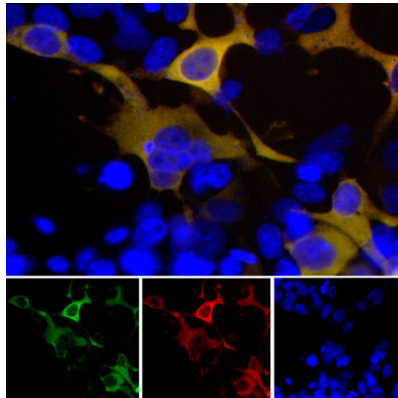
### Bioinformation

Images



ARG10755 anti-GFP antibody ICC/IF image

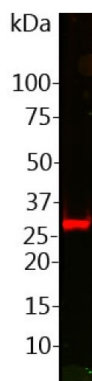
Immunocytochemistry: Transfected Hek293 cells which overexpressed GFP-fusion protein fused to a nuclear localization sequence were stained with ARG10755 anti-GFP antibody (red). Most Hek293 cells are not transfected so only the nucleus of these cells can be visualized with a blue DNA stain. Cells which are transfected with GFP are bright green. Red antibody staining is only seen in cells which express GFP, as expected, and the superimposition of green and red results in an orange signal.



ARG10755 anti-GFP antibody ICC/IF image

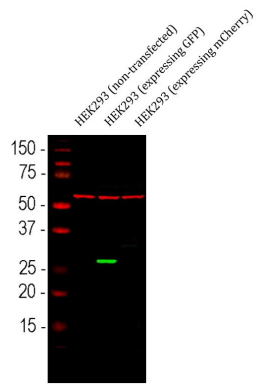
Immunofluorescence: Transfected HEK293 cells with a GFP fusion protein construct (green), and stained with ARG10755 anti-GFP antibody (red) at 1:1000 dilution. DAPI (blue) for nuclear staining.

The GFP antibody reveals GFP protein expressed only in transfected cells, and as a result these cells appear golden yellow in color. Top, merged image, bottom individual channels.



ARG10755 anti-GFP antibody WB image

Western blot: HEK293 cells transfected with pFin-EF1-GFP vector. This vector expresses full length GFP and crude homogenate from these cells was stained with ARG10755 anti-GFP antibody.



### ARG10755 anti-GFP antibody WB image

Western blot: 1) HEK293 (non-transfected), 2) HEK293 transfected with a GFP construct and 3) HEK293 transfected with an mCherry construct. The blots were stained with ARG10755 anti-GFP antibody (green) at 1:1000 dilution. The blot was simultaneously stained with [ARG10757](#) anti-Hsp 60 antibody (red) at 1:10000 dilution.