

ARG10760 anti-mCherry antibody

Package: 50 µl
Store at: -20°C

Summary

Product Description	Rabbit Polyclonal Antibody to mCherry red fluorescent protein
Tested Reactivity	Other
Tested Application	ICC/IF, IHC-Fr, WB
Specificity	This antibody also reacts to tdTomato protein.
Host	Rabbit
Clonality	Polyclonal
Isotype	IgG
Target Name	mCherry
Antigen Species	Others
Immunogen	Full length recombinant protein.
Conjugation	Un-conjugated

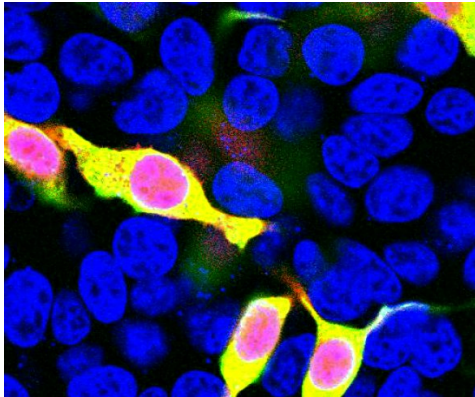
Application Instructions

Application table	Application	Dilution
	ICC/IF	1:500
	IHC-Fr	1:500
	WB	1:1000

Application Note * The dilutions indicate recommended starting dilutions and the optimal dilutions or concentrations should be determined by the scientist.

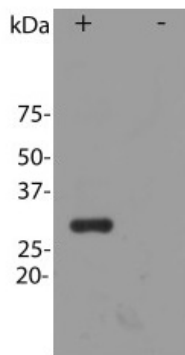
Properties

Form	Liquid
Purification	Affinity purification.
Buffer	PBS and 50% Glycerol.
Stabilizer	50% Glycerol
Concentration	1 mg/ml
Storage instruction	For continuous use, store undiluted antibody at 2-8°C for up to a week. For long-term storage, aliquot and store at -20°C. Storage in frost free freezers is not recommended. Avoid repeated freeze/thaw cycles. Suggest spin the vial prior to opening. The antibody solution should be gently mixed before use.
Note	For laboratory research only, not for drug, diagnostic or other use.



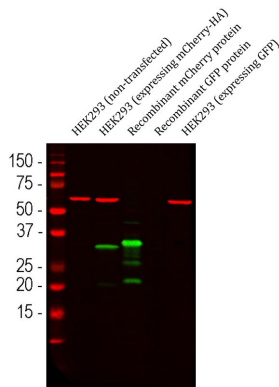
ARG10760 anti-mCherry antibody ICC/IF image

Immunocytochemistry: HEK293 cells transfected in the same way and viewed using a confocal microscope. Most HEK293 cells are not transfected so only the nucleus of these cells can be visualized with a blue DNA stain. Cells which are transfected with mCherry are red. Staining with ARG10760 anti-mCherry antibody is shown in Green. Green antibody staining is only seen in cells which express mCherry, as expected, and the superimposition of the green and red signals results in an orange signal. Interestingly, stronger mCherry staining is seen in the nucleus, possibly due to degradation of some mCherry molecules to release the low molecular weight mCherry fluorochrome.



ARG10760 anti-mCherry antibody WB image

Western blot: HEK293 cells transfected with pFin-EF1-mCherry vector ("+"), and HEK293 cells which were not transfected with this vector ("-"). The blots were stained with ARG10760 anti-mCherry antibody.



ARG10760 anti-mCherry antibody WB image

Western blot: 1) HEK293 (non-transfected), 2) HEK293 transfected with mCherry-HA construct, 3) Recombinant mCherry protein, 4) Recombinant GFP protein and 5) HEK293 transfected with a full length GFP construct. The blots were stained with ARG10760 anti-mCherry antibody (green) at 1:1000 dilution. The same blot was simultaneously stained with [ARG10757](#) anti-Hsp 60 antibody (red) at 1:5000 dilution.