

ARG10775 anti-Bestrophin 3 antibody

Package: 50 µg
Store at: -20°C

Summary

Product Description	Rabbit Polyclonal antibody recognizes Bestrophin 3
Tested Reactivity	Ms, Rat
Tested Application	Confocal, Dot, ELISA, ICC/IF, IHC-P, IP, WB
Host	Rabbit
Clonality	Polyclonal
Isotype	IgG
Target Name	Bestrophin 3
Species	Rat
Immunogen	Synthetic peptide taken within the last 50 aa (C-terminus) from Rat Bestrophin 3.
Conjugation	Un-conjugated
Alternate Names	VMD2L3; Bestrophin-3; Vitelliform macular dystrophy 2-like protein 3

Application Instructions

Application table	Application	Dilution
	Confocal	1:200
	Dot	1:10000
	ELISA	1:10000
	ICC/IF	1:200
	IHC-P	1:200
	IP	1:200
	WB	1:500 - 1:1000
Application Note	* The dilutions indicate recommended starting dilutions and the optimal dilutions or concentrations should be determined by the scientist.	

Properties

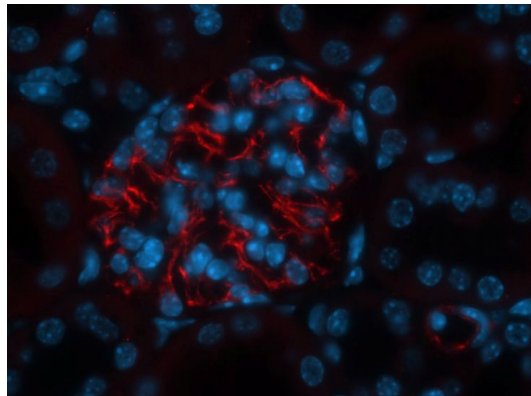
Form	Liquid
Purification	Affinity purified.
Buffer	Tris-Glycine Buffer (pH 7.4 - 7.8), Hepes, 0.02% Sodium azide, 30% Glycerol and 0.5% BSA.
Preservative	0.02% Sodium azide
Stabilizer	30% Glycerol and 0.5% BSA
Concentration	0.5 mg/ml

Storage instruction	For continuous use, store undiluted antibody at 2-8°C for up to a week. For long-term storage, aliquot and store at -20°C. Storage in frost free freezers is not recommended. Avoid repeated freeze/thaw cycles. Suggest spin the vial prior to opening. The antibody solution should be gently mixed before use.
Note	For laboratory research only, not for drug, diagnostic or other use.

Bioinformation

Database links	GeneID: 382427 Mouse Swiss-port # Q6H1V1 Mouse
Gene Symbol	Best3
Gene Full Name	bestrophin 3
Background	BEST3 belongs to the bestrophin family of anion channels, which includes BEST1 (MIM 607854), the gene mutant in vitelliform macular dystrophy (VMD; MIM 153700), and 2 other BEST1-like genes, BEST2 (MIM 607335) and BEST4 (MIM 607336). Bestrophins are transmembrane (TM) proteins that share a homology region containing a high content of aromatic residues, including an invariant arg-phe-pro (RFP) motif. The bestrophin genes share a conserved gene structure, with almost identical sizes of the 8 RFP-TM domain-encoding exons and highly conserved exon-intron boundaries. Each of the 4 bestrophin genes has a unique 3-prime end of variable length (Stohr et al., 2002 [PubMed 12032738]; Tsunenari et al., 2003 [PubMed 12907679]).[supplied by OMIM, Mar 2008]
Function	Forms calcium-sensitive chloride channels. Permeable to bicarbonate. [UniProt]
Calculated Mw	76 kDa

Images



ARG10775 anti-Bestrophin 3 antibody IHC-P image

Immunohistochemistry: PFA-fixed and paraffin-embedded Mouse glomerulus stained with ARG10775 anti-Bestrophin 3 antibody at 1:100 dilution. Incubation for 36 h at 4°C. Requires antigen retrieval.