

ARG10779
anti-DRD2 / Dopamine Receptor D2 antibodyPackage: 50 µg
Store at: -20°C

Summary

Product Description	Rabbit Polyclonal antibody recognizes DRD2 / Dopamine Receptor D2
Tested Reactivity	Ms, Rat
Tested Application	ELISA, ICC/IF, IHC-Fr, IP, WB
Host	Rabbit
Clonality	Polyclonal
Isotype	IgG
Target Name	DRD2 / Dopamine Receptor D2
Antigen Species	Rat
Immunogen	Synthetic peptide taken within aa. 150-200 from Rat DRD2 / Dopamine D2 receptor.
Conjugation	Un-conjugated
Alternate Names	D2R; D2DR; D(2) dopamine receptor; Dopamine D2 receptor

Application Instructions

Application table	Application	Dilution
	ELISA	1:50000
	ICC/IF	1:200
	IHC-Fr	1:200
	IP	1:200
	WB	1:1000 - 1:15000
Application Note	* The dilutions indicate recommended starting dilutions and the optimal dilutions or concentrations should be determined by the scientist.	
Calculated Mw	51 kDa	

Properties

Form	Liquid
Purification	Affinity purified.
Buffer	Tris-Glycine Buffer (pH 7.4 - 7.8), Hepes, 0.02% Sodium azide, 30% Glycerol and 0.5% BSA.
Preservative	0.02% Sodium azide
Stabilizer	30% Glycerol and 0.5% BSA
Concentration	0.75 mg/ml
Storage instruction	For continuous use, store undiluted antibody at 2-8°C for up to a week. For long-term storage, aliquot

and store at -20°C. Storage in frost free freezers is not recommended. Avoid repeated freeze/thaw cycles. Suggest spin the vial prior to opening. The antibody solution should be gently mixed before use.

Note

For laboratory research only, not for drug, diagnostic or other use.

Bioinformation

Database links

[GeneID: 13489 Mouse](#)

[GeneID: 24318 Rat](#)

[Swiss-port # P61168 Mouse](#)

[Swiss-port # P61169 Rat](#)

Gene Symbol

Drd2

Gene Full Name

dopamine receptor D2

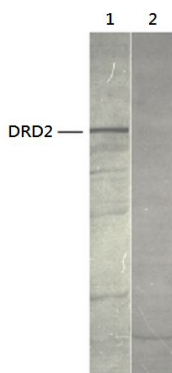
Background

This gene encodes the D2 subtype of the dopamine receptor. This G-protein coupled receptor inhibits adenylyl cyclase activity. A missense mutation in this gene causes myoclonus dystonia; other mutations have been associated with schizophrenia. Alternative splicing of this gene results in two transcript variants encoding different isoforms. A third variant has been described, but it has not been determined whether this form is normal or due to aberrant splicing. [provided by RefSeq, Jul 2008]

Function

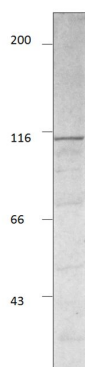
Dopamine receptor whose activity is mediated by G proteins which inhibit adenylyl cyclase. [UniProt]

Images



ARG10779 anti-DRD2 / Dopamine Receptor D2 antibody WB image

Western blot: 1) Recombinant Dopamine D2 receptor protein, and 2) cerebellar membranes stained with ARG10779 anti-DRD2 / Dopamine Receptor D2 antibody at 1:500 dilution.



ARG10779 anti-DRD2 / Dopamine Receptor D2 antibody WB image

Western blot: Rat striatal membranes stained with ARG10779 anti-DRD2 / Dopamine Receptor D2 antibody at 1:500 dilution.