

## ARG10786 anti-PDE10A antibody

Package: 50 µg  
Store at: -20°C

### Summary

Product Description	Rabbit Polyclonal antibody recognizes PDE10A
Tested Reactivity	Hu, Ms, Rat, Mk
Tested Application	Confocal, Dot, ELISA, ICC/IF, IHC-P, IP, WB
Host	Rabbit
Clonality	Polyclonal
Isotype	IgG
Target Name	PDE10A
Species	Human
Immunogen	Synthetic multiple antigenic peptide around the aa. 250-325 of Human PDE10A.
Conjugation	Un-conjugated
Alternate Names	HSPDE10A; cAMP and cAMP-inhibited cGMP 3',5'-cyclic phosphodiesterase 10A; EC 3.1.4.17; EC 3.1.4.35

### Application Instructions

Application table	Application	Dilution
	Confocal	1:100 - 1:150
	Dot	1:10000
	ELISA	1:10000
	ICC/IF	1:100 - 1:150
	IHC-P	1:100 - 1:150
	IP	1:200
	WB	1:500
	Application Note	* The dilutions indicate recommended starting dilutions and the optimal dilutions or concentrations should be determined by the scientist.

### Properties

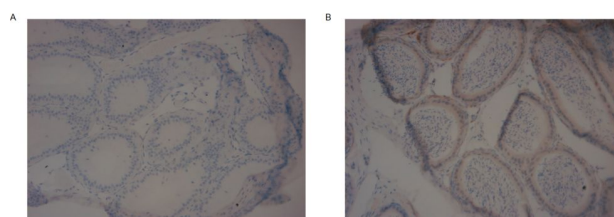
Form	Liquid
Purification	Affinity purified.
Buffer	Tris-Glycine Buffer (pH 7.4 - 7.8), Hepes, 0.02% Sodium azide, 30% Glycerol and 0.5% BSA.
Preservative	0.02% Sodium azide
Stabilizer	30% Glycerol and 0.5% BSA

Concentration	0.5 mg/ml
Storage instruction	For continuous use, store undiluted antibody at 2-8°C for up to a week. For long-term storage, aliquot and store at -20°C. Storage in frost free freezers is not recommended. Avoid repeated freeze/thaw cycles. Suggest spin the vial prior to opening. The antibody solution should be gently mixed before use.
Note	For laboratory research only, not for drug, diagnostic or other use.

## Bioinformation

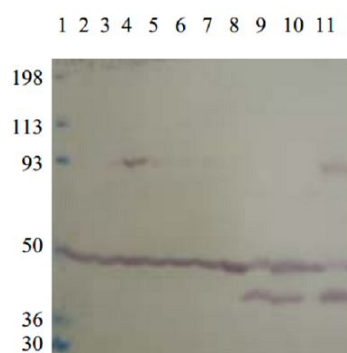
Gene Symbol	PDE10A
Gene Full Name	phosphodiesterase 10A
Background	The protein encoded by this gene belongs to the cyclic nucleotide phosphodiesterase family. It plays a role in signal transduction by regulating the intracellular concentration of cyclic nucleotides. This protein can hydrolyze both cAMP and cGMP to the corresponding nucleoside 5' monophosphate, but has higher affinity for cAMP, and is more efficient with cAMP as substrate. Alternatively spliced transcript variants have been described for this gene. [provided by RefSeq, Dec 2011]
Function	Plays a role in signal transduction by regulating the intracellular concentration of cyclic nucleotides. Can hydrolyze both cAMP and cGMP, but has higher affinity for cAMP and is more efficient with cAMP as substrate. [UniProt]
Calculated Mw	88 kDa
PTM	Isoform PDE10A2: Phosphorylated on Thr-16.

## Images



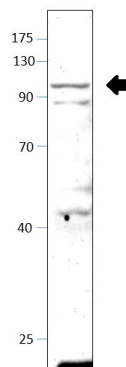
ARG10786 anti-PDE10A antibody IHC-P image

Immunohistochemistry: Paraffin-embedded Rat testis tissue section. A) Negative control, B) Stained with ARG10786 anti-PDE10A antibody at 1:200 dilution.



ARG10786 anti-PDE10A antibody WB image

Western blot: Rat samples: 1) frontal cortex, 2) parietal cortex, 3) striatum, 4) amygdala, 5) hypothalamus, 6) hippocampus, 7) olfactory bulb, 8) brain stem, 9) cerebellum, 10) spinal cord, and 11) whole brain lysates stained with ARG10786 anti-PDE10A antibody at 1:500 dilution.



#### ARG10786 anti-PDE10A antibody WB image

Western blot: Rat striatum lysates stained with ARG10786 anti-PDE10A antibody at 1:500 dilution.