

ARG10791 anti-PDE1A antibody

Package: 50 µg
Store at: -20°C

Summary

Product Description	Rabbit Polyclonal antibody recognizes PDE1A
Tested Reactivity	Hu, Ms, Rat
Tested Application	Confocal, Dot, ELISA, ICC/IF, IHC-P, IP, WB
Host	Rabbit
Clonality	Polyclonal
Isotype	IgG
Target Name	PDE1A
Species	Mouse
Immunogen	Synthetic peptide around aa. 1-50 from Mouse PDE1A protein. Common to all PDE1A variants.
Conjugation	Un-conjugated
Alternate Names	CAM-PDE-1A; Cam-PDE 1A; HCAM1; Calcium/calmodulin-dependent 3',5'-cyclic nucleotide phosphodiesterase 1A; EC 3.1.4.17; HSPDE1A; hCam-1; HCAM-1; 61 kDa Cam-PDE

Application Instructions

Application table	Application	Dilution
	Confocal	1:200
	Dot	1:10000
	ELISA	1:10000
	ICC/IF	1:200
	IHC-P	1:200
	IP	1:200
	WB	1:500 - 1:1000
	Application Note	* The dilutions indicate recommended starting dilutions and the optimal dilutions or concentrations should be determined by the scientist.

Properties

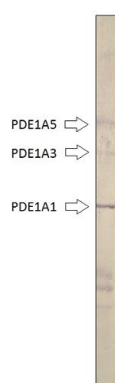
Form	Liquid
Purification	Affinity purified.
Buffer	Tris-Glycine Buffer (pH 7.4 - 7.8), Hepes, 0.02% Sodium azide, 30% Glycerol and 0.5% BSA.
Preservative	0.02% Sodium azide
Stabilizer	30% Glycerol and 0.5% BSA

Concentration	0.5 mg/ml
Storage instruction	For continuous use, store undiluted antibody at 2-8°C for up to a week. For long-term storage, aliquot and store at -20°C. Storage in frost free freezers is not recommended. Avoid repeated freeze/thaw cycles. Suggest spin the vial prior to opening. The antibody solution should be gently mixed before use.
Note	For laboratory research only, not for drug, diagnostic or other use.

Bioinformation

Database links	GeneID: 18573 Mouse GeneID: 5136 Human Swiss-port # P54750 Human Swiss-port # Q61481 Mouse
Gene Symbol	Pde1a
Gene Full Name	phosphodiesterase 1A, calmodulin-dependent
Background	Cyclic nucleotide phosphodiesterases (PDEs) play a role in signal transduction by regulating intracellular cyclic nucleotide concentrations through hydrolysis of cAMP and/or cGMP to their respective nucleoside 5-prime monophosphates. Members of the PDE1 family, such as PDE1A, are Ca(2+)/calmodulin (see CALM1; MIM 114180)-dependent PDEs (CaM-PDEs) that are activated by calmodulin in the presence of Ca(2+) (Michibata et al., 2001 [PubMed 11342109]; Fidock et al., 2002 [PubMed 11747989]).[supplied by OMIM, Oct 2009]
Function	Cyclic nucleotide phosphodiesterase with a dual-specificity for the second messengers cAMP and cGMP, which are key regulators of many important physiological processes. Has a higher affinity for cGMP than for cAMP. [UniProt]
Calculated Mw	61 kDa

Images



ARG10791 anti-PDE1A antibody WB image

Western blot: Recombinant PDE1A protein stained with ARG10791 anti-PDE1A antibody at 1:500 dilution.