

ARG10792 anti-PDE1B antibody

Package: 50 µg
Store at: -20°C

Summary

Product Description	Rabbit Polyclonal antibody recognizes PDE1B
Tested Reactivity	Hu, Ms, Rat
Tested Application	Confocal, Dot, ELISA, ICC/IF, IHC-P, IP, WB
Host	Rabbit
Clonality	Polyclonal
Isotype	IgG
Target Name	PDE1B
Species	Human
Immunogen	Synthetic peptide from Human PDE1B protein.
Conjugation	Un-conjugated
Alternate Names	Cam-PDE 1B; EC 3.1.4.17; 63 kDa Cam-PDE; PDES1B; Calcium/calmodulin-dependent 3',5'-cyclic nucleotide phosphodiesterase 1B; PDE1B1; HEL-S-79p

Application Instructions

Application table	Application	Dilution
	Confocal	1:50 - 1:200
	Dot	1:10000
	ELISA	1:10000
	ICC/IF	1:50 - 1:200
	IHC-P	1:50 - 1:200
	IP	1:200
	WB	1:500 - 1:1000
	Application Note	* The dilutions indicate recommended starting dilutions and the optimal dilutions or concentrations should be determined by the scientist.

Properties

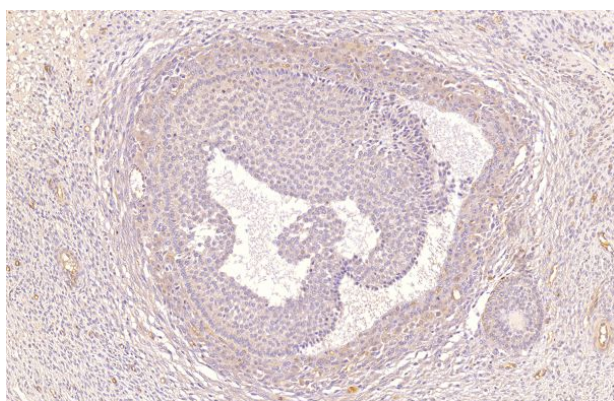
Form	Liquid
Purification	Affinity purified.
Buffer	Tris-Glycine Buffer (pH 7.4 - 7.8), Hepes, 0.02% Sodium azide, 30% Glycerol and 0.5% BSA.
Preservative	0.02% Sodium azide
Stabilizer	30% Glycerol and 0.5% BSA

Concentration	0.5 mg/ml
Storage instruction	For continuous use, store undiluted antibody at 2-8°C for up to a week. For long-term storage, aliquot and store at -20°C. Storage in frost free freezers is not recommended. Avoid repeated freeze/thaw cycles. Suggest spin the vial prior to opening. The antibody solution should be gently mixed before use.
Note	For laboratory research only, not for drug, diagnostic or other use.

Bioinformation

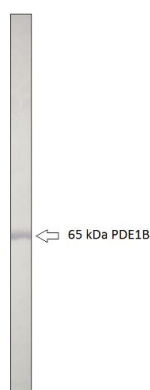
Gene Symbol	PDE1B
Gene Full Name	phosphodiesterase 1B, calmodulin-dependent
Background	The protein encoded by this gene belongs to the cyclic nucleotide phosphodiesterase (PDE) family, and PDE1 subfamily. Members of the PDE1 family are calmodulin-dependent PDEs that are stimulated by a calcium-calmodulin complex. This PDE has dual-specificity for the second messengers, cAMP and cGMP, with a preference for cGMP as a substrate. cAMP and cGMP function as key regulators of many important physiological processes. Alternatively spliced transcript variants encoding different isoforms have been described for this gene.[provided by RefSeq, Jul 2011]
Function	Cyclic nucleotide phosphodiesterase with a dual-specificity for the second messengers cAMP and cGMP, which are key regulators of many important physiological processes. Has a preference for cGMP as a substrate. [UniProt]
Calculated Mw	61 kDa. Multiple bands in the 65 - 72 kDa range all believed to be various PDE1B variants.

Images



ARG10792 anti-PDE1B antibody IHC-P image

Immunohistochemistry: Paraffin-embedded Human ovarian medulla tissue stained with ARG10792 anti-PDE1B antibody at 1:200 dilution.



ARG10792 anti-PDE1B antibody WB image

Western blot: Recombinant PDE1B protein stained with ARG10792 anti-PDE1B antibody at 1:500 dilution.