

ARG10794 anti-PDE2A antibody

Package: 50 µg
Store at: -20°C

Summary

Product Description	Rabbit Polyclonal antibody recognizes PDE2A
Tested Reactivity	Hu, Ms, Rat, Bov
Tested Application	Confocal, Dot, ELISA, FRET, ICC/IF, IHC-P, IHC-Wmt, IP, WB
Host	Rabbit
Clonality	Polyclonal
Isotype	IgG
Target Name	PDE2A
Species	Human
Immunogen	Synthetic peptide around the C-terminus of Human PDE2A.
Conjugation	Un-conjugated
Alternate Names	EC 3.1.4.17; CGS-PDE; PDE2A1; PED2A4; cGMP-dependent 3',5'-cyclic phosphodiesterase; Cyclic GMP-stimulated phosphodiesterase; cGSPDE

Application Instructions

Application table	Application	Dilution
	Confocal	1:250 - 1:1000
	Dot	1:10000
	ELISA	1:10000
	FRET	Assay-dependent
	ICC/IF	1:150 - 1:1000
	IHC-P	1:250 - 1:1000
	IHC-Wmt	Assay-dependent
	IP	1:200
	WB	1:250 - 1:1000
Application Note	* The dilutions indicate recommended starting dilutions and the optimal dilutions or concentrations should be determined by the scientist.	

Properties

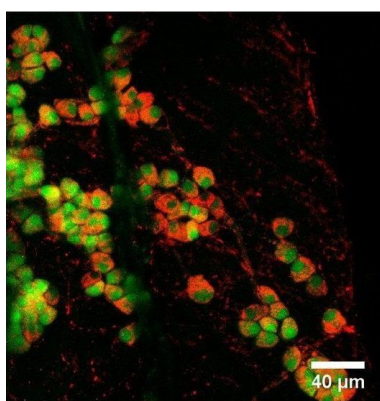
Form	Liquid
Purification	Affinity purified.
Buffer	Tris-Glycine Buffer (pH 7.4 - 7.8), Hepes, 0.02% Sodium azide, 30% Glycerol and 0.5% BSA.

Preservative	0.02% Sodium azide
Stabilizer	30% Glycerol and 0.5% BSA
Concentration	0.5 mg/ml
Storage instruction	For continuous use, store undiluted antibody at 2-8°C for up to a week. For long-term storage, aliquot and store at -20°C. Storage in frost free freezers is not recommended. Avoid repeated freeze/thaw cycles. Suggest spin the vial prior to opening. The antibody solution should be gently mixed before use.
Note	For laboratory research only, not for drug, diagnostic or other use.

Bioinformation

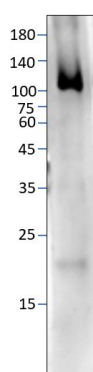
Gene Symbol	PDE2A
Gene Full Name	phosphodiesterase 2A, cGMP-stimulated
Function	Cyclic nucleotide phosphodiesterase with a dual-specificity for the second messengers cAMP and cGMP, which are key regulators of many important physiological processes.
Calculated Mw	Isoform PDE2A2: Regulates Mitochondrial cAMP Levels and Respiration. [UniProt] 106 kDa

Images



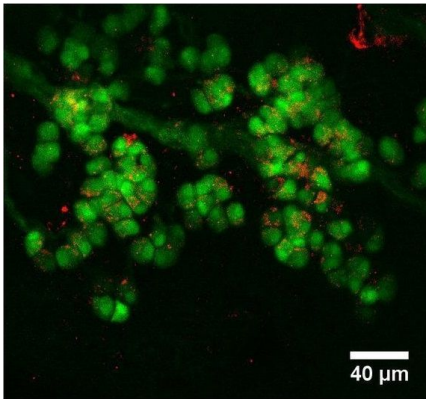
ARG10794 anti-PDE2A antibody IHC-Wmt image

Immunohistochemistry: Whole-mount Mouse nose stained with ARG10794 anti-PDE2A antibody (red). Green: Grueneberg ganglion neurons. Blue: Nuclei.



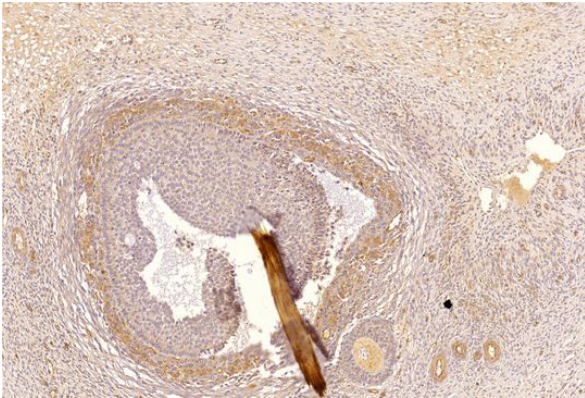
ARG10794 anti-PDE2A antibody WB image

Western blot: 10 ng of recombinant PDE2A stained with ARG10794 anti-PDE2A antibody at 1:500 dilution.



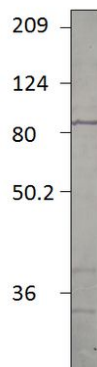
ARG10794 anti-PDE2A antibody IHC-Wmt image

Immunohistochemistry: Whole-mount Mouse nose stained with ARG10794 anti-PDE2A antibody (red). Green: Grueneberg ganglion neurons. Blue: Nuclei.



ARG10794 anti-PDE2A antibody IHC-P image

Immunohistochemistry: Paraffin-embedded Human ovarian medulla tissue stained with ARG10794 anti-PDE2A antibody at 1:1500 dilution.



ARG10794 anti-PDE2A antibody WB image

Western blot: Recombinant PDE2A protein stained with ARG10794 anti-PDE2A antibody at 1:500 dilution.