

ARG10797 anti-PDE3B antibody

Package: 50 µg
Store at: -20°C

Summary

Product Description	Rabbit Polyclonal antibody recognizes PDE3B
Tested Reactivity	Hu, Ms, Rat, Chk, Mk
Tested Application	Confocal, Dot, ELISA, ICC/IF, IHC-P, IP, WB
Host	Rabbit
Clonality	Polyclonal
Isotype	IgG
Target Name	PDE3B
Species	Human
Immunogen	Synthetic peptide taken within aa. 1060-1110 from Human PDE3B.
Conjugation	Un-conjugated
Alternate Names	EC 3.1.4.17; HcGIP1; cGIPDE1; CGIPDE1; CGI-PDE B; Cyclic GMP-inhibited phosphodiesterase B; cGMP-inhibited 3',5'-cyclic phosphodiesterase B; CGIP1

Application Instructions

Application table	Application	Dilution
	Confocal	1:250
	Dot	1:10000
	ELISA	1:10000
	ICC/IF	1:250
	IHC-P	1:250
	IP	1:200
	WB	1:500
	Application Note	* The dilutions indicate recommended starting dilutions and the optimal dilutions or concentrations should be determined by the scientist.

Properties

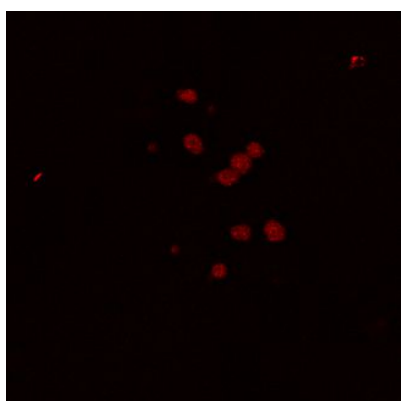
Form	Liquid
Purification	Affinity purified.
Buffer	Tris-Glycine Buffer (pH 7.4 - 7.8), Hepes, 0.02% Sodium azide, 30% Glycerol and 0.5% BSA.
Preservative	0.02% Sodium azide
Stabilizer	30% Glycerol and 0.5% BSA

Concentration	0.5 mg/ml
Storage instruction	For continuous use, store undiluted antibody at 2-8°C for up to a week. For long-term storage, aliquot and store at -20°C. Storage in frost free freezers is not recommended. Avoid repeated freeze/thaw cycles. Suggest spin the vial prior to opening. The antibody solution should be gently mixed before use.
Note	For laboratory research only, not for drug, diagnostic or other use.

Bioinformation

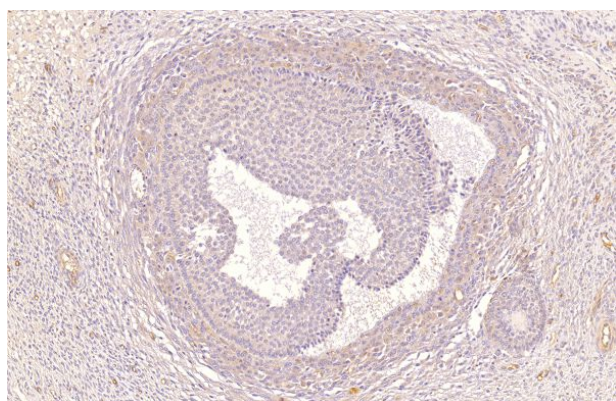
Gene Symbol	PDE3B
Gene Full Name	phosphodiesterase 3B, cGMP-inhibited
Function	Cyclic nucleotide phosphodiesterase with a dual-specificity for the second messengers cAMP and cGMP, which are key regulators of many important physiological processes. May play a role in fat metabolism. Regulates cAMP binding of RAPGEF3. Through simultaneous binding to RAPGEF3 and PIK3R6 assembles a signaling complex in which the PI3K gamma complex is activated by RAPGEF3 and which is involved in angiogenesis. [UniProt]
Calculated Mw	124 kDa

Images



ARG10797 anti-PDE3B antibody ICC/IF image

Immunofluorescence: COS1 cells stained with ARG10797 anti-PDE3B antibody at 1:100 dilution.



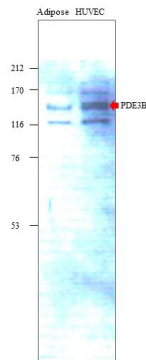
ARG10797 anti-PDE3B antibody IHC-P image

Immunohistochemistry: Paraffin-embedded Human ovarian medulla tissue stained with ARG10797 anti-PDE3B antibody at 1:200 dilution.



ARG10797 anti-PDE3B antibody WB image

Western blot: Recombinant PDE3B protein stained with ARG10797 anti-PDE3B antibody at 1:500 dilution.



ARG10797 anti-PDE3B antibody WB image

Western blot: Adipose and HUVEC cell lysates stained with ARG10797 anti-PDE3B antibody.