

ARG10799 anti-PDE4 antibody

Package: 50 µg
Store at: -20°C

Summary

| | |
|---------------------|--|
| Product Description | Rabbit Polyclonal antibody recognizes PDE4 |
| Tested Reactivity | Hu, Ms, Rat, Chk, Mk |
| Tested Application | Confocal, Dot, ELISA, ICC/IF, IHC, IP, WB |
| Host | Rabbit |
| Clonality | Polyclonal |
| Isotype | IgG |
| Target Name | PDE4 |
| Antigen Species | Human |
| Immunogen | Synthetic peptide with a sequence common to most PDE4 subtypes: PDE4A, PDE4D, PDE4B. |
| Conjugation | Un-conjugated |
| Alternate Names | DPDE2; cAMP-specific 3',5'-cyclic phosphodiesterase 4A; PDE4; PDE46; EC 3.1.4.53 |

Application Instructions

| Application table | Application | Dilution |
|-------------------|--|----------------|
| | Confocal | 1:200 |
| | Dot | 1:10000 |
| | ELISA | 1:10000 |
| | ICC/IF | 1:200 |
| | IHC | 1:200 |
| | IP | 1:200 |
| | WB | 1:500 - 1:1000 |
| Application Note | * The dilutions indicate recommended starting dilutions and the optimal dilutions or concentrations should be determined by the scientist. | |
| Calculated Mw | 98 kDa | |

Properties

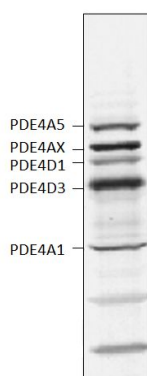
| | |
|--------------|---|
| Form | Liquid |
| Purification | Affinity purified. |
| Buffer | Tris-Glycine Buffer (pH 7.4 - 7.8), Hepes, 0.02% Sodium azide, 30% Glycerol and 0.5% BSA. |
| Preservative | 0.02% Sodium azide |
| Stabilizer | 30% Glycerol and 0.5% BSA |

| | |
|---------------------|---|
| Concentration | 0.62 mg/ml |
| Storage instruction | For continuous use, store undiluted antibody at 2-8°C for up to a week. For long-term storage, aliquot and store at -20°C. Storage in frost free freezers is not recommended. Avoid repeated freeze/thaw cycles. Suggest spin the vial prior to opening. The antibody solution should be gently mixed before use. |
| Note | For laboratory research only, not for drug, diagnostic or other use. |

Bioinformation

| | |
|----------------|---|
| Gene Symbol | PDE4A |
| Gene Full Name | phosphodiesterase 4A, cAMP-specific |
| Background | The protein encoded by this gene belongs to the cyclic nucleotide phosphodiesterase (PDE) family, and PDE4 subfamily. This PDE hydrolyzes the second messenger, cAMP, which is a regulator and mediator of a number of cellular responses to extracellular signals. Thus, by regulating the cellular concentration of cAMP, this protein plays a key role in many important physiological processes. Alternatively spliced transcript variants encoding different isoforms have been described for this gene.[provided by RefSeq, Jul 2011] |
| Function | Hydrolyzes the second messenger cAMP, which is a key regulator of many important physiological processes. [UniProt] |

Images



ARG10799 anti-PDE4 antibody WB image

Western blot: Rat cortical membranes stained with ARG10799 anti-PDE4 antibody at 1:500 dilution.