

ARG10800 anti-PDE4A antibody

Package: 50 µg
Store at: -20°C

Summary

Product Description	Rabbit Polyclonal antibody recognizes PDE4A
Tested Reactivity	Hu, Ms, Rat
Tested Application	Confocal, Dot, ELISA, ICC/IF, IHC-P, IP, WB
Host	Rabbit
Clonality	Polyclonal
Isotype	IgG
Target Name	PDE4A
Species	Human
Immunogen	Synthetic cyclic peptide around the C-terminus of PDE4A. Common to all PDE4A proteins.
Conjugation	Un-conjugated
Alternate Names	DPDE2; cAMP-specific 3',5'-cyclic phosphodiesterase 4A; PDE4; PDE46; EC 3.1.4.53

Application Instructions

Application table	Application	Dilution
	Confocal	1:100 - 1:400
	Dot	1:10000
	ELISA	1:10000
	ICC/IF	1:100 - 1:400
	IHC-P	1:100 - 1:400
	IP	1:250
	WB	1:1000 - 1:2500
	Application Note	* The dilutions indicate recommended starting dilutions and the optimal dilutions or concentrations should be determined by the scientist.

Properties

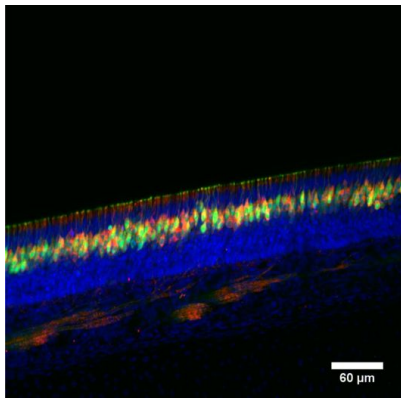
Form	Liquid
Purification	Affinity purified.
Buffer	Tris-Glycine Buffer (pH 7.4 - 7.8), Hepes, 0.02% Sodium azide, 30% Glycerol and 0.5% BSA.
Preservative	0.02% Sodium azide
Stabilizer	30% Glycerol and 0.5% BSA
Concentration	0.5 mg/ml

Storage instruction	For continuous use, store undiluted antibody at 2-8°C for up to a week. For long-term storage, aliquot and store at -20°C. Storage in frost free freezers is not recommended. Avoid repeated freeze/thaw cycles. Suggest spin the vial prior to opening. The antibody solution should be gently mixed before use.
Note	For laboratory research only, not for drug, diagnostic or other use.

Bioinformation

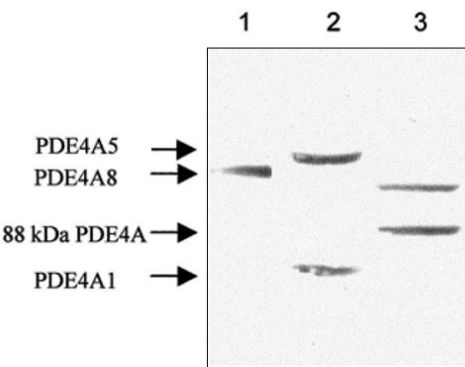
Gene Symbol	PDE4A
Gene Full Name	phosphodiesterase 4A, cAMP-specific
Background	The protein encoded by this gene belongs to the cyclic nucleotide phosphodiesterase (PDE) family, and PDE4 subfamily. This PDE hydrolyzes the second messenger, cAMP, which is a regulator and mediator of a number of cellular responses to extracellular signals. Thus, by regulating the cellular concentration of cAMP, this protein plays a key role in many important physiological processes. Alternatively spliced transcript variants encoding different isoforms have been described for this gene.[provided by RefSeq, Jul 2011]
Function	Hydrolyzes the second messenger cAMP, which is a key regulator of many important physiological processes. [UniProt]
Calculated Mw	98 kDa
PTM	Phosphorylation by MAPKAPK2 its activation through PKA phosphorylation (By similarity). Phosphorylated at Ser-686 and Ser-688 when expressed in S.frugiperda cells. Isoform 2 and isoform 7 are activated by phosphorylation at Ser-119 and Ser-123 respectively by PKA. Proteolytically cleaved by caspase-3.

Images



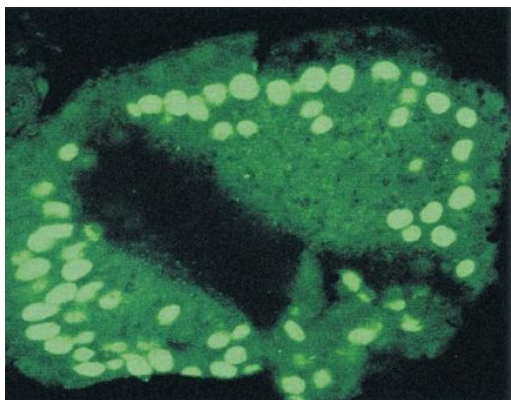
ARG10800 anti-PDE4A antibody IHC image

Immunohistochemistry: Thick section of Mouse nose tissue stained with ARG10800 anti-PDE4A antibody (red). Green: Olfactory sensory neurons. Blue: Nuclei.



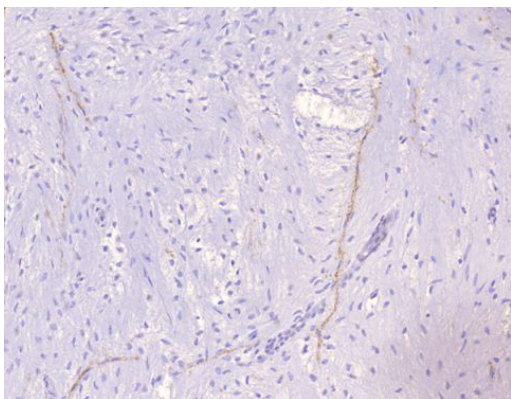
ARG10800 anti-PDE4A antibody WB image

Western blot: 1) Recombinant PDE4A8, 2) Recombinant PDE4A5 & PDE4A1, and 3) Rat testis lysates stained with ARG10800 anti-PDE4A antibody at 1:500 dilution.



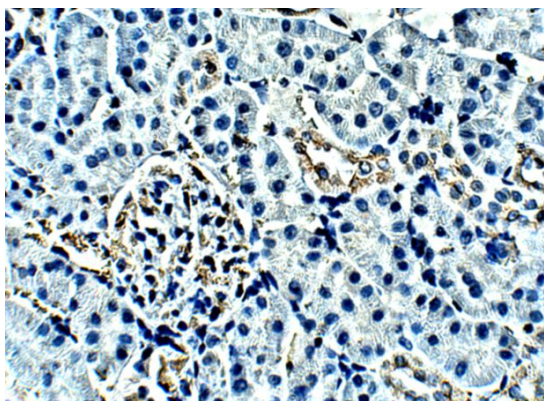
ARG10800 anti-PDE4A antibody Confocal image

Scanning laser confocal microscopy: Fixed section of Rat seminiferous tubule stained with ARG10800 anti-PDE4A antibody.



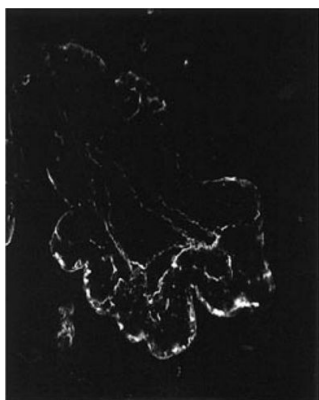
ARG10800 anti-PDE4A antibody IHC-P image

Immunohistochemistry: Paraffin-embedded Human ovarian medulla tissue stained with ARG10800 anti-PDE4A antibody.



ARG10800 anti-PDE4A antibody IHC-P image

Immunohistochemistry: Paraffin-embedded Rat kidney tissue stained with ARG10800 anti-PDE4A antibody at 1:100 dilution.



ARG10800 anti-PDE4A antibody IHC-Fr image

Immunohistochemistry: Frozen section of Rat seminiferous tubule stained with ARG10800 anti-PDE4A antibody.