

ARG10801 anti-PDE4B antibody

Package: 50 µg
Store at: -20°C

Summary

Product Description	Rabbit Polyclonal antibody recognizes PDE4B
Tested Reactivity	Hu, Ms, Rat
Tested Application	Confocal, Dot, ELISA, ICC/IF, IHC-Fr, IHC-P, IP, WB
Host	Rabbit
Clonality	Polyclonal
Isotype	IgG
Target Name	PDE4B
Antigen Species	Human
Immunogen	Synthetic peptide common to all PDE4B subtypes taken near the N-terminus region.
Conjugation	Un-conjugated
Alternate Names	cAMP-specific 3',5'-cyclic phosphodiesterase 4B; EC 3.1.4.53; PDEIVB; DPDE4; PDE32

Application Instructions

Application table	Application	Dilution
	Confocal	1:250
	Dot	1:10000
	ELISA	1:10000
	ICC/IF	1:250
	IHC-Fr	Assay-dependent
	IHC-P	1:250
	IP	1:350
	WB	1:500 - 1:1000
Application Note	* The dilutions indicate recommended starting dilutions and the optimal dilutions or concentrations should be determined by the scientist.	
Calculated Mw	83 kDa	

Properties

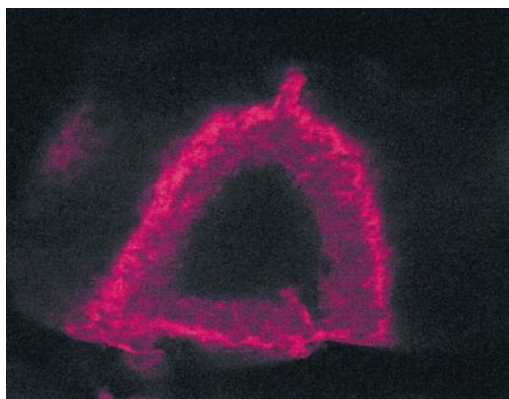
Form	Liquid
Purification	Affinity purified.
Buffer	Tris-Glycine Buffer (pH 7.4 - 7.8), HEPES, 0.02% Sodium azide, 30% Glycerol and 0.5% BSA.
Preservative	0.02% Sodium azide

Stabilizer	30% Glycerol and 0.5% BSA
Concentration	0.5 mg/ml
Storage instruction	For continuous use, store undiluted antibody at 2-8°C for up to a week. For long-term storage, aliquot and store at -20°C. Storage in frost free freezers is not recommended. Avoid repeated freeze/thaw cycles. Suggest spin the vial prior to opening. The antibody solution should be gently mixed before use.
Note	For laboratory research only, not for drug, diagnostic or other use.

Bioinformation

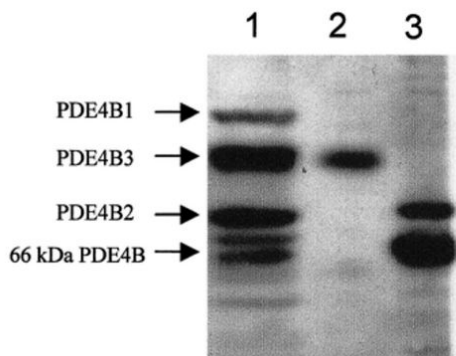
Database links	GeneID: 24626 Rat GeneID: 5142 Human Swiss-port # P14646 Rat Swiss-port # Q07343 Human
Gene Symbol	PDE4B
Gene Full Name	phosphodiesterase 4B, cAMP-specific
Background	This gene is a member of the type IV, cyclic AMP (cAMP)-specific, cyclic nucleotide phosphodiesterase (PDE) family. The encoded protein regulates the cellular concentrations of cyclic nucleotides and thereby play a role in signal transduction. Altered activity of this protein has been associated with schizophrenia and bipolar affective disorder. Alternative splicing and the use of alternative promoters results in multiple transcript variants encoding different isoforms. [provided by RefSeq, Jul 2014]
Function	Hydrolyzes the second messenger cAMP, which is a key regulator of many important physiological processes. May be involved in mediating central nervous system effects of therapeutic agents ranging from antidepressants to antiasthmatic and anti-inflammatory agents. [UniProt]

Images



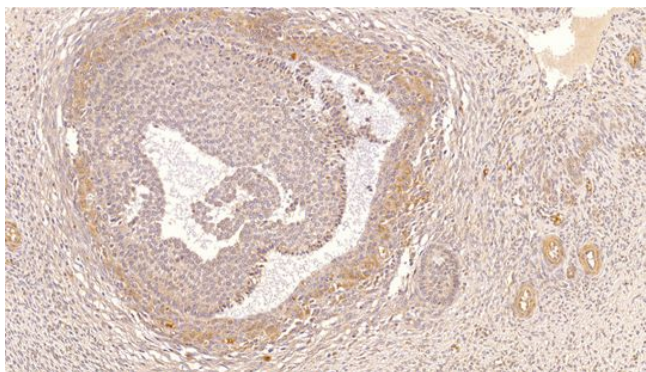
ARG10801 anti-PDE4B antibody IHC-Fr image

Immunohistochemistry: Frozen section of seminiferous tubule stained with ARG10801 anti-PDE4B antibody.



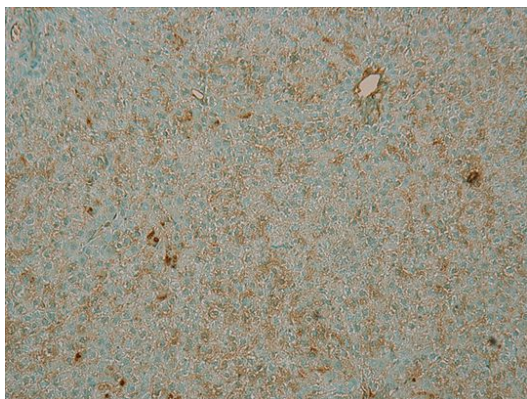
ARG10801 anti-PDE4B antibody WB image

Western blot: 1) Recombinant PDE4B variants, 2) Recombinant PDE4B3, and 3) Rat testis stained with ARG10801 anti-PDE4B antibody at 1:500 dilution.



ARG10801 anti-PDE4B antibody IHC-P image

Immunohistochemistry: Paraffin-embedded Human ovarian medulla tissue stained with ARG10801 anti-PDE4B antibody at 1:300 dilution.



ARG10801 anti-PDE4B antibody IHC-P image

Immunohistochemistry: Paraffin-embedded Human neuroblastoma (SHSY5Y) tissue stained with ARG10801 anti-PDE4B antibody at 1:250 dilution.