

## ARG10803 anti-PDE4D antibody

Package: 50 µg  
Store at: -20°C

### Summary

Product Description	Rabbit Polyclonal antibody recognizes PDE4D
Tested Reactivity	Hu, Ms, Rat
Tested Application	Confocal, Dot, ELISA, ICC/IF, IHC-P, IP, WB
Host	Rabbit
Clonality	Polyclonal
Isotype	IgG
Target Name	PDE4D
Antigen Species	Human
Immunogen	Synthetic cyclic peptide around the C-terminus of PDE4D protein.
Conjugation	Un-conjugated
Alternate Names	EC 3.1.4.53; STRK1; DPDE3; PDE43; ACRDYS2; PDE4DN2; cAMP-specific 3',5'-cyclic phosphodiesterase 4D; HSPDE4D

### Application Instructions

Application table	Application	Dilution
	Confocal	1:200
	Dot	1:10000
	ELISA	1:10000
	ICC/IF	Assay-dependent
	IHC-P	1:50
	IP	1:150
	WB	1:500
Application Note	* The dilutions indicate recommended starting dilutions and the optimal dilutions or concentrations should be determined by the scientist.	
Calculated Mw	91 kDa	

### Properties

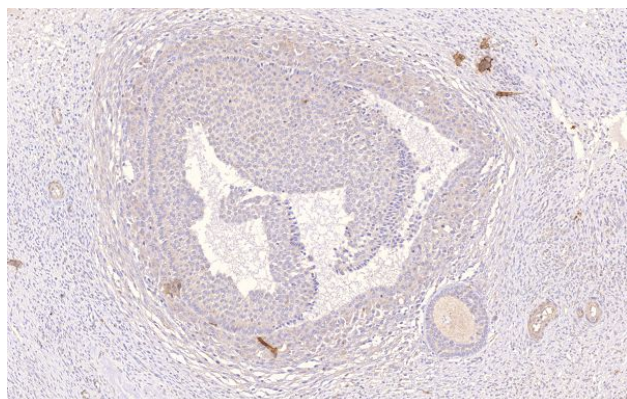
Form	Liquid
Purification	Affinity purified.
Buffer	Tris-Glycine Buffer (pH 7.4 - 7.8), Hepes, 0.02% Sodium azide, 30% Glycerol and 0.5% BSA.
Preservative	0.02% Sodium azide

Stabilizer	30% Glycerol and 0.5% BSA
Concentration	0.5 mg/ml
Storage instruction	For continuous use, store undiluted antibody at 2-8°C for up to a week. For long-term storage, aliquot and store at -20°C. Storage in frost free freezers is not recommended. Avoid repeated freeze/thaw cycles. Suggest spin the vial prior to opening. The antibody solution should be gently mixed before use.
Note	For laboratory research only, not for drug, diagnostic or other use.

## Bioinformation

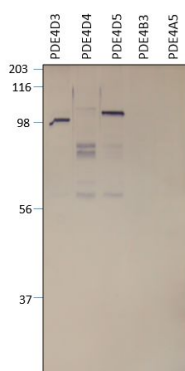
Gene Symbol	PDE4D
Gene Full Name	phosphodiesterase 4D, cAMP-specific
Background	This gene encodes one of four mammalian counterparts to the fruit fly 'dunce' gene. The encoded protein has 3',5'-cyclic-AMP phosphodiesterase activity and degrades cAMP, which acts as a signal transduction molecule in multiple cell types. This gene uses different promoters to generate multiple alternatively spliced transcript variants that encode functional proteins.[provided by RefSeq, Sep 2009]
Function	Hydrolyzes the second messenger cAMP, which is a key regulator of many important physiological processes. [UniProt]

## Images



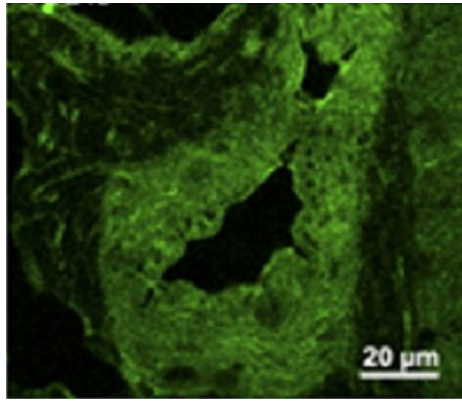
ARG10803 anti-PDE4D antibody IHC-P image

Immunohistochemistry: Paraffin-embedded Human ovarian medulla tissue stained with ARG10803 anti-PDE4D antibody at 1:50 dilution.



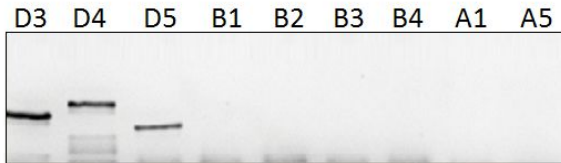
ARG10803 anti-PDE4D antibody WB image

Western blot: Recombinant PDE4 protein variants stained with ARG10803 anti-PDE4D antibody at 1:500 dilution.



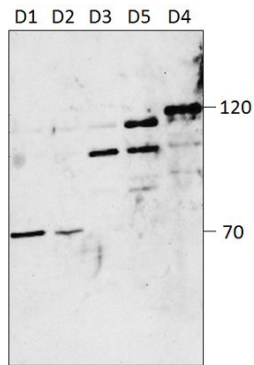
**ARG10803 anti-PDE4D antibody Confocal image**

Confocal laser microscopy: Abdominal skeletal muscle stained with ARG10803 anti-PDE4D antibody at 1:200 dilution.



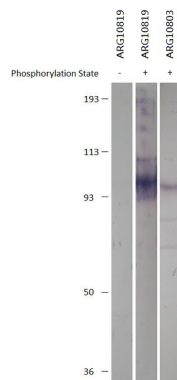
**ARG10803 anti-PDE4D antibody WB image**

Western blot: PDE4D, PDE4B and PDE4A variants stained with ARG10803 anti-PDE4D antibody at 1:1000 dilution.



**ARG10803 anti-PDE4D antibody WB image**

Western blot: Recombinant PDE4D variants (PDE4D1, PDE4D2, PDE4D3, PDE4D5, and PDE4D4) stained with ARG10803 anti-PDE4D antibody at 1:500 dilution. Apparent MW for D1 - D5 are 68, 70, 95, 119, and 105 kDa respectively.



**ARG10803 anti-PDE4D antibody WB image**

Western blot: non-phosphorylated and phosphorylated PDE4D protein stained with ARG10819 anti-PDE4D phospho (Ser190) antibody and ARG10803 anti-PDE4D antibody at 1:500 dilution.