

ARG10807 anti-PDE7A antibody

Package: 50 µg
Store at: -20°C

Summary

| | |
|---------------------|--|
| Product Description | Rabbit Polyclonal antibody recognizes PDE7A |
| Tested Reactivity | Hu, Ms, Rat |
| Tested Application | Dot, ELISA, IHC-P, IP, WB |
| Host | Rabbit |
| Clonality | Polyclonal |
| Isotype | IgG |
| Target Name | PDE7A |
| Species | Human |
| Immunogen | Synthetic cyclic peptide common to all PDE7A variants. |
| Conjugation | Un-conjugated |
| Alternate Names | PDE7; High affinity cAMP-specific 3',5'-cyclic phosphodiesterase 7A; EC 3.1.4.53; TM22; HCP1 |

Application Instructions

| Application table | Application | Dilution |
|-------------------|--|-----------------|
| | Dot | 1:10000 |
| | ELISA | 1:10000 |
| | IHC-P | Assay-dependent |
| | IP | 1:250 |
| | WB | 1:500 |
| Application Note | * The dilutions indicate recommended starting dilutions and the optimal dilutions or concentrations should be determined by the scientist. | |

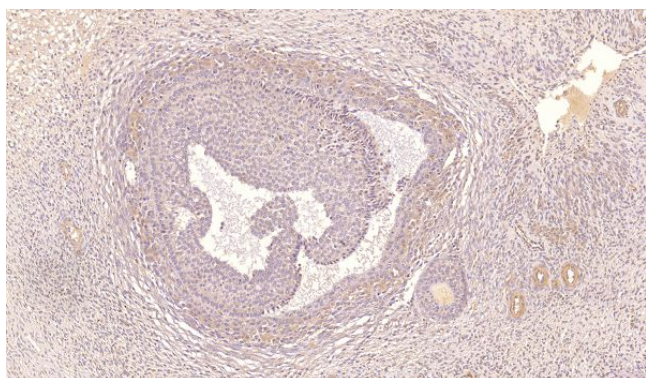
Properties

| | |
|---------------------|---|
| Form | Liquid |
| Purification | Affinity purified. |
| Buffer | Tris-Glycine Buffer (pH 7.4 - 7.8), Hepes, 0.02% Sodium azide, 30% Glycerol and 0.5% BSA. |
| Preservative | 0.02% Sodium azide |
| Stabilizer | 30% Glycerol and 0.5% BSA |
| Concentration | 0.5 mg/ml |
| Storage instruction | For continuous use, store undiluted antibody at 2-8°C for up to a week. For long-term storage, aliquot and store at -20°C. Storage in frost free freezers is not recommended. Avoid repeated freeze/thaw cycles. Suggest spin the vial prior to opening. The antibody solution should be gently mixed before use. |

Bioinformation

| | |
|----------------|--|
| Database links | GeneID: 18583 Mouse GeneID: 5150 Human Swiss-port # P70453 Mouse Swiss-port # Q13946 Human |
| Gene Symbol | PDE7A |
| Gene Full Name | phosphodiesterase 7A |
| Background | The protein encoded by this gene belongs to the cyclic nucleotide phosphodiesterase (PDE) family, and PDE7 subfamily. This PDE hydrolyzes the second messenger, cAMP, which is a regulator and mediator of a number of cellular responses to extracellular signals. Thus, by regulating the cellular concentration of cAMP, this protein plays a key role in many important physiological processes. Alternatively spliced transcript variants encoding different isoforms have been described for this gene. [provided by RefSeq, Jul 2011] |
| Function | Hydrolyzes the second messenger cAMP, which is a key regulator of many important physiological processes. May have a role in muscle signal transduction. [UniProt] |
| Calculated Mw | 56 kDa |

Images



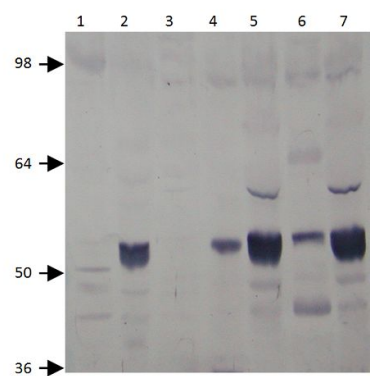
ARG10807 anti-PDE7A antibody IHC-P image

Immunohistochemistry: Paraffin-embedded Human ovarian medulla tissue stained with ARG10807 anti-PDE7A antibody at 1:200 dilution.



ARG10807 anti-PDE7A antibody WB image

Western blot: 1) SKNMBE, 2) MCF7, 3) Human testis, and 4) Rat testis stained with ARG10807 anti-PDE7A antibody.



ARG10807 anti-PDE7A antibody WB image

Western blot: 1) Lung, 2) Kidney, 3) Testis, 4) Pancreas, 5&7) Heart, and 6) Brain lysates stained with ARG10807 anti-PDE7A antibody at 1:500 dilution.