

## ARG10815 anti-PGCG antibody

Package: 50 µg  
Store at: -20°C

### Summary

Product Description	Rabbit Polyclonal antibody recognizes PGCG
Tested Reactivity	Hu, Ms, Rat
Tested Application	Confocal, Dot, ELISA, ICC/IF, IHC-Wmt, WB
Host	Rabbit
Clonality	Polyclonal
Isotype	IgG
Target Name	PGCG
Species	Rat
Immunogen	Synthetic peptide around the C-terminus of Rat PGCG protein.
Conjugation	Un-conjugated
Alternate Names	ksGC

### Application Instructions

Application table	Application	Dilution
	Confocal	1:200
	Dot	1:10000
	ELISA	1:10000
	ICC/IF	1:200
	IHC-Wmt	1:200
	WB	1:500
	Application Note <p>* The dilutions indicate recommended starting dilutions and the optimal dilutions or concentrations should be determined by the scientist.</p>	

### Properties

Form	Liquid
Purification	Affinity purified.
Buffer	Tris-Glycine Buffer (pH 7.4 - 7.8), Hepes, 0.02% Sodium azide, 30% Glycerol and 0.5% BSA.
Preservative	0.02% Sodium azide
Stabilizer	30% Glycerol and 0.5% BSA
Concentration	0.5 mg/ml
Storage instruction	For continuous use, store undiluted antibody at 2-8°C for up to a week. For long-term storage, aliquot

and store at -20°C. Storage in frost free freezers is not recommended. Avoid repeated freeze/thaw cycles. Suggest spin the vial prior to opening. The antibody solution should be gently mixed before use.

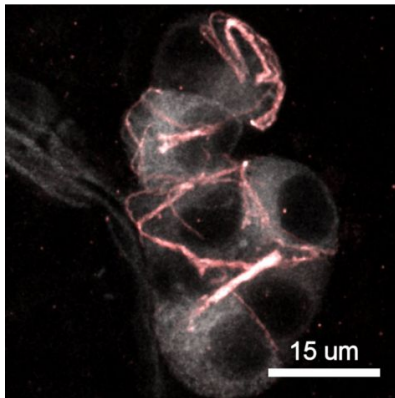
#### Note

For laboratory research only, not for drug, diagnostic or other use.

## Bioinformation

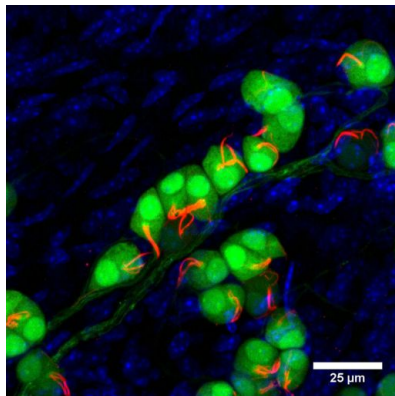
Gene Symbol	Gucy2g
Gene Full Name	guanylate cyclase 2G
Background	a novel soluble guanylyl cyclase; may be involved in cGMP synthesis [RGD, Feb 2006]
Function	Possible role in processes such as water and electrolyte balance, and muscle contraction. [Uniprot]
Calculated Mw	122 kDa

## Images



ARG10815 anti-PGCG antibody IHC image

Immunohistochemistry: Thick section of Mouse nose stained with ARG10815 anti-PGCG antibody (red). The antibody labels ciliated subcellular structures on the neurons. White/gray: Grueneberg ganglion neurons. .



ARG10815 anti-PGCG antibody IHC-Wmt image

Immunohistochemistry: Whole-mount Mouse nose stained with ARG10815 anti-PGCG antibody (red). Green: Grueneberg ganglion neurons. Blue: Nuclei.