

ARG10823 anti-MTF6 antibody

Package: 50 µl
Store at: -20°C

Summary

Product Description	Rabbit Polyclonal antibody recognizes MTF6
Tested Reactivity	Hu
Predict Reactivity	Ms, Rat, Cow, Dog, Goat, Gpig, Hrs, Rb, Sheep, Zfsh
Tested Application	IHC-P, WB
Host	Rabbit
Clonality	Polyclonal
Isotype	IgG
Target Name	MTF6
Species	Human
Immunogen	Synthetic peptide around the N-terminus of Human MYF6. (PGLQPPHCPGQCLIWACKTCKRKSAPTDRRKAATLRERRRLKKINEAFE)
Conjugation	Un-conjugated
Alternate Names	Muscle-specific regulatory factor 4; Myf-6; bHLHc4; myf-6; Class C basic helix-loop-helix protein 4; MRF4; Myogenic factor 6; CNM3

Application Instructions

Application table	Application	Dilution
	IHC-P	4 - 8 µg/ml
	WB	0.2 - 1 µg/ml
Application Note	* The dilutions indicate recommended starting dilutions and the optimal dilutions or concentrations should be determined by the scientist.	
Positive Control	Fetal heart.	

Properties

Form	Liquid
Purification	Affinity purified.
Buffer	PBS, 0.09% (w/v) Sodium azide and 2% Sucrose.
Preservative	0.09% (w/v) Sodium azide
Stabilizer	2% Sucrose
Concentration	Batch dependent: 0.5 - 1 mg/ml
Storage instruction	For continuous use, store undiluted antibody at 2-8°C for up to a week. For long-term storage, aliquot and store at -20°C or below. Storage in frost free freezers is not recommended. Avoid repeated freeze/thaw cycles. Suggest spin the vial prior to opening. The antibody solution should be gently mixed

before use.

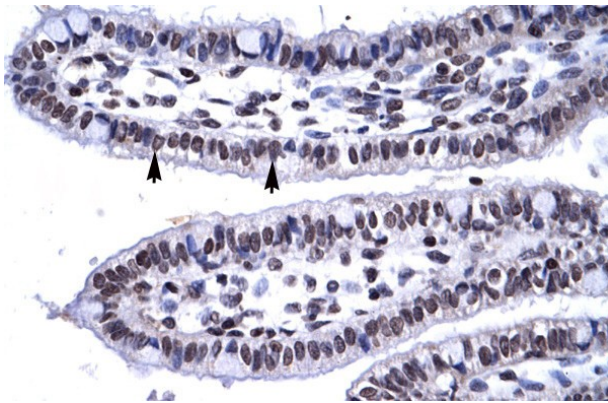
Note

For laboratory research only, not for drug, diagnostic or other use.

Bioinformation

Gene Symbol	MYF6
Gene Full Name	myogenic factor 6 (herculin)
Background	The protein encoded by this gene is a probable basic helix-loop-helix (bHLH) DNA binding protein involved in muscle differentiation. The encoded protein likely acts as a heterodimer with another bHLH protein. Defects in this gene are a cause of autosomal dominant centronuclear myopathy (ADCNM). [provided by RefSeq, May 2010]
Function	Involved in muscle differentiation (myogenic factor). Induces fibroblasts to differentiate into myoblasts. Probable sequence specific DNA-binding protein. [UniProt]
Calculated Mw	27 kDa

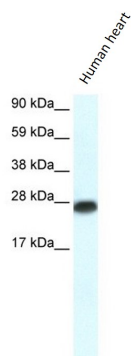
Images



ARG10823 anti-MTF6 antibody IHC-P image

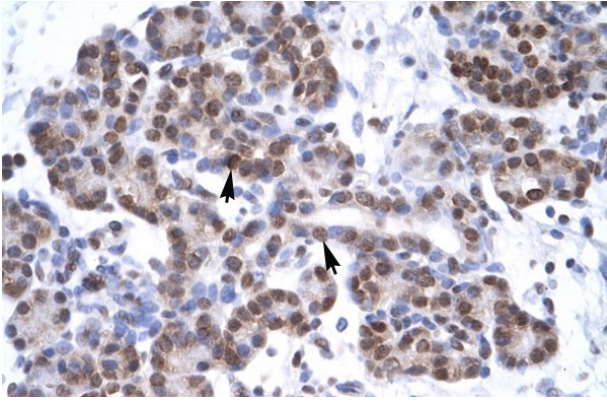
Immunohistochemistry: Paraffin-embedded Human intestine stained with ARG10823 anti-MTF6 antibody.

Magnification: 400X



ARG10823 anti-MTF6 antibody WB image

Western blot: Human heart lysate stained with ARG10823 anti-MTF6 antibody.



ARG10823 anti-MTF6 antibody IHC-P image

Immunohistochemistry: Paraffin-embedded Human pancreas stained with ARG10823 anti-MTF6 antibody.

Magnification: 400X