

ARG10826 anti-GSG1 antibody

Package: 50 µl
Store at: -20°C

Summary

| | |
|---------------------|--|
| Product Description | Rabbit Polyclonal antibody recognizes GSG1 |
| Tested Reactivity | Hu |
| Tested Application | WB |
| Host | Rabbit |
| Clonality | Polyclonal |
| Isotype | IgG |
| Target Name | GSG1 |
| Species | Human |
| Immunogen | Synthetic peptide around the C-terminus of Human GSG1. |
| Conjugation | Un-conjugated |
| Alternate Names | Germ cell-specific gene 1 protein |

Application Instructions

| | | |
|-------------------|--|---------------|
| Application table | Application | Dilution |
| | WB | 0.2 - 1 µg/ml |
| Application Note | * The dilutions indicate recommended starting dilutions and the optimal dilutions or concentrations should be determined by the scientist. | |
| Positive Control | WB: NTERA2 cell lysate. | |

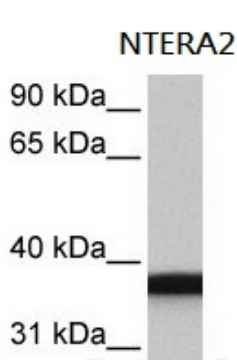
Properties

| | |
|---------------------|--|
| Form | Liquid |
| Purification | Affinity purification with immunogen. |
| Buffer | PBS, 0.09% (w/v) Sodium azide and 2% Sucrose. |
| Preservative | 0.09% (w/v) Sodium azide |
| Stabilizer | 2% Sucrose |
| Concentration | Batch dependent: 0.5 - 1 mg/ml |
| Storage instruction | For continuous use, store undiluted antibody at 2-8°C for up to a week. For long-term storage, aliquot and store at -20°C or below. Storage in frost free freezers is not recommended. Avoid repeated freeze/thaw cycles. Suggest spin the vial prior to opening. The antibody solution should be gently mixed before use. |
| Note | For laboratory research only, not for drug, diagnostic or other use. |

Bioinformation

| | |
|----------------|---|
| Gene Symbol | GSG1 |
| Gene Full Name | germ cell associated 1 |
| Function | May cause the redistribution of PAPOLB from the cytosol to the endoplasmic reticulum. [UniProt] |
| Calculated Mw | 39 kDa |

Images



ARG10826 anti-GSG1 antibody WB image

Western blot: NTERA2 cell lysate stained with ARG10826 anti-GSG1 antibody.