

ARG10851 anti-TPBG / 5T4 antibody [B3F1]

Package: 100 µg
Store at: -20°C

Summary

Product Description	Mouse Monoclonal antibody [B3F1] recognizes TPBG / 5T4. The mouse 5T4 monoclonal antibody, clone B3F1, defines the human 5T4 oncofoetal antigen, a highly glycosylated protein expressed by trophoblast and a few specialized adult epithelia. Up-regulation of 5T4 expression in some cancers is associated with poor clinical outcome; overexpression of human 5T4 cDNA in epithelial cells can alter their morphology and motility, supporting a role for such functions in cancer and development.
Tested Reactivity	Ms
Tested Application	ELISA, FACS, FuncSt, ICC/IF, WB
Host	Mouse
Clonality	Monoclonal
Clone	B3F1
Isotype	IgG2a
Target Name	TPBG / 5T4
Species	Mouse
Epitope	Distal LRR domain of m5T4
Conjugation	Un-conjugated
Alternate Names	5T4 oncofetal trophoblast glycoprotein; WAF1; 5T4; Trophoblast glycoprotein; 5T4AG; 5T4 oncofetal antigen; M6P1; 5T4 oncotrophoblast glycoprotein; Wnt-activated inhibitory factor 1

Application Instructions

Application table	Application	Dilution
	ELISA	Assay-dependent
	FACS	Assay-dependent
	FuncSt	Assay-dependent
	ICC/IF	Assay-dependent
	WB	Assay-dependent
Application Note	Functional study: This antibody inhibits the chemotactic migration towards CXCL12 exhibited by differentiating WT-ES cells. IC50 for the maximally inhibitory mAb B3F1 was 2.2 µg±0.8. * The dilutions indicate recommended starting dilutions and the optimal dilutions or concentrations should be determined by the scientist.	

Properties

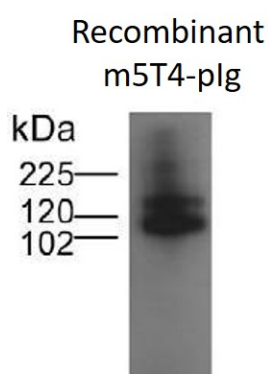
Form	Liquid
Purification	Purification with Protein A.
Buffer	PBS and 0.02% Sodium azide.

Preservative	0.02% Sodium azide
Storage instruction	For continuous use, store undiluted antibody at 2-8°C for up to a week. For long-term storage, aliquot and store at -20°C or below. Storage in frost free freezers is not recommended. Avoid repeated freeze/thaw cycles. Suggest spin the vial prior to opening. The antibody solution should be gently mixed before use.
Note	For laboratory research only, not for drug, diagnostic or other use.

Bioinformation

Gene Symbol	TPBG
Gene Full Name	trophoblast glycoprotein
Background	This gene encodes a leucine-rich transmembrane glycoprotein that may be involved in cell adhesion. The encoded protein is an oncofetal antigen that is specific to trophoblast cells. In adults this protein is highly expressed in many tumor cells and is associated with poor clinical outcome in numerous cancers. Alternate splicing in the 5' UTR results in multiple transcript variants that encode the same protein. [provided by RefSeq, Oct 2009]
Function	May function as an inhibitor of Wnt/beta-catenin signaling by indirectly interacting with LRP6 and blocking Wnt3a-dependent LRP6 internalization. [UniProt]
Calculated Mw	46 kDa
PTM	Highly glycosylated. [UniProt]

Images



ARG10851 anti-TPBG / 5T4 antibody [B3F1] WB image

Western blot: Recombinant m5T4-plg stained with ARG10851 anti-TPBG / 5T4 antibody [B3F1].