

ARG11052 anti-Connexin 32 antibody

Package: 50 µg
Store at: -20°C

Summary

Product Description	Rabbit Polyclonal antibody recognizes Connexin 32
Tested Reactivity	Hu, Ms, Rat
Tested Application	IHC-P, WB
Host	Rabbit
Clonality	Polyclonal
Isotype	IgG
Target Name	Connexin 32
Species	Human
Immunogen	Synthetic peptide around the middle region of Human Connexin 32 (RACARRAQRSSNPPSRK).
Conjugation	Un-conjugated
Alternate Names	CMTX1; CX32; Gap junction beta-1 protein; CMTX; Cx32; GAP junction 28 kDa liver protein; Connexin-32

Application Instructions

Application table	Application	Dilution
	IHC-P	1 - 5 µg/ml
	WB	0.5 - 1 µg/ml
Application Note	* The dilutions indicate recommended starting dilutions and the optimal dilutions or concentrations should be determined by the scientist.	
Observed Size	~ 32 kDa	

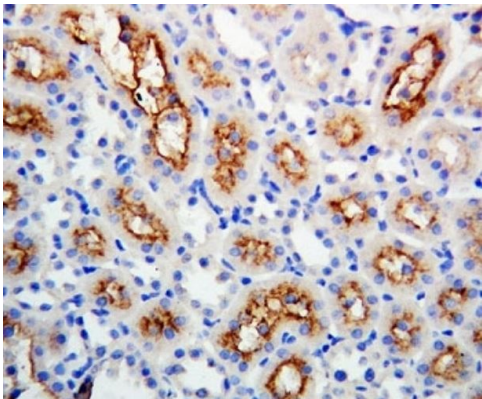
Properties

Form	Liquid
Purification	Affinity purification with immunogen.
Buffer	PBS, 0.025% Sodium azide and 2.5% BSA.
Preservative	0.025% Sodium azide
Stabilizer	2.5% BSA
Concentration	0.5 mg/ml
Storage instruction	For continuous use, store undiluted antibody at 2-8°C for up to a week. For long-term storage, aliquot and store at -20°C or below. Storage in frost free freezers is not recommended. Avoid repeated freeze/thaw cycles. Suggest spin the vial prior to opening. The antibody solution should be gently mixed before use.
Note	For laboratory research only, not for drug, diagnostic or other use.

Bioinformation

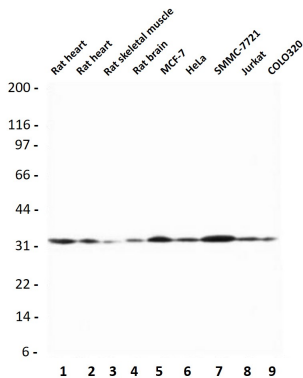
Gene Symbol	GJB1
Gene Full Name	gap junction protein, beta 1, 32kDa
Background	This gene encodes a member of the gap junction protein family. The gap junction proteins are membrane-spanning proteins that assemble to form gap junction channels that facilitate the transfer of ions and small molecules between cells. According to sequence similarities at the nucleotide and amino acid levels, the gap junction proteins are divided into two categories, alpha and beta. Mutations in this gene cause X-linked Charcot-Marie-Tooth disease, an inherited peripheral neuropathy. Alternatively spliced transcript variants encoding the same protein have been found for this gene. [provided by RefSeq, Oct 2008]
Function	One gap junction consists of a cluster of closely packed pairs of transmembrane channels, the connexons, through which materials of low MW diffuse from one cell to a neighboring cell. [UniProt]
Calculated Mw	32 kDa

Images



ARG11052 anti-Connexin 32 antibody IHC-P image

Immunohistochemistry: Paraffin-embedded Rat kidney tissue stained with ARG11052 anti-Connexin 32 antibody.



ARG11052 anti-Connexin 32 antibody WB image

Western blot: 1) Rat heart, 2) Rat heart, 3) Rat skeletal muscle, 4) Rat brain, 5) MCF-7, 6) HeLa, 7) SMMC-7721, 8) Jurkat and 9) COLO320 cell lysates stained with ARG11052 anti-Connexin 32 antibody.