

## ARG11115 anti-NSE / Neuron Specific Enolase antibody

Package: 50 µl  
Store at: -20°C

### Summary

Product Description	Chicken Polyclonal antibody recognizes NSE / Neuron Specific Enolase
Tested Reactivity	Hu, Ms, Rat, Cow
Tested Application	IHC-Fr, WB
Host	Chicken
Clonality	Polyclonal
Isotype	IgY
Target Name	NSE / Neuron Specific Enolase
Species	Human
Immunogen	Recombinant full-length Human NSE / Neuron Specific Enolase.
Conjugation	Un-conjugated
Alternate Names	Neural enolase; NSE; Enolase 2; Gamma-enolase; 2-phospho-D-glycerate hydro-lyase; HEL-S-279; Neuron-specific enolase; EC 4.2.1.11

### Application Instructions

Application table	Application	Dilution
	IHC-Fr	1:500 - 1:1000
	WB	1:5000 - 1:10000
Application Note	* The dilutions indicate recommended starting dilutions and the optimal dilutions or concentrations should be determined by the scientist.	
Observed Size	~ 45 kDa	

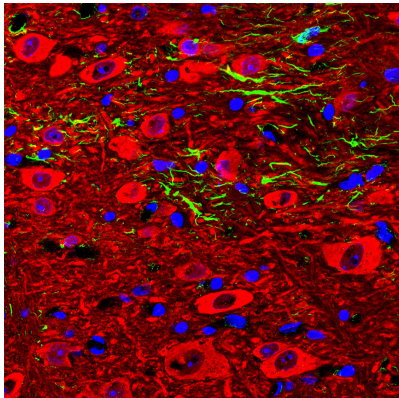
### Properties

Form	Liquid
Buffer	PBS and 5 mM Sodium azide.
Preservative	5 mM Sodium azide
Storage instruction	For continuous use, store undiluted antibody at 2-8°C for up to a week. For long-term storage, aliquot and store at -20°C or below. Storage in frost free freezers is not recommended. Avoid repeated freeze/thaw cycles. Suggest spin the vial prior to opening. The antibody solution should be gently mixed before use.
Note	For laboratory research only, not for drug, diagnostic or other use.

### Bioinformation

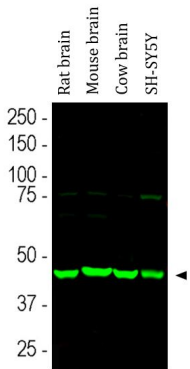
Gene Symbol	ENO2
Gene Full Name	enolase 2 (gamma, neuronal)
Background	This gene encodes one of the three enolase isoenzymes found in mammals. This isoenzyme, a homodimer, is found in mature neurons and cells of neuronal origin. A switch from alpha enolase to gamma enolase occurs in neural tissue during development in rats and primates. [provided by RefSeq, Jul 2008]
Function	Has neurotrophic and neuroprotective properties on a broad spectrum of central nervous system (CNS) neurons. Binds, in a calcium-dependent manner, to cultured neocortical neurons and promotes cell survival (By similarity). [UniProt]
Calculated Mw	47 kDa
Cellular Localization	Cytoplasm. Cell membrane. Note=Can translocate to the plasma membrane in either the homodimeric (alpha/alpha) or heterodimeric (alpha/gamma) form. [UniProt]

## Images



ARG11115 anti-NSE / Neuron Specific Enolase antibody IHC-Fr image

Immunohistochemistry: Frozen section of adult mouse cerebellar dentate nucleus stained with ARG11115 anti-NSE / Neuron Specific Enolase antibody (red) at 1:3000 dilution. The section was co-stained with anti-GFAP antibody (green) at 1:5000 dilution. Hoechst (blue) for nuclear staining. (Sample preparation: Following transcardial perfusion of mouse with 4% paraformaldehyde, brain was post fixed for 24 hours, cut to 45 μM, and free-floating sections were stained with above antibodies.).



ARG11115 anti-NSE / Neuron Specific Enolase antibody WB image

Western blot: Rat brain, Mouse brain, Cow brain and SH-SY5Y cell lysates stained with ARG11115 anti-NSE / Neuron Specific Enolase antibody at 1:5000 dilution.