

## ARG11147 anti-beta Synuclein antibody

Package: 50 µl  
Store at: -20°C

### Summary

Product Description	Rabbit Polyclonal antibody recognizes beta Synuclein
Tested Reactivity	Hu, Ms, Rat, Cow
Tested Application	IHC-Fr, WB
Host	Rabbit
Clonality	Polyclonal
Isotype	IgG
Target Name	beta Synuclein
Species	Human
Immunogen	Full-length Human recombinant beta Synuclein protein.
Conjugation	Un-conjugated
Alternate Names	Beta-synuclein

### Application Instructions

Application table	Application	Dilution
	IHC-Fr	1:1000 - 1:2000
	WB	1:1000 - 1:2000
Application Note	* The dilutions indicate recommended starting dilutions and the optimal dilutions or concentrations should be determined by the scientist.	
Observed Size	~ 18 kDa	

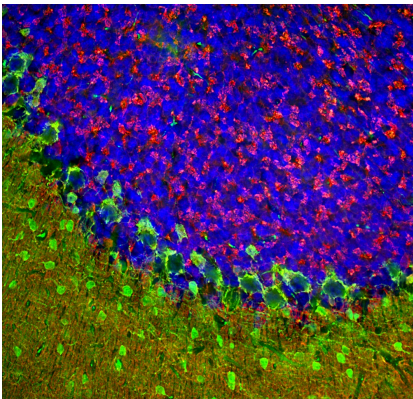
### Properties

Form	Liquid
Purification	Affinity purified.
Buffer	PBS, 5 mM Sodium azide and 50% Glycerol.
Preservative	5 mM Sodium azide
Stabilizer	50% Glycerol
Concentration	1 mg/ml
Storage instruction	For continuous use, store undiluted antibody at 2-8°C for up to a week. For long-term storage, aliquot and store at -20°C. Storage in frost free freezers is not recommended. Avoid repeated freeze/thaw cycles. Suggest spin the vial prior to opening. The antibody solution should be gently mixed before use.
Note	For laboratory research only, not for drug, diagnostic or other use.

Bioinformation

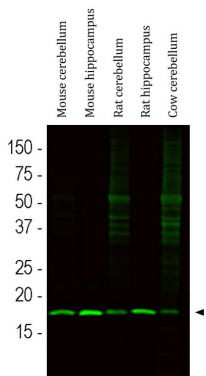
Gene Symbol	SNCB
Gene Full Name	synuclein, beta
Background	This gene encodes a member of a small family of proteins that inhibit phospholipase D2 and may function in neuronal plasticity. The encoded protein is abundant in lesions of patients with Alzheimer disease. A mutation in this gene was found in individuals with dementia with Lewy bodies. Alternative splicing results in multiple transcript variants. [provided by RefSeq, Dec 2015]
Function	Non-amyloid component of senile plaques found in Alzheimer disease. Could act as a regulator of SNCA aggregation process. Protects neurons from staurosporine and 6-hydroxy dopamine (6OHDA)-stimulated caspase activation in a p53/TP53-dependent manner. Contributes to restore the SNCA anti-apoptotic function abolished by 6OHDA. Not found in the Lewy bodies associated with Parkinson disease. [UniProt]
Calculated Mw	14 kDa
PTM	Phosphorylated. Phosphorylation by G-protein coupled receptor kinases (GRK) is more efficient than phosphorylation by CK1, CK2 and CaM-kinase II. [UniProt]
Cellular Localization	Cytoplasm. [UniProt]

Images



ARG11147 anti-beta Synuclein antibody IHC-Fr image

Immunohistochemistry: Frozen section of Rat cerebellum tissue stained with ARG11147 anti-beta Synuclein antibody (red) at 1:1000 dilution, and co-stained with [ARG10686](#) anti-Parvalbumin antibody (green) at 1:5000 dilution. Hoechst (blue) for nuclear staining. (Sample preparation: Following transcardial perfusion of rat with 4% paraformaldehyde, brain was post fixed for 24 hours, cut to 45 μM, and free-floating sections were stained with above antibodies.).



ARG11147 anti-beta Synuclein antibody WB image

Western blot: Mouse cerebellum, Mouse hippocampus, Rat cerebellum, Rat hippocampus and Cow cerebellum lysates stained with ARG11147 anti-beta Synuclein antibody at 1:1000 dilution.