

## ARG20001 anti-Caspase 3 antibody [C33]

Package: 50 µg, 25 µg  
Store at: -20°C

### Summary

Product Description	Mouse Monoclonal antibody [C33] recognizes Caspase 3
Tested Reactivity	Hu
Tested Application	WB
Specificity	The antibody recognizes both proform and the cleaved large fragment of caspase-3 in samples of human, mouse and rat origins.
Host	Mouse
Clonality	Monoclonal
Clone	C33
Isotype	IgG1
Target Name	Caspase 3
Species	Human
Immunogen	Recombinant human Caspase-3
Conjugation	Un-conjugated
Alternate Names	CASP3; Caspase 3; Apopain; CPP32; CPP32B; Caspase 3, Apoptosis-Related Cysteine Peptidase; Caspase 3, Apoptosis-Related Cysteine Protease; SREBP Cleavage Activity 1; Cysteine Protease CPP32; Protein Yama; EC 3.4.22.56; Caspase-3; CASP-3; CPP-32; SCA-1; Yama; PARP Cleavage Protease; Procaspase3; EC 3.4.22

### Application Instructions

Application table	Application	Dilution
	WB	0.5 - 4 µg/ml
Application Note	* The dilutions indicate recommended starting dilutions and the optimal dilutions or concentrations should be determined by the scientist.	

### Properties

Form	Liquid
Purification	Affinity Purified Antibody
Buffer	PBS, 50% Glycerol, 0.5 mg/ml BSA and 0.01% Thimerosal
Preservative	0.01% Thimerosal
Stabilizer	50% Glycerol, 0.5 mg/ml BSA
Concentration	0.2 mg/ml
Storage instruction	For continuous use, store undiluted antibody at 2-8°C for up to a week. For long-term storage, aliquot and store at -20°C. Storage in frost free freezers is not recommended. Avoid repeated freeze/thaw

cycles. Suggest spin the vial prior to opening. The antibody solution should be gently mixed before use.

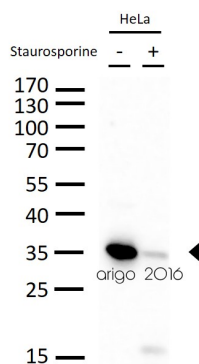
#### Note

For laboratory research only, not for drug, diagnostic or other use.

## Bioinformation

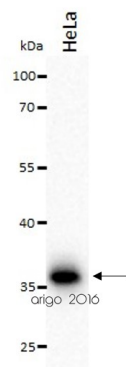
Database links	<a href="#">GeneID: 836 Human</a> <a href="#">Swiss-port # P42574 Human</a>
Gene Symbol	CASP3
Gene Full Name	caspase 3, apoptosis-related cysteine peptidase
Background	The protein encoded by this gene is a cysteine-aspartic acid protease that plays a central role in the execution-phase of cell apoptosis. The encoded protein cleaves and inactivates poly(ADP-ribose) polymerase while it cleaves and activates sterol regulatory element binding proteins as well as caspases 6, 7, and 9. This protein itself is processed by caspases 8, 9, and 10. It is the predominant caspase involved in the cleavage of amyloid-beta 4A precursor protein, which is associated with neuronal death in Alzheimer's disease. [provided by RefSeq, Aug 2017]
Function	Cleaves XRCC4 and phospholipid scramblase proteins XKR4, XKR8 and XKR9, leading to promote phosphatidylserine exposure on apoptotic cell surface. [UniProt]
Highlight	Related Antibody Duos and Panels: <a href="#">ARG30105 Apoptosis Marker Antibody Duo (Caspase3, PARP)</a> <a href="#">ARG30110 Mitochondria/Caspase dependant Apoptosis Antibody Panel (Caspase3, Caspase9, Cytochrome c, PARP) (WB)</a> Related products: <a href="#">Caspase 3 antibodies: Caspase 3 Duos / Panels: Anti-Mouse IgG secondary antibodies:</a>
Research Area	Cancer antibody; Cell Biology and Cellular Response antibody; Cell Death antibody; Neuroscience antibody; Apoptosis Marker antibody; Mitochondria/Caspase Dependant Apoptosis Marker antibody
Calculated Mw	32 kDa
PTM	Acetylation, Phosphoprotein, S-nitrosylation, Zymogen. [UniProt]
Cellular Localization	Cytoplasm. [UniProt]

## Images



ARG20001 anti-Caspase 3 antibody [C33] WB image

Western blot: 30 µg of HeLa cells untreated or treated with Staurosporine (1µM, overnight). The blots were stained with ARG20001 anti-Caspase 3 antibody [C33] at 1:500 dilution.



#### ARG20001 anti-Caspase 3 antibody [C33] WB image

Western blot: 20 µg of HeLa cell lysates stained with ARG20001 anti-Caspase 3 antibody [C33] at 2 µg/ml dilution.