

## ARG20305 anti-RFP + dsRed antibody

Package: 50 µg, 25 µg  
Store at: -20°C

### Summary

Product Description	Rabbit Polyclonal antibody recognizes RFP + dsRed
Tested Reactivity	Other
Tested Application	ICC/IF, IP, WB
Host	Rabbit
Clonality	Polyclonal
Isotype	IgG
Target Name	RFP + dsRed
Immunogen	Recombinant RFP expressed from E. coli
Conjugation	Un-conjugated
Alternate Names	Red Fluorescent Protein

### Application Instructions

Application table	Application	Dilution
	ICC/IF	Assay-dependent
	IP	10-20 µg/ml
	WB	0.5-4 µg/ml
Application Note	* The dilutions indicate recommended starting dilutions and the optimal dilutions or concentrations should be determined by the scientist.	

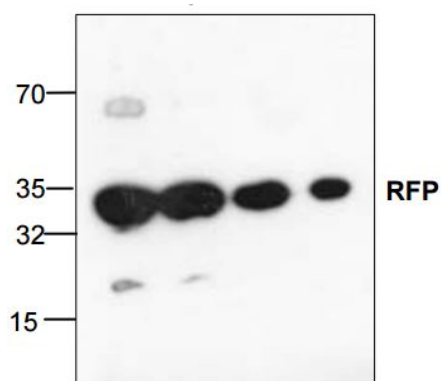
### Properties

Form	Liquid
Purification	Affinity Purified Antibody
Buffer	PBS (pH 7.2), 30% Glycerol, 0.5% BSA and 0.01% Thimerosal
Preservative	0.01% Thimerosal
Stabilizer	30% Glycerol, 0.5% BSA
Concentration	0.5 mg/ml
Storage instruction	For continuous use, store undiluted antibody at 2-8°C for up to a week. For long-term storage, aliquot and store at -20°C. Storage in frost free freezers is not recommended. Avoid repeated freeze/thaw cycles. Suggest spin the vial prior to opening. The antibody solution should be gently mixed before use.
Note	For laboratory research only, not for drug, diagnostic or other use.

## Bioinformation

Database links	<a href="#">GeneID: 3229046</a> <a href="#">Other</a>
Background	Since the molecular cloning of GFP cDNA and demonstration of GFP as a functional transgene, GFP has become a powerful tool with exciting applications in developmental, cell and molecular biology. RFP is the recent discovered protein that has the similar function and applications as GFP. Either GFP or RFP fluorescence is not species specific and can be expressed in bacteria, yeast, plant and mammalian cells. GFP or RFP can fuse with proteins of interest without interfering significantly with their assembly and function.
Highlight	Related Antibody Duos and Panels: <a href="#">ARG30061 Tag Internal Control Antibody Duo (dsRed, GAPDH)</a> Related products: <a href="#">RFP antibodies:</a> <a href="#">RFP ELISA Kits:</a> <a href="#">RFP Duos / Panels:</a> <a href="#">Anti-Rabbit IgG secondary antibodies:</a>
Research Area	Controls and Markers antibody; Tag Internal Control antibody; Fluorescent-Tags antibody
Calculated Mw	4 kDa

## Images



ARG20305 anti-RFP + dsRed antibody WB image

Western blot: 1. Recombinant RFP (1000 ng), 2. Recombinant RFP (250 ng), 3. Recombinant RFP (50 ng), and 4. Recombinant RFP (10 ng) stained with ARG20305 anti-RFP + dsRed antibody.