

ARG20340 anti-CXCL10 / IP10 antibody

Package: 50 µg
Store at: -20°C

Summary

Product Description	Rabbit Polyclonal antibody recognizes CXCL10 / IP10
Tested Reactivity	Rat
Tested Application	WB
Host	Rabbit
Clonality	Polyclonal
Isotype	IgG
Target Name	CXCL10 / IP10
Species	Rat
Immunogen	E. coli-expressed recombinant rat IP-10
Conjugation	Un-conjugated
Alternate Names	gIP-10; INP10; 10 kDa interferon gamma-induced protein; IP-10; C-X-C motif chemokine 10; 1-73; Small-inducible cytokine B10; IFI10; Gamma-IP10; SCYB10; crg-2; C7; mob-1

Application Instructions

Application table	Application	Dilution
	WB	0.5-2 µg/ml
Application Note	* The dilutions indicate recommended starting dilutions and the optimal dilutions or concentrations should be determined by the scientist.	

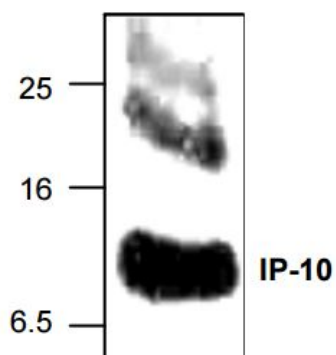
Properties

Form	Liquid
Purification	Affinity Purified Antibody
Buffer	PBS (pH 7.2), 50% Glycerol, 1% BSA and 0.02% Thimerosal
Preservative	0.02% Thimerosal
Stabilizer	50% Glycerol, 1% BSA
Concentration	0.5 mg/ml
Storage instruction	For continuous use, store undiluted antibody at 2-8°C for up to a week. For long-term storage, aliquot and store at -20°C. Storage in frost free freezers is not recommended. Avoid repeated freeze/thaw cycles. Suggest spin the vial prior to opening. The antibody solution should be gently mixed before use.
Note	For laboratory research only, not for drug, diagnostic or other use.

Bioinformation

Database links	GeneID: 245920 Rat Swiss-port # P48973 Rat
Background	<p>IP-10 (interferon-gamma induced protein 10 kDa; in mouse also called cytokine responsive gene 2, Crg-2, or mob-1) is a highly inducible, primary response gene that belongs to the CXC chemokine superfamily. It was first cloned in 1985. Like Mig, IP-10 has no activity on neutrophils. Its functions include stimulation of monocytes, natural killer and T-cell migration, regulation of T-cell and bone marrow progenitor maturation, modulation of adhesion molecule expression as well as inhibition of angiogenesis. Mig and IP-10 share the same receptor, CXCR3.</p>
Highlight	<p>Related products: CXCL10 antibodies; CXCL10 ELISA Kits; CXCL10 recombinant proteins; Anti-Rabbit IgG secondary antibodies; Related news: circNDUFB2, a circular RNA (circRNA), activates anti-tumor immunity</p>
Research Area	Cancer antibody; Immune System antibody
Calculated Mw	11 kDa
PTM	CXCL10(1-73) is produced by proteolytic cleavage after secretion from keratinocytes.

Images



ARG20340 anti-IP-10 antibody WB image

Western Blot: EAE rat brain stained with anti-IP-10 antibody (ARG20340).