

ARG20534 anti-Cpn 10 antibody

Package: 50 µg
Store at: -20°C

Summary

Product Description	Rabbit Polyclonal antibody recognizes Cpn 10
Tested Reactivity	Hu, Ms, Rat, Bov, Dog, Gpig, Pig, Rb, Sheep, Xenopus laevis
Tested Application	ELISA, ICC/IF, IHC-P, IP, WB
Host	Rabbit
Clonality	Polyclonal
Target Name	Cpn 10
Species	Human
Immunogen	Synthetic peptide around aa. 91-101 of Human Cpn10.
Conjugation	Un-conjugated
Alternate Names	HSP10; 10 kDa chaperonin; CPN10; Early-pregnancy factor; Hsp10; GROES; EPF; Chaperonin 10; 10 kDa heat shock protein, mitochondrial

Application Instructions

Application table	Application	Dilution
	ELISA	Assay-dependent
	ICC/IF	Assay-dependent
	IHC-P	Assay-dependent
	IP	Assay-dependent
	WB	1:1000
	* The dilutions indicate recommended starting dilutions and the optimal dilutions or concentrations should be determined by the scientist.	

Properties

Form	Liquid
Purification	Purification with Protein A.
Buffer	PBS (pH 7.3) and 0.02% Sodium azide
Preservative	0.02% Sodium azide
Concentration	1 mg/ml
Storage instruction	For continuous use, store undiluted antibody at 2-8°C for up to a week. For long-term storage, aliquot and store at -20°C or below. Storage in frost free freezers is not recommended. Avoid repeated freeze/thaw cycles. Suggest spin the vial prior to opening. The antibody solution should be gently mixed before use.

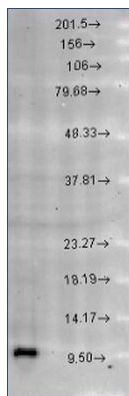
Note

For laboratory research only, not for drug, diagnostic or other use.

Bioinformation

Gene Symbol	HSPE1
Gene Full Name	heat shock 10kDa protein 1
Background	Chaperonin 10, otherwise known as Cpn10, (groES in E.coli) make up a family of small heart shock proteins with an approximate molecular mass of 10kDa (Hsp10s). Cpn10 acts as a co-chaperone and interacts with the Hsp60 family to promote proper folding of polypeptides. Cpn10 and Cpn60 both exhibit sevenfold axis of symmetry and function as a team in the protein folding and assembly process. Cpn10 has been located in human platelets, but is also present in human maternal serum. It has been reported that human Cpn10 is identical with early pregnancy factor, which is involved in control over cell growth and development. This identification suggest that Cpn10 may act like a hormone in stressful situations such as pregnancy.
Function	Eukaryotic CPN10 homolog which is essential for mitochondrial protein biogenesis, together with CPN60. Binds to CPN60 in the presence of Mg-ATP and suppresses the ATPase activity of the latter. [UniProt]
Research Area	Metabolism antibody; Signaling Transduction antibody
Calculated Mw	11 kDa
Cellular Localization	Mitochondrion Matrix

Images



ARG20534 anti-Cpn 10 antibody WB image

Western blot: Rat brain extract stained with ARG20534 anti-Cpn 10 antibody at 1:1000 dilution.