

ARG20585 Goat anti-Mouse IgG antibody (PE), pre-adsorbed

Package: 500 µl

Store at: 4°C

Summary

Product Description	PE-conjugated Goat Polyclonal antibody recognizes Mouse IgG
Tested Reactivity	Ms
Species Does Not React With	Hu
Tested Application	FACS, FLISA
Specificity	The antibody reacts with the heavy chains of Mouse IgG1, IgG2a, IgG2b, IgG2c, and IgG3. The antibody is pre-adsorbed with Mouse IgM, Mouse IgA, Human immunoglobulins and pooled sera, so the antibody may not react with Mouse IgM, Mouse IgA and Human immunoglobulins, but may react with immunoglobulins from other species.
Host	Goat
Clonality	Polyclonal
Isotype	IgG
Target Name	IgG
Antigen Species	Mouse
Immunogen	Mouse IgG paraproteins
Target Ig	IgG1, IgG2a, IgG2b, and IgG3
Conjugation	PE

Application Instructions

Pre Adsorbed	Mouse IgM, Mouse IgA, Human immunoglobulins and pooled sera.						
Application table	<table><thead><tr><th>Application</th><th>Dilution</th></tr></thead><tbody><tr><td>FACS</td><td>< 0.1 µg / 10⁶ cells</td></tr><tr><td>FLISA</td><td>Assay-dependent</td></tr></tbody></table>	Application	Dilution	FACS	< 0.1 µg / 10 ⁶ cells	FLISA	Assay-dependent
Application	Dilution						
FACS	< 0.1 µg / 10 ⁶ cells						
FLISA	Assay-dependent						
Application Note	* The dilutions indicate recommended starting dilutions and the optimal dilutions or concentrations should be determined by the scientist.						

Properties

Form	Liquid
Purification	Affinity purification with immunogen.
Buffer	PBS, 0.1% Sodium azide and Sucrose.
Preservative	0.1% Sodium azide
Stabilizer	Sucrose
Concentration	0.5 mg/ml

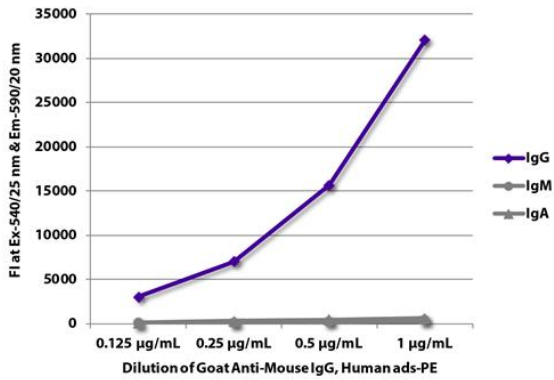
Storage instruction

Aliquot and store in the dark at 2-8°C. Keep protected from prolonged exposure to light. Avoid repeated freeze/thaw cycles. Suggest spin the vial prior to opening. The antibody solution should be gently mixed before use.

Note

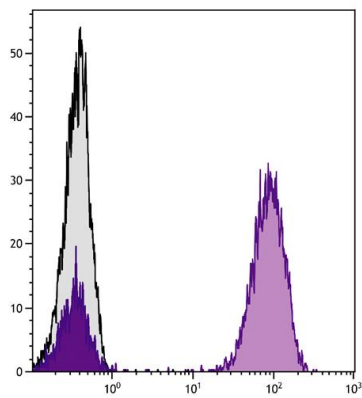
For laboratory research only, not for drug, diagnostic or other use.

Images



ARG20585 Goat anti-Mouse IgG antibody (PE) (pre-adsorbed) FLISA image

FLISA: The plate was coated with purified Mouse IgG, IgM and IgA. Immunoglobulins were detected with serially diluted ARG20585 Goat anti-Mouse IgG antibody (PE) (pre-adsorbed).



ARG20585 Goat anti-Mouse IgG antibody (PE) (pre-adsorbed) FACS image

Flow Cytometry: Human peripheral blood lymphocytes stained with Mouse anti-Human CD3 antibody followed by ARG20585 Goat anti-Mouse IgG antibody (PE) (pre-adsorbed).