

ARG20675 Rabbit IgG Isotype Control antibody (FITC)

Package: 50 tests
Store at: 4°C

Summary

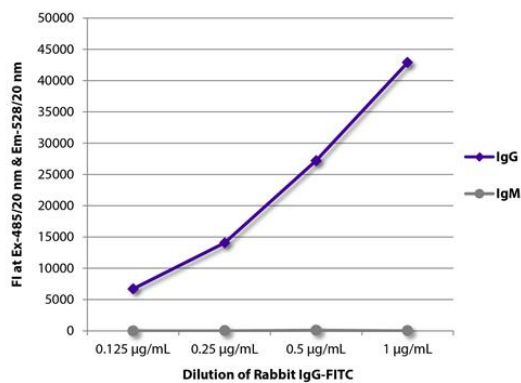
Product Description	FITC-conjugated Rabbit Polyclonal antibody as a negative control antibody for Rabbit IgG
Tested Application	BL, FACS, FLISA, ICC/IF, IHC-Fr, IHC-P
Host	Rabbit
Clonality	Polyclonal
Isotype	IgG
Target Name	Rabbit IgG
Conjugation	FITC

Application Instructions

Application table	Application	Dilution
	BL	Assay-dependent
	FACS	10 µl/10 ⁶ cells
	FLISA	Assay-dependent
	ICC/IF	Assay-dependent
	IHC-Fr	Assay-dependent
	IHC-P	Assay-dependent
	* The dilutions indicate recommended starting dilutions and the optimal dilutions or concentrations should be determined by the scientist.	

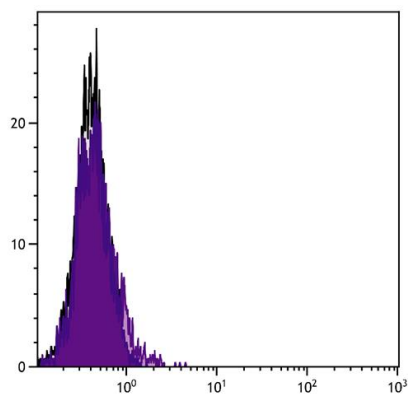
Properties

Form	Liquid
Buffer	PBS and 0.1% Sodium azide.
Preservative	0.1% Sodium azide
Storage instruction	Aliquot and store in the dark at 2-8°C. Keep protected from prolonged exposure to light. Avoid repeated freeze/thaw cycles. Suggest spin the vial prior to opening. The antibody solution should be gently mixed before use.
Note	For laboratory research only, not for drug, diagnostic or other use.



ARG20675 Rabbit IgG Isotype Control antibody (FITC) FLISA image

FLISA: The plate was coated with [ARG21514](#) Goat anti-Rabbit IgG antibody (pre-adsorbed) and [ARG21717](#) Goat anti-Rabbit IgM antibody (pre-adsorbed). Serially diluted ARG20675 Rabbit IgG Isotype Control antibody (FITC) was captured and fluorescence intensity quantified.



ARG20675 Rabbit IgG Isotype Control antibody (FITC) FACS image

Flow Cytometry: Human peripheral blood lymphocytes stained with ARG20675 Rabbit IgG Isotype Control antibody (FITC).