

ARG20714 Rat IgG2b Isotype Control antibody [KLH/G2b-1-2] (AP)

Package: 500 µl
Store at: 4°C

Summary

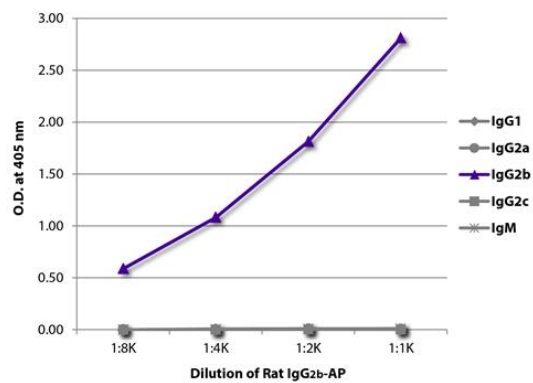
Product Description	AP-conjugated Rat Monoclonal antibody [KLH/G2b-1-2] as a negative control antibody for Rat IgG2b
Tested Application	ELISA, FACS, FLISA, IHC-Fr, IHC-P
Specificity	KLH
Host	Rat
Clonality	Monoclonal
Clone	KLH/G2b-1-2
Isotype	IgG2b, kappa
Target Name	Rat IgG2b
Conjugation	AP

Application Instructions

Application table	Application	Dilution
	ELISA	1:2000 - 1:4000
	FACS	Assay-dependent
	FLISA	Assay-dependent
	IHC-Fr	Assay-dependent
	IHC-P	Assay-dependent
Application Note	* The dilutions indicate recommended starting dilutions and the optimal dilutions or concentrations should be determined by the scientist.	

Properties

Form	Liquid
Buffer	50 mM Tris (pH 8.0), 0.1% Sodium azide, 1 mM MgCl ₂ and 50% Glycerol
Preservative	0.1% Sodium azide
Stabilizer	50% Glycerol
Storage instruction	Aliquot and store in the dark at 2-8°C. Keep protected from prolonged exposure to light. Avoid repeated freeze/thaw cycles. Suggest spin the vial prior to opening. The antibody solution should be gently mixed before use.
Note	For laboratory research only, not for drug, diagnostic or other use.



ARG20714 Rat IgG2b Isotype Control antibody [KLH/G2b-1-2] (AP)
ELISA image

ELISA: The plate was coated with [ARG21694](#) Mouse anti-Rat IgG1 antibody [G17E7], [ARG21699](#) Mouse anti-Rat IgG2a antibody [2A8F4], [ARG21705](#) Mouse anti-Rat IgG2b antibody [2B10A8], [ARG21711](#) Mouse anti-Rat IgG2c antibody [2C8F1], and [ARG23828](#) Mouse anti-Rat IgM antibody [M2A1]. Serially diluted ARG20714 Rat IgG2b Isotype Control antibody [KLH/G2b-1-2] (AP) was captured and quantified.